

Product datasheet for **TA807331AM**

PISD Mouse Monoclonal Antibody (Biotin conjugated) [Clone ID: OTI2H1]

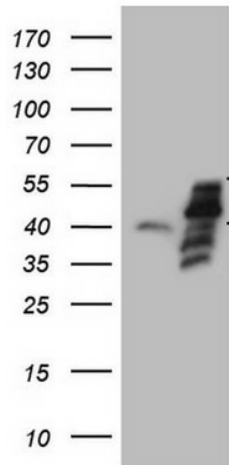
Product data:

Product Type:	Primary Antibodies
Clone Name:	OTI2H1
Applications:	WB
Recommended Dilution:	WB 1:200~2000
Reactivity:	Human, Mouse, Rat
Host:	Mouse
Isotype:	IgG2a
Clonality:	Monoclonal
Immunogen:	Human recombinant protein fragment corresponding to amino acids 80-340 of human PISD(NP_055153) produced in E.coli.
Formulation:	PBS (pH 7.3) containing 1% BSA, 50% glycerol and 0.02% sodium azide.
Concentration:	0.5 mg/ml
Purification:	Purified from mouse ascites fluids or tissue culture supernatant by affinity chromatography (protein A/G)
Conjugation:	Biotin
Storage:	Store at -20°C as received.
Stability:	Stable for 12 months from date of receipt.
Gene Name:	phosphatidylserine decarboxylase
Database Link:	NP_055153 Entrez Gene 320951 MouseEntrez Gene 681361 RatEntrez Gene 23761 Human Q9UG56
Synonyms:	DJ858B16; dj858B16.2; PSD; PSDC; PSSC
Protein Pathways:	Glycerophospholipid metabolism, Metabolic pathways

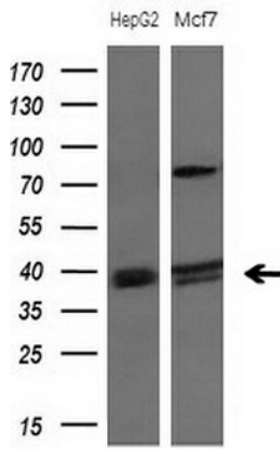


[View online »](#)

Product images:



HEK293T cells were transfected with the pCMV6-ENTRY control (Left lane) or pCMV6-ENTRY PISD ([RC200269], Right lane) cDNA for 48 hrs and lysed. Equivalent amounts of cell lysates (5 ug per lane) were separated by SDS-PAGE and immunoblotted with anti-PISD.



Western blot analysis of extracts (10ug) from 2 different cell lines by using anti-PISD monoclonal antibody at 1:200 dilution.