

## Product datasheet for TA807328M

### MALT1 Mouse Monoclonal Antibody [Clone ID: OTI3E10]

#### Product data:

Product Type:	Primary Antibodies
Clone Name:	OTI3E10
Applications:	IHC
Recommended Dilution:	IHC 1:150
Reactivity:	Human, Mouse, Rat
Host:	Mouse
Isotype:	IgG1
Clonality:	Monoclonal
Immunogen:	Full length human recombinant protein of human MALT1 (NP_006776) produced in HEK293T cell.
Formulation:	PBS (pH 7.3) containing 1% BSA, 50% glycerol and 0.02% sodium azide.
Concentration:	1 mg/ml
Purification:	Purified from mouse ascites fluids or tissue culture supernatant by affinity chromatography (protein A/G)
Conjugation:	Unconjugated
Storage:	Store at -20°C as received.
Stability:	Stable for 12 months from date of receipt.
Predicted Protein Size:	92.1 kDa
Gene Name:	MALT1 paracaspase
Database Link:	<a href="#">NP_006776</a> <a href="#">Entrez Gene 240354 Mouse</a> <a href="#">Entrez Gene 307366 Rat</a> <a href="#">Entrez Gene 10892 Human</a> <a href="#">Q9UDY8</a>
Background:	This gene has been found to be recurrently rearranged in chromosomal translocation with two other genes - baculoviral IAP repeat-containing protein 3 (also known as apoptosis inhibitor 2) and immunoglobulin heavy chain locus - in mucosa-associated lymphoid tissue lymphomas. The protein encoded by this gene may play a role in NF-kappaB activation. Two alternatively spliced transcript variants encoding different isoforms have been described for this gene. [provided by RefSeq, Jul 2008]

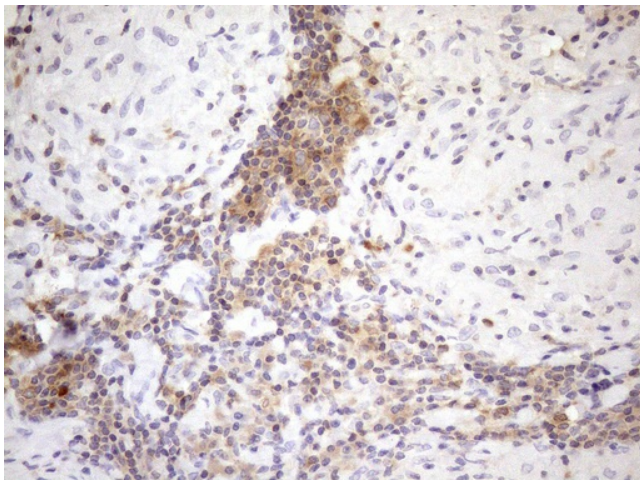

[View online »](#)

**Synonyms:** IMD12; MLT; MLT1

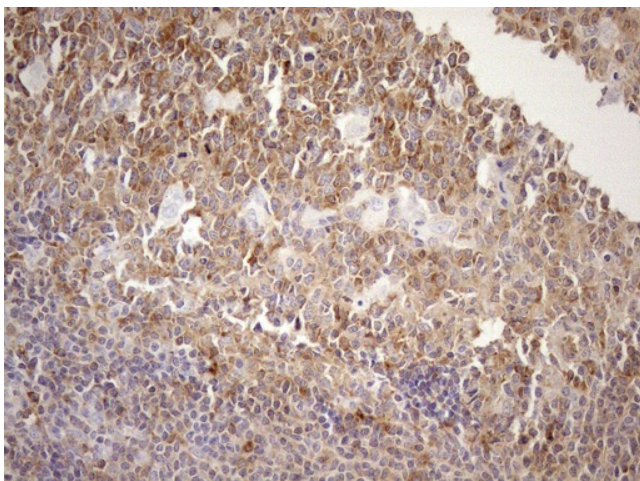
**Protein Families:** Druggable Genome, Protease

**Protein Pathways:** B cell receptor signaling pathway, T cell receptor signaling pathway

**Product images:**



Immunohistochemical staining of paraffin-embedded Human lymph node tissue within the normal limits using anti-MALT1 mouse monoclonal antibody. Heat-induced epitope retrieval by EDTA solution buffer pH 8.0 at 120°C for 3 min.



Immunohistochemical staining of paraffin-embedded Human tonsil within the normal limits using anti-MALT1 mouse monoclonal antibody. Heat-induced epitope retrieval by EDTA solution buffer pH 8.0 at 120°C for 3 min.