

Product datasheet for **TA807322BM**

MALT1 Mouse Monoclonal Antibody (HRP conjugated) [Clone ID: OTI6D2]

Product data:

Product Type:	Primary Antibodies
Clone Name:	OTI6D2
Applications:	WB
Recommended Dilution:	WB 1:2000
Reactivity:	Human, Mouse, Rat
Host:	Mouse
Isotype:	IgG1
Clonality:	Monoclonal
Immunogen:	Full length human recombinant protein of human MALT1 (NP_006776) produced in HEK293T cell.
Formulation:	PBS (pH 7.3) containing 1% BSA, 50% glycerol.
Concentration:	0.5 mg/ml
Purification:	Purified from mouse ascites fluids or tissue culture supernatant by affinity chromatography (protein A/G)
Conjugation:	HRP
Storage:	Store at -20°C as received.
Stability:	Stable for 12 months from date of receipt.
Predicted Protein Size:	92.1 kDa
Gene Name:	MALT1 paracaspase
Database Link:	NP_006776 Entrez Gene 240354 Mouse Entrez Gene 307366 Rat Entrez Gene 10892 Human Q9UDY8
Background:	This gene has been found to be recurrently rearranged in chromosomal translocation with two other genes - baculoviral IAP repeat-containing protein 3 (also known as apoptosis inhibitor 2) and immunoglobulin heavy chain locus - in mucosa-associated lymphoid tissue lymphomas. The protein encoded by this gene may play a role in NF-kappaB activation. Two alternatively spliced transcript variants encoding different isoforms have been described for this gene. [provided by RefSeq, Jul 2008]

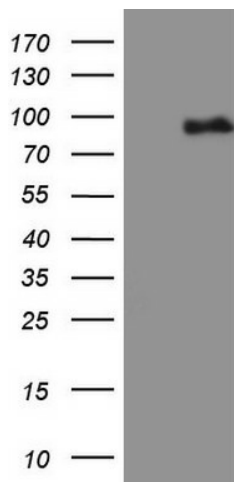


[View online »](#)

Synonyms: IMD12; MLT; MLT1

Protein Families: Druggable Genome, Protease

Protein Pathways: B cell receptor signaling pathway, T cell receptor signaling pathway

Product images:

HEK293T cells were transfected with the pCMV6-ENTRY control (Left lane) or pCMV6-ENTRY MALT1 ([RC214639], Right lane) cDNA for 48 hrs and lysed. Equivalent amounts of cell lysates (5 ug per lane) were separated by SDS-PAGE and immunoblotted with anti-MALT1 (1:2000). Positive lysates [LY402030] (100ug) and [LC402030] (20ug) can be purchased separately from OriGene.