

Product datasheet for **TA807288BM**

Carboxypeptidase M (CPM) Mouse Monoclonal Antibody (HRP conjugated) [Clone ID: OTI2D11]

Product data:

Product Type:	Primary Antibodies
Clone Name:	OTI2D11
Applications:	IHC, WB
Recommended Dilution:	WB 1:2000, IHC 1:150
Reactivity:	Human, Mouse, Rat
Host:	Mouse
Isotype:	IgG2b
Clonality:	Monoclonal
Immunogen:	Human recombinant protein fragment corresponding to amino acids 124-423 of human CPM(NP_001865) produced in E.coli.
Formulation:	PBS (pH 7.3) containing 1% BSA, 50% glycerol.
Concentration:	0.5 mg/ml
Purification:	Purified from mouse ascites fluids or tissue culture supernatant by affinity chromatography (protein A/G)
Conjugation:	HRP
Storage:	Store at -20°C as received.
Stability:	Stable for 12 months from date of receipt.
Predicted Protein Size:	48.6 kDa
Gene Name:	carboxypeptidase M
Database Link:	NP_001865 Entrez Gene 70574 Mouse Entrez Gene 314855 Rat Entrez Gene 1368 Human P14384



[View online »](#)

Background:

The protein encoded by this gene is a membrane-bound arginine/lysine carboxypeptidase. Its expression is associated with monocyte to macrophage differentiation. This encoded protein contains hydrophobic regions at the amino and carboxy termini and has 6 potential asparagine-linked glycosylation sites. The active site residues of carboxypeptidases A and B are conserved in this protein. Three alternatively spliced transcript variants encoding the same protein have been described for this gene. [provided by RefSeq, Jul 2008]

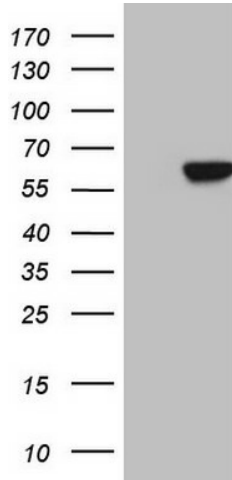
Synonyms:

carboxypeptidase M

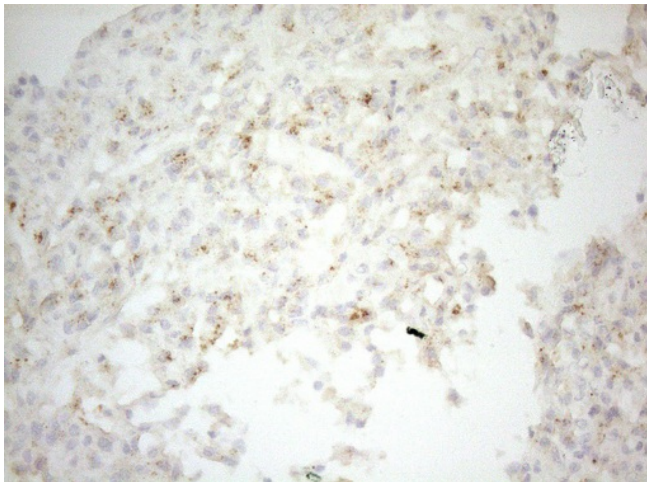
Protein Families:

Druggable Genome, Protease

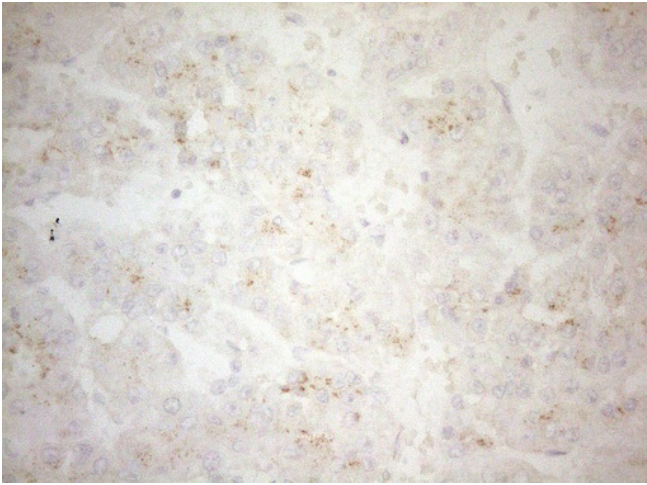
Product images:



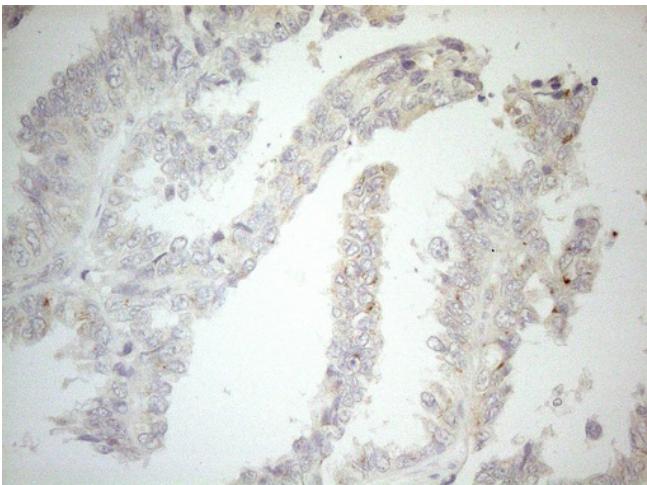
HEK293T cells were transfected with the pCMV6-ENTRY control (Left lane) or pCMV6-ENTRY CPM ([RC224582], Right lane) cDNA for 48 hrs and lysed. Equivalent amounts of cell lysates (5 ug per lane) were separated by SDS-PAGE and immunoblotted with anti-CPM (1:2000). Positive lysates [LY400704] (100ug) and [LC400704] (20ug) can be purchased separately from OriGene.



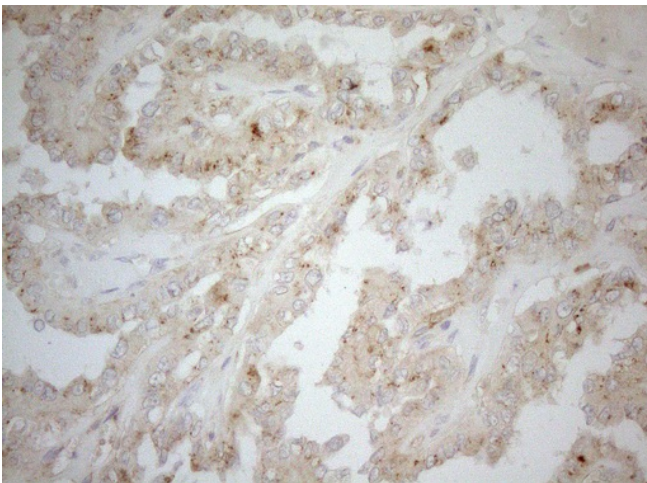
Immunohistochemical staining of paraffin-embedded Human liver tissue within the normal limits using anti-CPM mouse monoclonal antibody. (Heat-induced epitope retrieval by 1mM EDTA in 10mM Tris buffer (pH8.5) at 120°C for 3min, [TA807288]) (1:150)



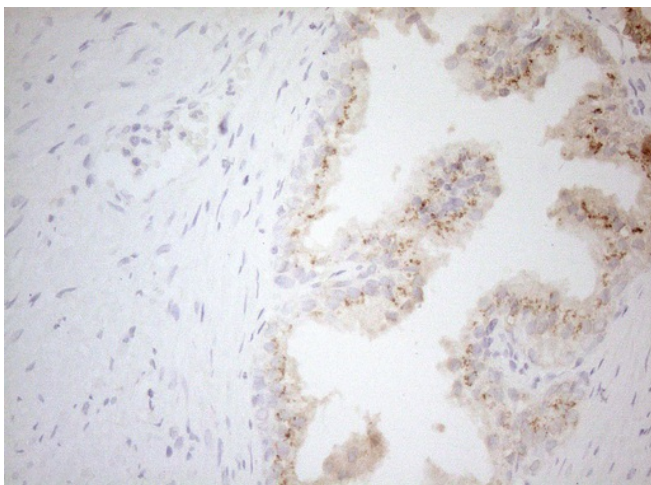
Immunohistochemical staining of paraffin-embedded Carcinoma of Human liver tissue using anti-CPM mouse monoclonal antibody. (Heat-induced epitope retrieval by 1mM EDTA in 10mM Tris buffer (pH8.5) at 120°C for 3min, [TA807288]) (1:150)



Immunohistochemical staining of paraffin-embedded Adenocarcinoma of Human ovary tissue using anti-CPM mouse monoclonal antibody. (Heat-induced epitope retrieval by 1mM EDTA in 10mM Tris buffer (pH8.5) at 120°C for 3min, [TA807288]) (1:150)



Immunohistochemical staining of paraffin-embedded Carcinoma of Human thyroid tissue using anti-CPM mouse monoclonal antibody. (Heat-induced epitope retrieval by 1mM EDTA in 10mM Tris buffer (pH8.5) at 120°C for 3min, [TA807288]) (1:150)



Immunohistochemical staining of paraffin-embedded Human prostate tissue within the normal limits using anti-CPM mouse monoclonal antibody. (Heat-induced epitope retrieval by 1mM EDTA in 10mM Tris buffer (pH8.5) at 120°C for 3min, [TA807288]) (1:150)