

Product datasheet for **TA807282AM**

FBLIM1 Mouse Monoclonal Antibody (Biotin conjugated) [Clone ID: OTI3G1]

Product data:

Product Type:	Primary Antibodies
Clone Name:	OTI3G1
Applications:	WB
Recommended Dilution:	WB 1:2000
Reactivity:	Human
Host:	Mouse
Isotype:	IgG1
Clonality:	Monoclonal
Immunogen:	Human recombinant protein fragment corresponding to amino acids 1-242 of human FBLIM1(NP_060026) produced in E.coli.
Formulation:	PBS (pH 7.3) containing 1% BSA, 50% glycerol and 0.02% sodium azide.
Concentration:	0.5 mg/ml
Purification:	Purified from mouse ascites fluids or tissue culture supernatant by affinity chromatography (protein A/G)
Conjugation:	Biotin
Storage:	Store at -20°C as received.
Stability:	Stable for 12 months from date of receipt.
Predicted Protein Size:	40.5 kDa
Gene Name:	filamin binding LIM protein 1
Database Link:	NP_060026 Entrez Gene 54751 Human Q8WUP2



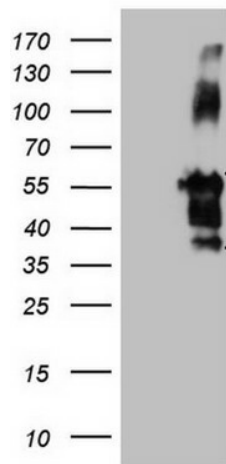
[View online »](#)

Background:

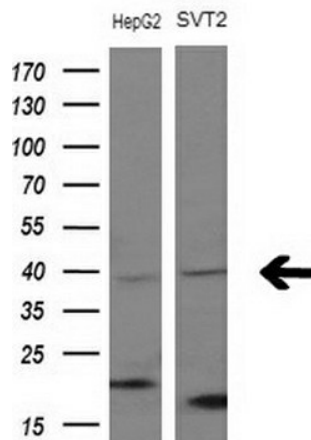
This gene encodes a protein with an N-terminal filamin-binding domain, a central proline-rich domain, and, multiple C-terminal LIM domains. This protein localizes at cell junctions and may link cell adhesion structures to the actin cytoskeleton. This protein may be involved in the assembly and stabilization of actin-filaments and likely plays a role in modulating cell adhesion, cell morphology and cell motility. This protein also localizes to the nucleus and may affect cardiomyocyte differentiation after binding with the CSX/NKX2-5 transcription factor. Alternative splicing results in multiple transcript variants encoding different isoforms. [provided by RefSeq, Jul

Synonyms:

CAL; FBLP-1; FBLP1

Product images:


HEK293T cells were transfected with the pCMV6-ENTRY control (Cat# [PS100001], Left lane) or pCMV6-ENTRY FBLIM1 (Cat# [RC205764], Right lane) cDNA for 48 hrs and lysed. Equivalent amounts of cell lysates (5 ug per lane) were separated by SDS-PAGE and immunoblotted with anti-FBLIM1 (Cat# [TA807282]). Positive lysates [LY402597] (100ug) and [LC402597] (20ug) can be purchased separately from OriGene.



Western blot analysis of extracts (10ug) from 2 different cell lines by using anti-FBLIM1 monoclonal antibody at 1:200 dilution.