

Product datasheet for **TA807265AM**

HIPK1 Mouse Monoclonal Antibody (Biotin conjugated) [Clone ID: OTI5F1]

Product data:

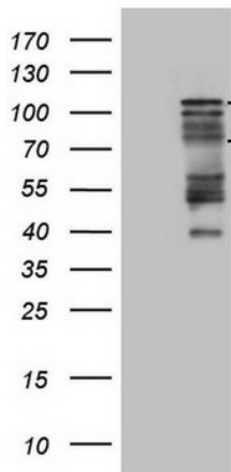
Product Type:	Primary Antibodies
Clone Name:	OTI5F1
Applications:	IHC, WB
Recommended Dilution:	WB 1:2000, IHC 1:150
Reactivity:	Human, Mouse, Rat
Host:	Mouse
Isotype:	IgG1
Clonality:	Monoclonal
Immunogen:	Human recombinant protein fragment corresponding to amino acids 439-697 of human HIPK1(NP_852003) produced in E.coli.
Formulation:	PBS (pH 7.3) containing 1% BSA, 50% glycerol and 0.02% sodium azide.
Concentration:	0.5 mg/ml
Purification:	Purified from mouse ascites fluids or tissue culture supernatant by affinity chromatography (protein A/G)
Conjugation:	Biotin
Storage:	Store at -20°C as received.
Stability:	Stable for 12 months from date of receipt.
Predicted Protein Size:	87.1 kDa
Gene Name:	homeodomain interacting protein kinase 1
Database Link:	NP_852003 Entrez Gene 15257 Mouse Entrez Gene 365895 Rat Entrez Gene 204851 Human Q86Z02
Background:	The protein encoded by this gene belongs to the Ser/Thr family of protein kinases and HIPK subfamily. It phosphorylates homeodomain transcription factors and may also function as a co-repressor for homeodomain transcription factors. Alternative splicing results in four transcript variants encoding four distinct isoforms. [provided by RefSeq, Jul 2008]
Synonyms:	Myak; Nbak2



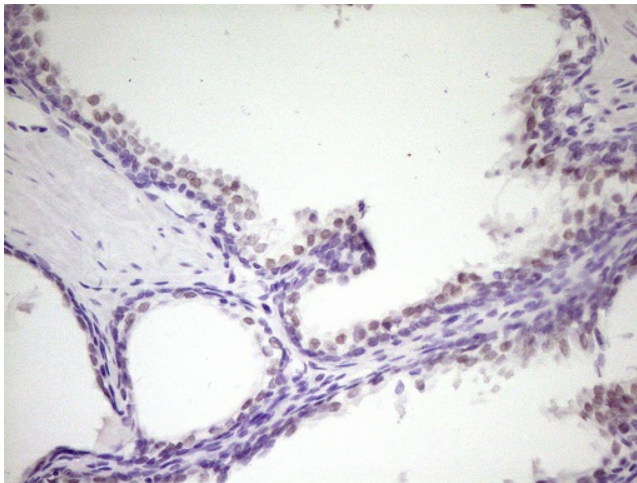
[View online »](#)

Protein Families: Druggable Genome, Protein Kinase, Transcription Factors

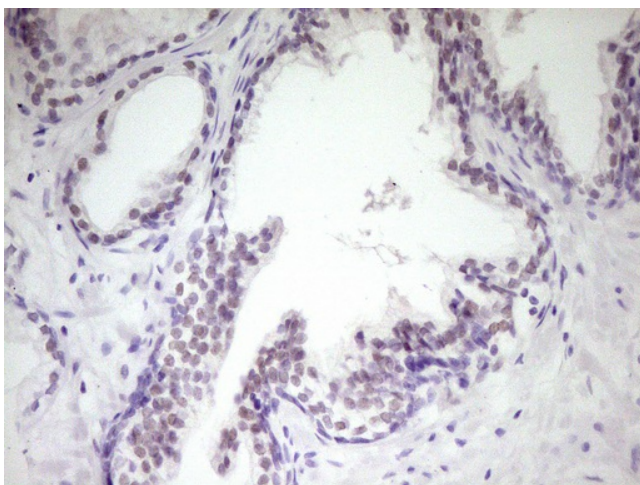
Product images:



HEK293T cells were transfected with the pCMV6-ENTRY control (Cat# [PS100001], Left lane) or pCMV6-ENTRY HIPK1 (Cat# [RC206176], Right lane) cDNA for 48 hrs and lysed. Equivalent amounts of cell lysates (5 ug per lane) were separated by SDS-PAGE and immunoblotted with anti-HIPK1(Cat# [TA807265]). Positive lysates [LY405750] (100ug) and [LC405750] (20ug) can be purchased separately from OriGene.



Immunohistochemical staining of paraffin-embedded Human prostate tissue within the normal limits using anti-HIPK1 mouse monoclonal antibody. (Heat-induced epitope retrieval by 1mM EDTA in 10mM Tris, pH8.5, 120°C for 3min, [TA807265])



Immunohistochemical staining of paraffin-embedded Carcinoma of Human prostate tissue using anti-HIPK1 mouse monoclonal antibody. (Heat-induced epitope retrieval by 1mM EDTA in 10mM Tris, pH8.5, 120°C for 3min, [TA807265])