

## Product datasheet for **TA807229S**

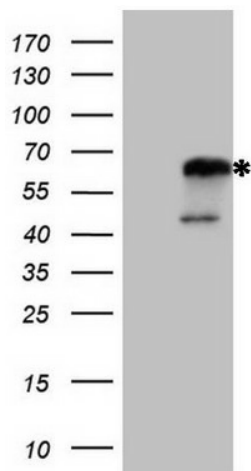
### NR2C2 Mouse Monoclonal Antibody [Clone ID: OTI1F3]

#### Product data:

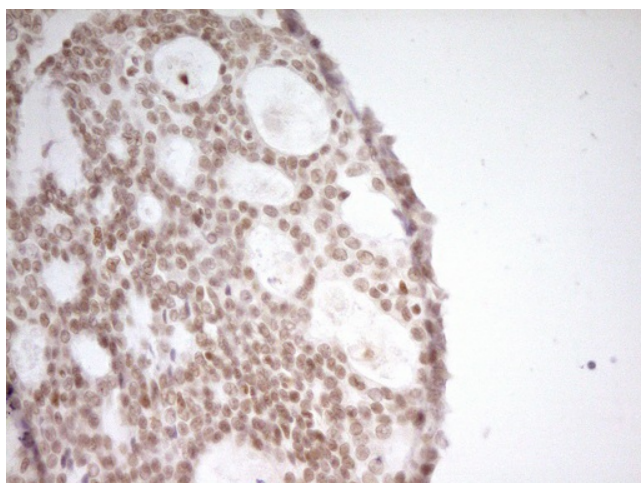
Product Type:	Primary Antibodies
Clone Name:	OTI1F3
Applications:	IHC, WB
Recommended Dilution:	IHC 1:250
Reactivity:	Human, Mouse, Rat
Host:	Mouse
Isotype:	IgG2a
Clonality:	Monoclonal
Immunogen:	Human recombinant protein fragment corresponding to amino acids 1-241 of human NR2C2(NP_003289) produced in E.coli.
Formulation:	PBS (pH 7.3) containing 1% BSA, 50% glycerol and 0.02% sodium azide.
Concentration:	1 mg/ml
Purification:	Purified from mouse ascites fluids or tissue culture supernatant by affinity chromatography (protein A/G)
Conjugation:	Unconjugated
Storage:	Store at -20°C as received.
Stability:	Stable for 12 months from date of receipt.
Predicted Protein Size:	67.2 kDa
Gene Name:	nuclear receptor subfamily 2 group C member 2
Database Link:	<a href="#">NP_003289</a> <a href="#">Entrez Gene 22026 Mouse</a> <a href="#">Entrez Gene 50659 Rat</a> <a href="#">Entrez Gene 7182 Human</a> <a href="#">P49116</a>
Synonyms:	TAK1; TR4
Protein Families:	Druggable Genome, Nuclear Hormone Receptor, Transcription Factors



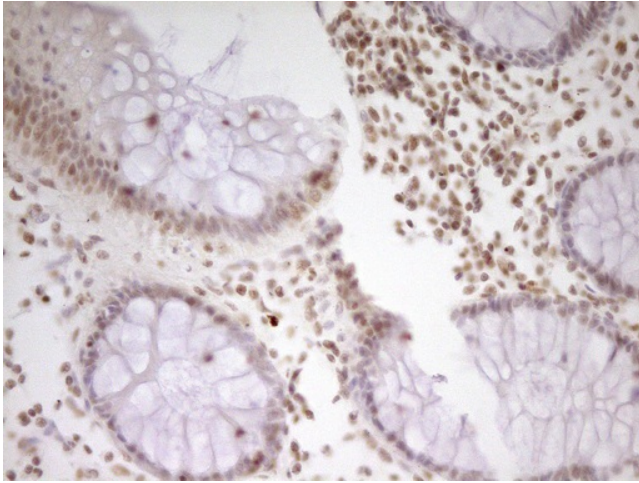
[View online »](#)

**Product images:**

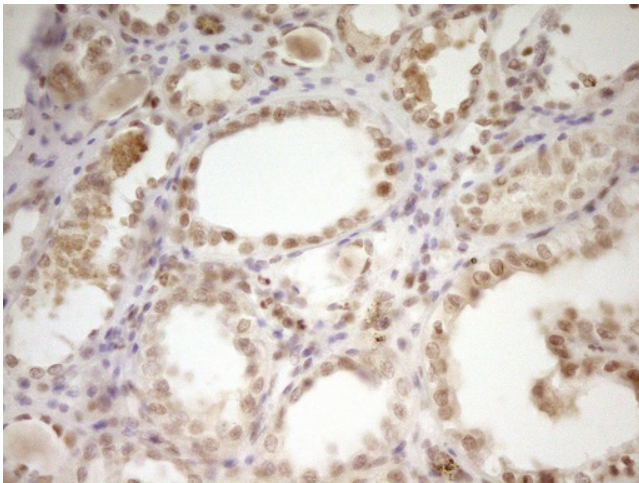
HEK293T cells were transfected with the pCMV6-ENTRY control (Left lane) or pCMV6-ENTRY NR2C2 ([RC219184], Right lane) cDNA for 48 hrs and lysed. Equivalent amounts of cell lysates (5 ug per lane) were separated by SDS-PAGE and immunoblotted with anti-NR2C2. Positive lysates [LY401137] (100ug) and [LC401137] (20ug) can be purchased separately from OriGene.



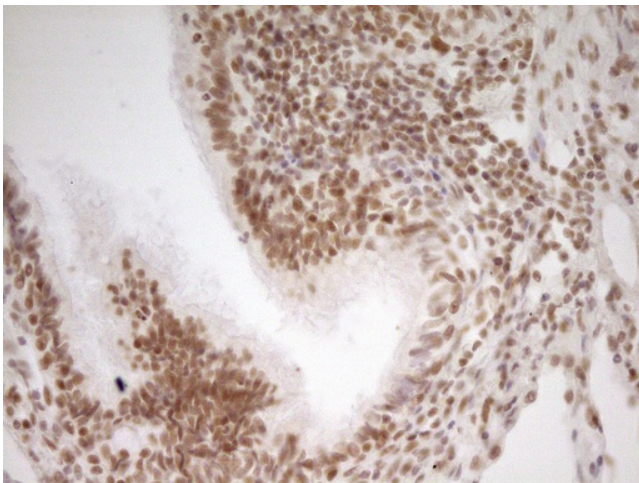
Immunohistochemical staining of paraffin-embedded Adenocarcinoma of Human breast tissue using anti-NR2C2 mouse monoclonal antibody. (Heat-induced epitope retrieval by 1mM EDTA in 10mM Tris, pH8.5, 120°C for 3min, [TA807229])



Immunohistochemical staining of paraffin-embedded Human colon tissue within the normal limits using anti-NR2C2 mouse monoclonal antibody. (Heat-induced epitope retrieval by 1mM EDTA in 10mM Tris, pH8.5, 120°C for 3min, [TA807229])

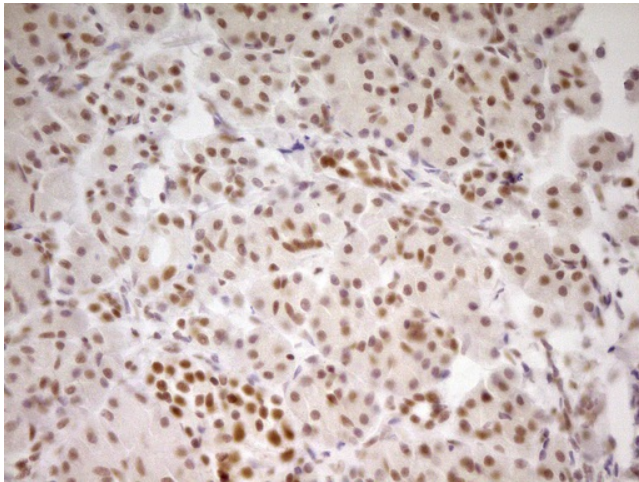


Immunohistochemical staining of paraffin-embedded Human Kidney tissue within the normal limits using anti-NR2C2 mouse monoclonal antibody. (Heat-induced epitope retrieval by 1mM EDTA in 10mM Tris, pH8.5, 120°C for 3min, [TA807229])

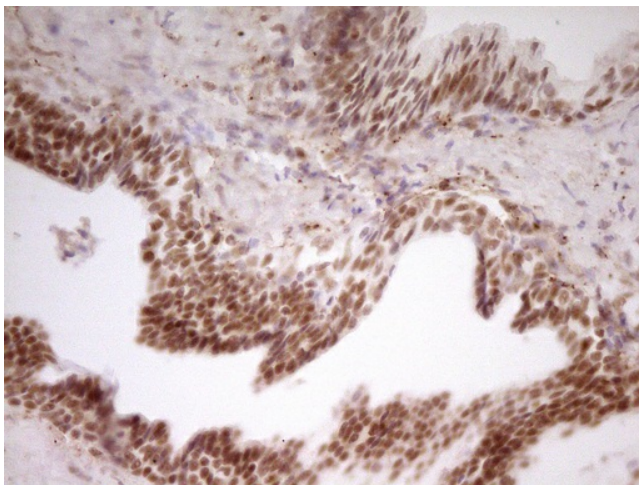


Immunohistochemical staining of paraffin-embedded Human lung tissue within the normal limits using anti-NR2C2 mouse monoclonal antibody. (Heat-induced epitope retrieval by 1mM EDTA in 10mM Tris, pH8.5, 120°C for 3min, [TA807229])

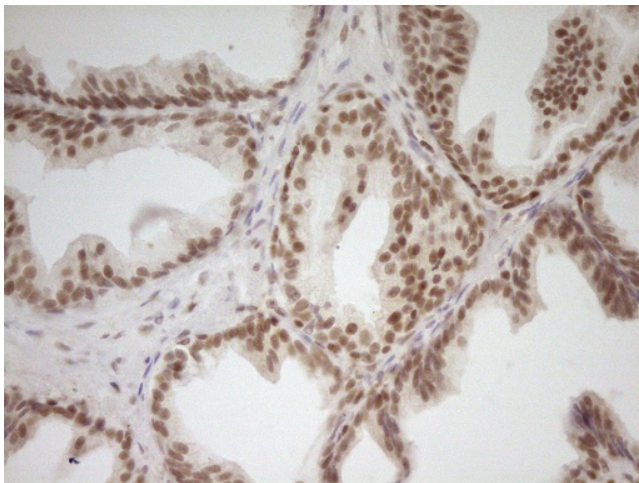




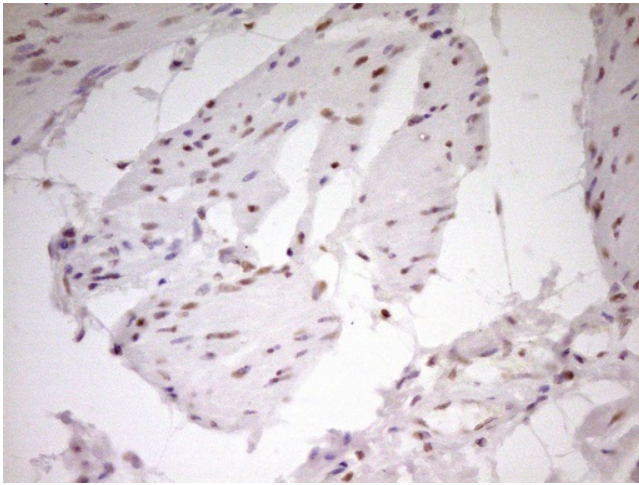
Immunohistochemical staining of paraffin-embedded Human pancreas tissue within the normal limits using anti-NR2C2 mouse monoclonal antibody. (Heat-induced epitope retrieval by 1mM EDTA in 10mM Tris, pH8.5, 120°C for 3min, [TA807229])



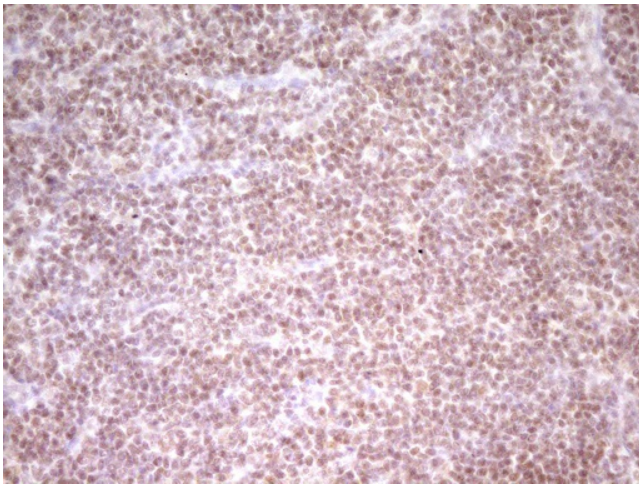
Immunohistochemical staining of paraffin-embedded Human prostate tissue within the normal limits using anti-NR2C2 mouse monoclonal antibody. (Heat-induced epitope retrieval by 1mM EDTA in 10mM Tris, pH8.5, 120°C for 3min, [TA807229])



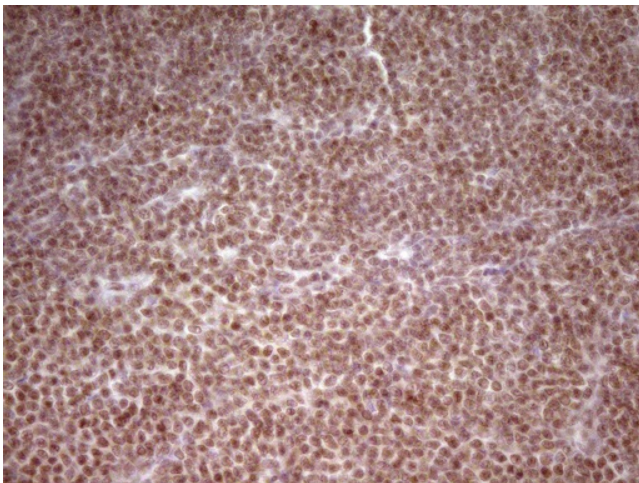
Immunohistochemical staining of paraffin-embedded Carcinoma of Human prostate tissue using anti-NR2C2 mouse monoclonal antibody. (Heat-induced epitope retrieval by 1mM EDTA in 10mM Tris, pH8.5, 120°C for 3min, [TA807229])



Immunohistochemical staining of paraffin-embedded Carcinoma of Human bladder tissue using anti-NR2C2 mouse monoclonal antibody. (Heat-induced epitope retrieval by 1mM EDTA in 10mM Tris, pH8.5, 120°C for 3min, [TA807229])

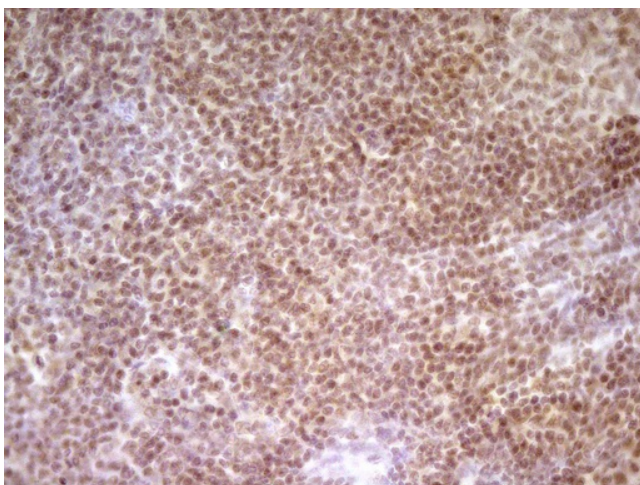


Immunohistochemical staining of paraffin-embedded Human lymph node tissue within the normal limits using anti-NR2C2 mouse monoclonal antibody. (Heat-induced epitope retrieval by 1mM EDTA in 10mM Tris, pH8.5, 120°C for 3min, [TA807229])



Immunohistochemical staining of paraffin-embedded Human lymphoma tissue using anti-NR2C2 mouse monoclonal antibody. (Heat-induced epitope retrieval by 1mM EDTA in 10mM Tris, pH8.5, 120°C for 3min, [TA807229])





Immunohistochemical staining of paraffin-embedded Human tonsil within the normal limits using anti-NR2C2 mouse monoclonal antibody. (Heat-induced epitope retrieval by 1mM EDTA in 10mM Tris, pH8.5, 120°C for 3min, [TA807229])