

## Product datasheet for **TA807188S**

### C2 Mouse Monoclonal Antibody [Clone ID: OTI12G10]

#### Product data:

Product Type:	Primary Antibodies
Clone Name:	OTI12G10
Applications:	IHC, WB
Recommended Dilution:	WB 1:2000, IHC 1:150
Reactivity:	Human
Host:	Mouse
Isotype:	IgG1
Clonality:	Monoclonal
Immunogen:	Human recombinant protein fragment corresponding to amino acids 469-752 of human C2(NP_000054) produced in E.coli.
Formulation:	PBS (pH 7.3) containing 1% BSA, 50% glycerol and 0.02% sodium azide.
Concentration:	1 mg/ml
Purification:	Purified from mouse ascites fluids or tissue culture supernatant by affinity chromatography (protein A/G)
Conjugation:	Unconjugated
Storage:	Store at -20°C as received.
Stability:	Stable for 12 months from date of receipt.
Predicted Protein Size:	81 kDa
Gene Name:	complement component 2
Database Link:	<a href="#">NP_000054</a> <a href="#">Entrez Gene 717 Human</a> <a href="#">P06681</a>



[View online »](#)

**Background:**

Component C2 is a serum glycoprotein that functions as part of the classical pathway of the complement system. Activated C1 cleaves C2 into C2a and C2b. The serine proteinase C2a then combines with complement factor 4b to create the C3 or C5 convertase. Deficiency of C2 has been reported to associated with certain autoimmune diseases and SNPs in this gene have been associated with altered susceptibility to age-related macular degeneration. This gene localizes within the class III region of the MHC on the short arm of chromosome 6. Alternative splicing results in multiple transcript variants encoding distinct isoforms. Additional transcript variants have been described in publications but their full-length sequence has not been determined. [provided by RefSeq, Mar 2009]

**Synonyms:**

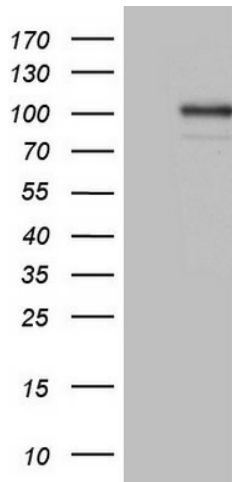
ARMD14; CO2

**Protein Families:**

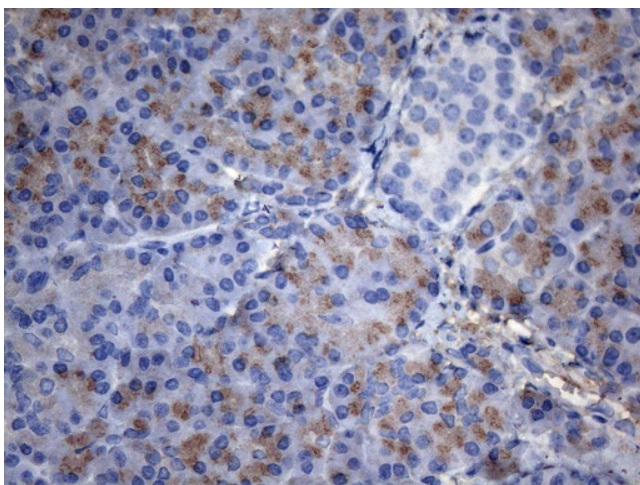
Druggable Genome, Protease, Secreted Protein

**Protein Pathways:**

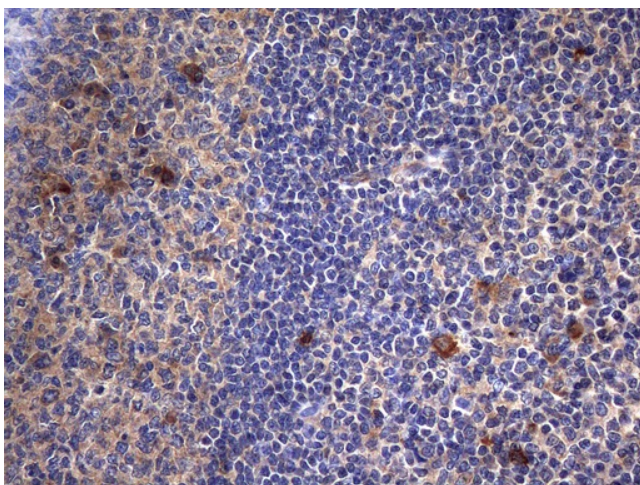
Complement and coagulation cascades, Systemic lupus erythematosus

**Product images:**

HEK293T cells were transfected with the pCMV6-ENTRY control (Cat# [PS100001], Left lane) or pCMV6-ENTRY C2 (Cat# [RC208097], Right lane) cDNA for 48 hrs and lysed. Equivalent amounts of cell lysates (5 ug per lane) were separated by SDS-PAGE and immunoblotted with anti-C2 (Cat# [TA807188])(1:2000). Positive lysates [LY400024] (100ug) and [LC400024] (20ug) can be purchased separately from OriGene.



Immunohistochemical staining of paraffin-embedded Human pancreas tissue within the normal limits using anti-C2 mouse monoclonal antibody. (Heat-induced epitope retrieval by 1mM EDTA in 10mM Tris buffer (pH8.5) at 120°C for 3min, [TA807188]) (1:150)



Immunohistochemical staining of paraffin-embedded Human tonsil within the normal limits using anti-C2 mouse monoclonal antibody. (Heat-induced epitope retrieval by 1mM EDTA in 10mM Tris buffer (pH8.5) at 120°C for 3min, [TA807188]) (1:150)