

## Product datasheet for **TA807186AM**

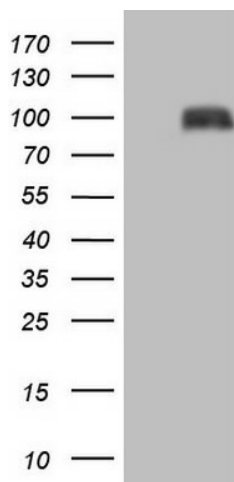
### HGF Mouse Monoclonal Antibody (Biotin conjugated) [Clone ID: OTI2F3]

#### Product data:

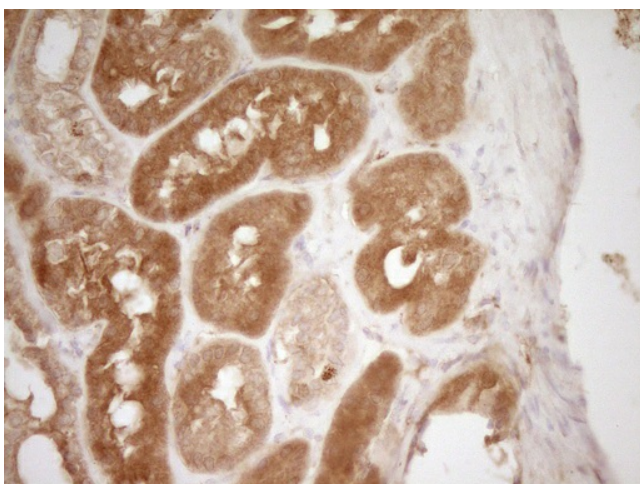
|                         |   |
|-------------------------|---|
| Product Type:           | Primary Antibodies  |
| Clone Name:             | OTI2F3  |
| Applications:           | IHC, WB   |
| Recommended Dilution:   | WB 1:2000, IHC 1:150  |
| Reactivity:             | Human, Mouse, Rat   |
| Host:                   | Mouse   |
| Isotype:                | IgG1  |
| Clonality:              | Monoclonal  |
| Immunogen:              | Human recombinant protein fragment corresponding to amino acids 200-494 of human HGF(NP_000592) produced in E.coli.   |
| Formulation:            | PBS (pH 7.3) containing 1% BSA, 50% glycerol and 0.02% sodium azide.  |
| Concentration:          | 0.5 mg/ml   |
| Purification:           | Purified from mouse ascites fluids or tissue culture supernatant by affinity chromatography (protein A/G)   |
| Conjugation:            | Biotin  |
| Storage:                | Store at -20°C as received.   |
| Stability:              | Stable for 12 months from date of receipt.  |
| Predicted Protein Size: | 79.6 kDa  |
| Gene Name:              | hepatocyte growth factor  |
| Database Link:          | <a href="#">NP_000592</a><br><a href="#">Entrez Gene 15234 Mouse</a> <a href="#">Entrez Gene 24446 Rat</a> <a href="#">Entrez Gene 3082 Human</a><br><a href="#">P14210</a> |
| Synonyms:               | DFNB39; F-TCF; HGFB; HPTA; SF   |
| Protein Families:       | Adult stem cells, Druggable Genome, ES Cell Differentiation/IPS, Protease, Transmembrane  |
| Protein Pathways:       | Cytokine-cytokine receptor interaction, Focal adhesion, Melanoma, Pathways in cancer, Renal cell carcinoma  |



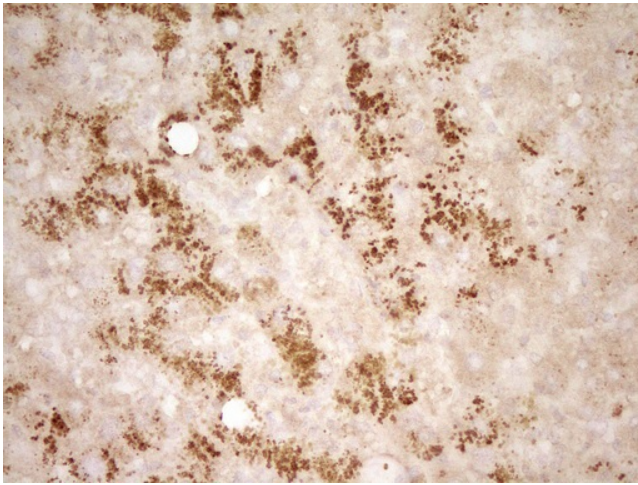
[View online »](#)

**Product images:**

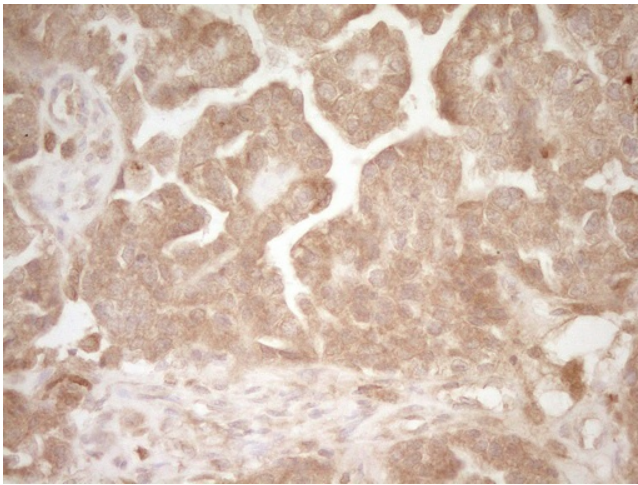
HEK293T cells were transfected with the pCMV6-ENTRY control (Cat# [PS100001], Left lane) or pCMV6-ENTRY HGF (Cat# [RC215593], Right lane) cDNA for 48 hrs and lysed. Equivalent amounts of cell lysates (5 ug per lane) were separated by SDS-PAGE and immunoblotted with anti-HGF (Cat# [TA807186]). Positive lysates [LY400200] (100ug) and [LC400200] (20ug) can be purchased separately from OriGene.



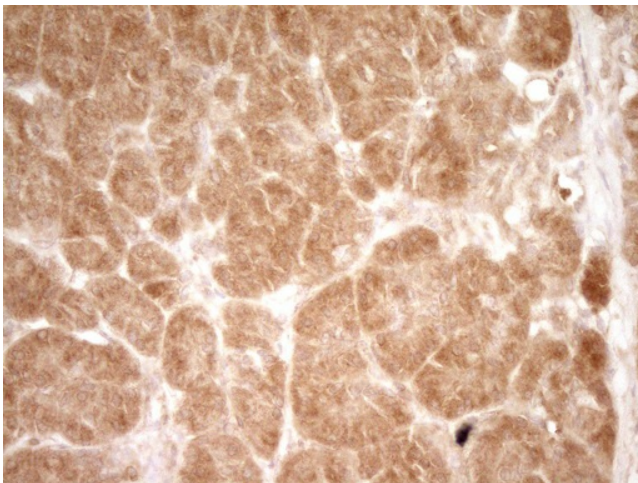
Immunohistochemical staining of paraffin-embedded Human Kidney tissue within the normal limits using anti-HGF mouse monoclonal antibody. (Heat-induced epitope retrieval by 1mM EDTA in 10mM Tris, pH8.5, 120°C for 3min, [TA807186])



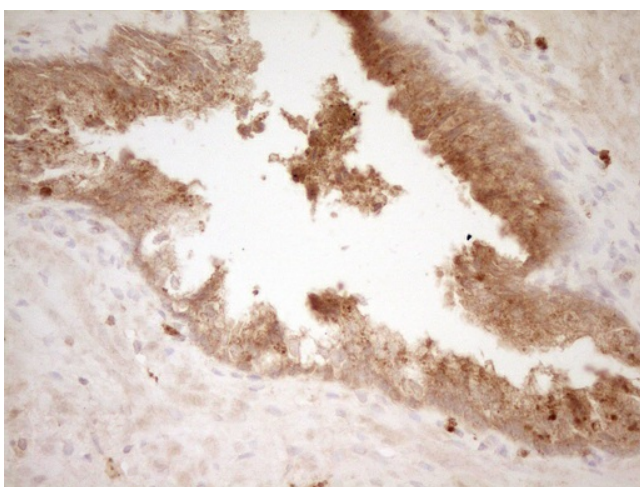
Immunohistochemical staining of paraffin-embedded Human liver tissue within the normal limits using anti-HGF mouse monoclonal antibody. (Heat-induced epitope retrieval by 1mM EDTA in 10mM Tris, pH8.5, 120°C for 3min, [TA807186])



Immunohistochemical staining of paraffin-embedded Adenocarcinoma of Human ovary tissue using anti-HGF mouse monoclonal antibody. (Heat-induced epitope retrieval by 1mM EDTA in 10mM Tris, pH8.5, 120°C for 3min, [TA807186])



Immunohistochemical staining of paraffin-embedded Human pancreas tissue within the normal limits using anti-HGF mouse monoclonal antibody. (Heat-induced epitope retrieval by 1mM EDTA in 10mM Tris, pH8.5, 120°C for 3min, [TA807186])



Immunohistochemical staining of paraffin-embedded Adenocarcinoma of Human endometrium tissue using anti-HGF mouse monoclonal antibody. (Heat-induced epitope retrieval by 1mM EDTA in 10mM Tris, pH8.5, 120°C for 3min, [TA807186])