

Product datasheet for **TA807174**

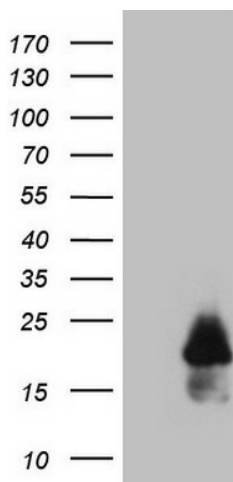
MelanA (MLANA) Mouse Monoclonal Antibody [Clone ID: OTI2A2]

Product data:

Product Type:	Primary Antibodies
Clone Name:	OTI2A2
Applications:	WB
Recommended Dilution:	WB 1:2000
Reactivity:	Human
Host:	Mouse
Isotype:	IgG1
Clonality:	Monoclonal
Immunogen:	Human recombinant protein fragment corresponding to amino acids 48-118 of human MLANA(NP_005502) produced in E.coli.
Formulation:	PBS (pH 7.3) containing 1% BSA, 50% glycerol and 0.02% sodium azide.
Concentration:	1 mg/ml
Purification:	Purified from mouse ascites fluids or tissue culture supernatant by affinity chromatography (protein A/G)
Conjugation:	Unconjugated
Storage:	Store at -20°C as received.
Stability:	Stable for 12 months from date of receipt.
Predicted Protein Size:	13 kDa
Gene Name:	melan-A
Database Link:	NP_005502 Entrez Gene 2315 Human Q16655
Synonyms:	MART-1; MART1
Protein Families:	Transmembrane



[View online »](#)

Product images:

HEK293T cells were transfected with the pCMV6-ENTRY control (Left lane) or pCMV6-ENTRY MLANA ([RC204190], Right lane) cDNA for 48 hrs and lysed. Equivalent amounts of cell lysates (5 ug per lane) were separated by SDS-PAGE and immunoblotted with anti-MLANA (1:2000). Positive lysates [LY417261] (100ug) and [LC417261] (20ug) can be purchased separately from OriGene.