

## Product datasheet for **TA807147BM**

### Apolipoprotein H (APOH) Mouse Monoclonal Antibody (HRP conjugated) [Clone ID: OTI4A11]

#### Product data:

Product Type:	Primary Antibodies
Clone Name:	OTI4A11
Applications:	IHC, WB
Recommended Dilution:	WB 1:2000, IHC 1:150
Reactivity:	Human
Host:	Mouse
Isotype:	IgG1
Clonality:	Monoclonal
Immunogen:	Human recombinant protein fragment corresponding to amino acids 120-345 of human APOH(NP_000033) produced in E.coli.
Formulation:	PBS (pH 7.3) containing 1% BSA, 50% glycerol.
Concentration:	0.5 mg/ml
Purification:	Purified from mouse ascites fluids or tissue culture supernatant by affinity chromatography (protein A/G)
Conjugation:	HRP
Storage:	Store at -20°C as received.
Stability:	Stable for 12 months from date of receipt.
Predicted Protein Size:	36.2 kDa
Gene Name:	apolipoprotein H
Database Link:	<a href="#">NP_000033</a> <a href="#">Entrez Gene 350 Human P02749</a>
Background:	Apolipoprotein H has been implicated in a variety of physiologic pathways including lipoprotein metabolism, coagulation, and the production of antiphospholipid autoantibodies. APOH may be a required cofactor for anionic phospholipid binding by the antiphospholipid autoantibodies found in sera of many patients with lupus and primary antiphospholipid syndrome, but it does not seem to be required for the reactivity of antiphospholipid autoantibodies associated with infections. [provided by RefSeq, Jul

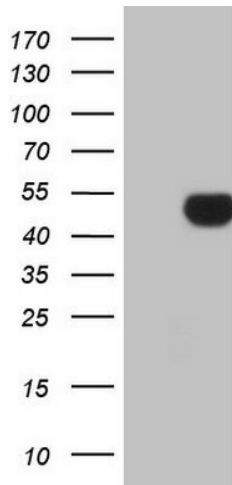


[View online »](#)

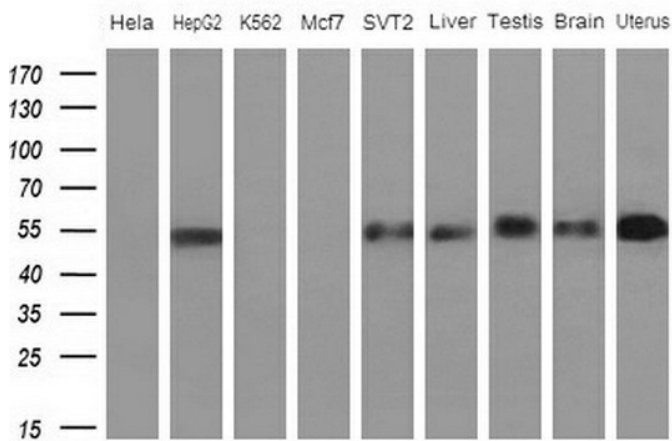
**Synonyms:** B2G1; B2GP1; BG

**Protein Families:** Druggable Genome, Secreted Protein

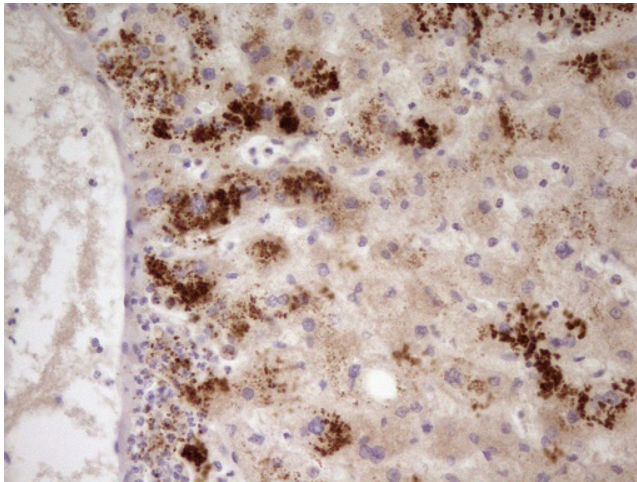
**Product images:**



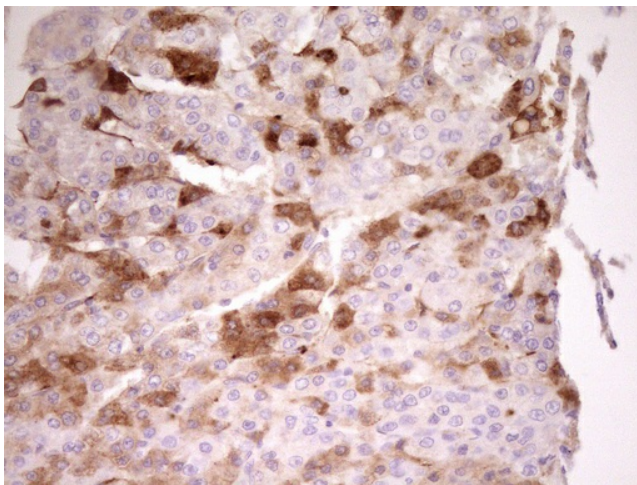
HEK293T cells were transfected with the pCMV6-ENTRY control (Cat# [PS100001], Left lane) or pCMV6-ENTRY APOH (Cat# [RC205017], Right lane) cDNA for 48 hrs and lysed. Equivalent amounts of cell lysates (5 ug per lane) were separated by SDS-PAGE and immunoblotted with anti-APOH(Cat# [TA807147]). Positive lysates [LY424960] (100ug) and [LC424960] (20ug) can be purchased separately from OriGene.



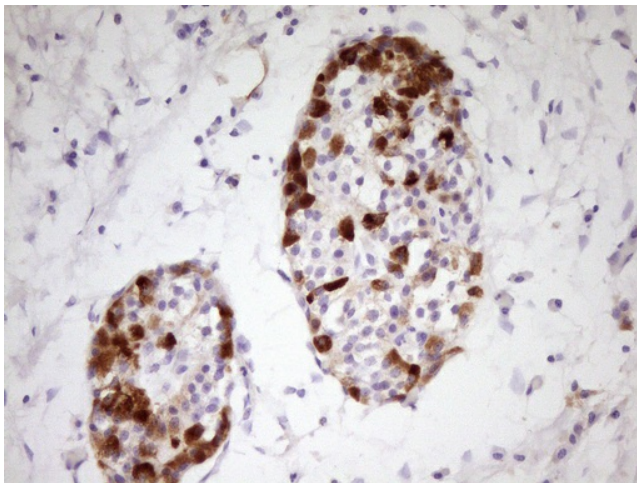
Western blot analysis of extracts (10ug) from 5 different cell lines and 4 human tissue by using anti-APOH monoclonal antibody (1: HeLa; 2: HepG2; 3: K562; 4: Mcf7; 5: SVT2; 6: Liver; 7: Testis; 8: Brain; 9: Uterus) at 1:200 dilution.



Immunohistochemical staining of paraffin-embedded Human liver tissue within the normal limits using anti-APOH mouse monoclonal antibody. (Heat-induced epitope retrieval by 1mM EDTA in 10mM Tris, pH8.5, 120°C for 3min, [TA807147])



Immunohistochemical staining of paraffin-embedded Carcinoma of Human liver tissue using anti-APOH mouse monoclonal antibody. (Heat-induced epitope retrieval by 1mM EDTA in 10mM Tris, pH8.5, 120°C for 3min, [TA807147])



Immunohistochemical staining of paraffin-embedded Carcinoma of Human pancreas tissue using anti-APOH mouse monoclonal antibody. (Heat-induced epitope retrieval by 1mM EDTA in 10mM Tris, pH8.5, 120°C for 3min, [TA807147])