

## Product datasheet for **TA807122S**

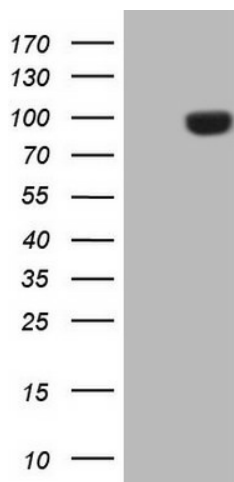
### TEM1 (CD248) Mouse Monoclonal Antibody [Clone ID: OTI4B8]

#### Product data:

Product Type:	Primary Antibodies
Clone Name:	OTI4B8
Applications:	WB
Recommended Dilution:	WB 1:2000
Reactivity:	Human
Host:	Mouse
Isotype:	IgG2b
Clonality:	Monoclonal
Immunogen:	Human recombinant protein fragment corresponding to amino acids 20-300 of human CD248(NP_065137) produced in E.coli.
Formulation:	PBS (pH 7.3) containing 1% BSA, 50% glycerol and 0.02% sodium azide.
Concentration:	1 mg/ml
Purification:	Purified from mouse ascites fluids or tissue culture supernatant by affinity chromatography (protein A/G)
Conjugation:	Unconjugated
Storage:	Store at -20°C as received.
Stability:	Stable for 12 months from date of receipt.
Predicted Protein Size:	80.7 kDa
Gene Name:	CD248 molecule
Database Link:	<a href="#">NP_065137</a> <a href="#">Entrez Gene 57124 Human</a> <a href="#">Q9HCU0</a>
Synonyms:	CD164L1; TEM1
Protein Families:	Druggable Genome, Transmembrane



[View online »](#)

**Product images:**

HEK293T cells were transfected with the pCMV6-ENTRY control (Left lane) or pCMV6-ENTRY CD248 ([RC208576], Right lane) cDNA for 48 hrs and lysed. Equivalent amounts of cell lysates (5 ug per lane) were separated by SDS-PAGE and immunoblotted with anti-CD248. Positive lysates [LY412436] (100ug) and [LC412436] (20ug) can be purchased separately from OriGene.