

Product datasheet for **TA807116AM**

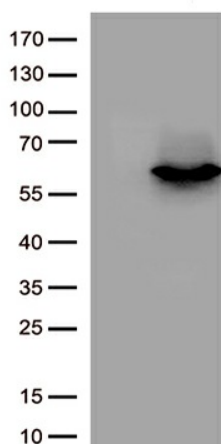
PTEN Mouse Monoclonal Antibody (Biotin conjugated) [Clone ID: OTI5A5]

Product data:

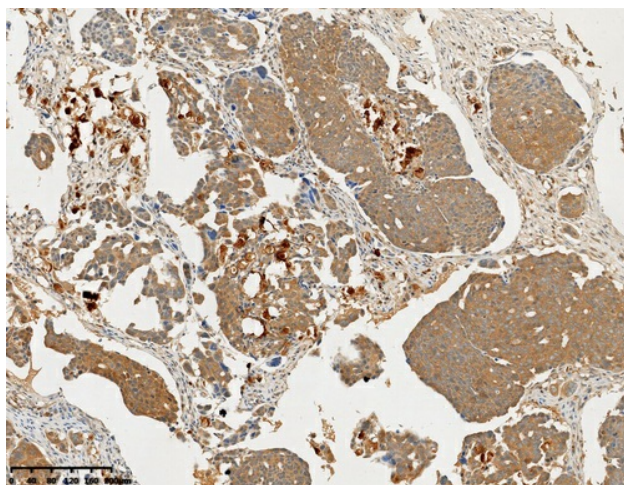
Product Type:	Primary Antibodies
Clone Name:	OTI5A5
Applications:	IHC
Recommended Dilution:	IHC 1:10
Reactivity:	Mouse, Rat
Host:	Mouse
Isotype:	IgG2a
Clonality:	Monoclonal
Immunogen:	Human recombinant protein fragment corresponding to amino acids 104-403 of human PTEN(NP_000305) produced in E.coli.
Formulation:	PBS (pH 7.3) containing 1% BSA, 50% glycerol and 0.02% sodium azide.
Concentration:	0.5 mg/ml
Purification:	Purified from mouse ascites fluids or tissue culture supernatant by affinity chromatography (protein A/G)
Conjugation:	Biotin
Storage:	Store at -20°C as received.
Stability:	Stable for 12 months from date of receipt.
Predicted Protein Size:	47 kDa
Database Link:	NP_000305 Entrez Gene 19211 Mouse Entrez Gene 50557 Rat
Synonyms:	10q23del; BZS; CWS1; DEC; GLM2; MHAM; MMAC1; PTEN1; TEP1
Protein Families:	Druggable Genome, Phosphatase
Protein Pathways:	Endometrial cancer, Focal adhesion, Glioma, Inositol phosphate metabolism, Melanoma, p53 signaling pathway, Pathways in cancer, Phosphatidylinositol signaling system, Prostate cancer, Small cell lung cancer, Tight junction



[View online »](#)

Product images:

HEK293T cells were transfected with pCMV6-ENTRY control (left lane) or pCMV6-ENTRY PTEN (Cat# [RC202627], right lane) cDNA clones for 48 hrs and lysed. Equivalent amount of cell lysates (5 ug per lane) were separated by SDS-PAGE and immunoblotted with anti-PTEN. (1:500)



Immunohistochemical staining of paraffin-embedded Carcinoma of Human liver tissue using anti-ARG1 mouse monoclonal antibody. Heat-induced epitope retrieval by EDTA solution buffer pH 8.0 at 120°C for 3 min.