

Product datasheet for **TA807111BM**

PAPSS2 Mouse Monoclonal Antibody (HRP conjugated) [Clone ID: OTI1E12]

Product data:

Product Type:	Primary Antibodies
Clone Name:	OTI1E12
Applications:	WB
Recommended Dilution:	WB 1:2000
Reactivity:	Human, Mouse, Rat
Host:	Mouse
Isotype:	IgG1
Clonality:	Monoclonal
Immunogen:	Human recombinant protein fragment corresponding to amino acids 1-247 of human PAPSS2(NP_004661) produced in E.coli.
Formulation:	PBS (pH 7.3) containing 1% BSA, 50% glycerol.
Concentration:	0.5 mg/ml
Purification:	Purified from mouse ascites fluids or tissue culture supernatant by affinity chromatography (protein A/G)
Conjugation:	HRP
Storage:	Store at -20°C as received.
Stability:	Stable for 12 months from date of receipt.
Predicted Protein Size:	69.3 kDa
Gene Name:	3'-phosphoadenosine 5'-phosphosulfate synthase 2
Database Link:	NP_004661 Entrez Gene 23972 Mouse Entrez Gene 294103 Rat Entrez Gene 9060 Human O95340



[View online »](#)

Background:

Sulfation is a common modification of endogenous (lipids, proteins, and carbohydrates) and exogenous (xenobiotics and drugs) compounds. In mammals, the sulfate source is 3'-phosphoadenosine 5'-phosphosulfate (PAPS), created from ATP and inorganic sulfate. Two different tissue isoforms encoded by different genes synthesize PAPS. This gene encodes one of the two PAPS synthetases. Defects in this gene cause the Pakistani type of spondyloepimetaphyseal dysplasia. Two alternatively spliced transcript variants that encode different isoforms have been described for this gene. [provided by RefSeq, Jul 2008]

Synonyms:

ATPSK2; BCYM4; SK2

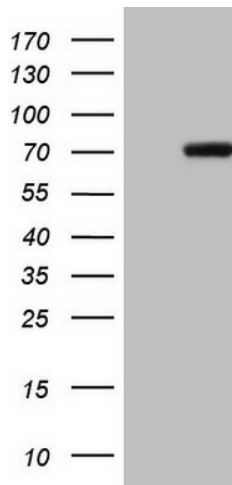
Protein Families:

Druggable Genome

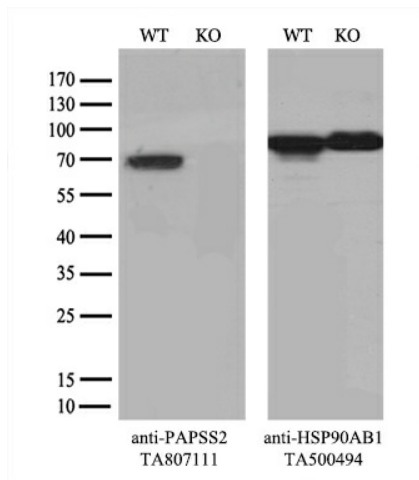
Protein Pathways:

Metabolic pathways, Purine metabolism, Selenoamino acid metabolism, Sulfur metabolism

Product images:



HEK293T cells were transfected with the pCMV6-ENTRY control (Left lane) or pCMV6-ENTRY PAPSS2 ([RC200551], Right lane) cDNA for 48 hrs and lysed. Equivalent amounts of cell lysates (5 ug per lane) were separated by SDS-PAGE and immunoblotted with anti-PAPSS2. Positive lysates [LY417837] (100ug) and [LC417837] (20ug) can be purchased separately from OriGene.



Equivalent amounts of cell lysates (10 ug per lane) of wild-type HeLa cells (WT, Cat# LC810HELA) and PAPSS2-Knockout HeLa cells (KO, Cat# [LC812053]) were separated by SDS-PAGE and immunoblotted with anti-PAPSS2 monoclonal antibody [TA807111] (1:500^v). Then the blotted membrane was stripped and reprobed with anti-HSP90 antibody as a loading control.