

Product datasheet for **TA807082M**

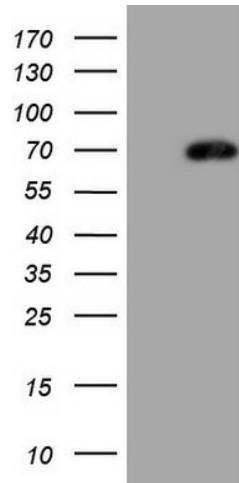
Lymphocyte Activation Gene 3 (LAG3) Mouse Monoclonal Antibody [Clone ID: OT18F6]

Product data:

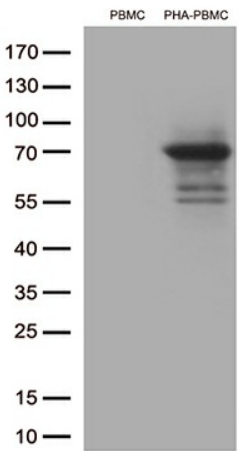
Product Type:	Primary Antibodies
Clone Name:	OT18F6
Applications:	FC, IHC, WB
Recommended Dilution:	WB 1:2000, IHC 1:150
Reactivity:	Human
Host:	Mouse
Isotype:	IgG2b
Clonality:	Monoclonal
Immunogen:	Human recombinant protein fragment corresponding to amino acids 66-332 of human LAG3(NP_002277) produced in E.coli.
Formulation:	PBS (pH 7.3) containing 1% BSA, 50% glycerol and 0.02% sodium azide.
Concentration:	1 mg/ml
Purification:	Purified from mouse ascites fluids or tissue culture supernatant by affinity chromatography (protein A/G)
Conjugation:	Unconjugated
Storage:	Store at -20°C as received.
Stability:	Stable for 12 months from date of receipt.
Gene Name:	lymphocyte activating 3
Database Link:	NP_002277 Entrez Gene 3902 Human P18627
Background:	Lymphocyte-activation protein 3 belongs to Ig superfamily and contains 4 extracellular Ig-like domains. The LAG3 gene contains 8 exons. The sequence data, exon/intron organization, and chromosomal localization all indicate a close relationship of LAG3 to CD4. [provided by RefSeq, Jul 2008]
Synonyms:	CD223
Protein Families:	Transmembrane


[View online »](#)

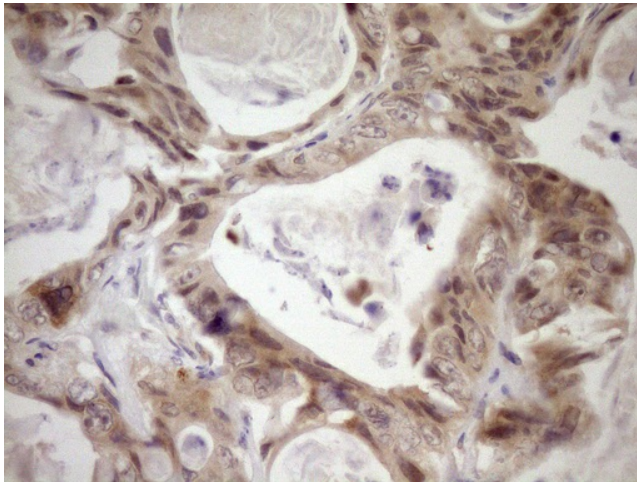
Product images:



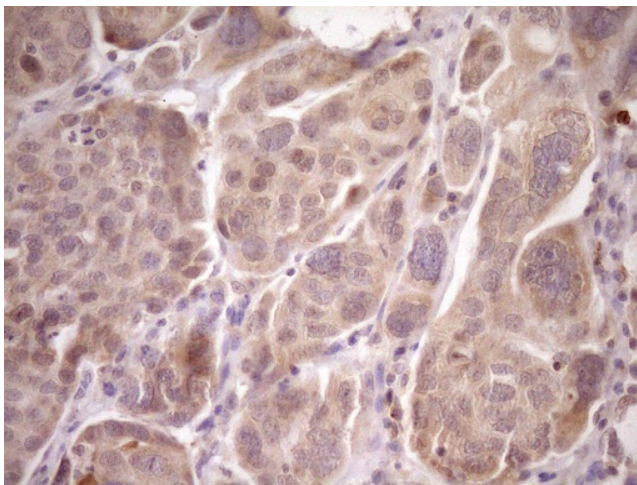
HEK293T cells were transfected with the pCMV6-ENTRY control (Cat# [PS100001], Left lane) or pCMV6-ENTRY LAG3 (Cat# [RC220269], Right lane) cDNA for 48 hrs and lysed. Equivalent amounts of cell lysates (5 ug per lane) were separated by SDS-PAGE and immunoblotted with anti-LAG3 (Cat# [TA807082])(1:2000). Positive lysates [LY400828] (100ug) and [LC400828] (20ug) can be purchased separately from OriGene.



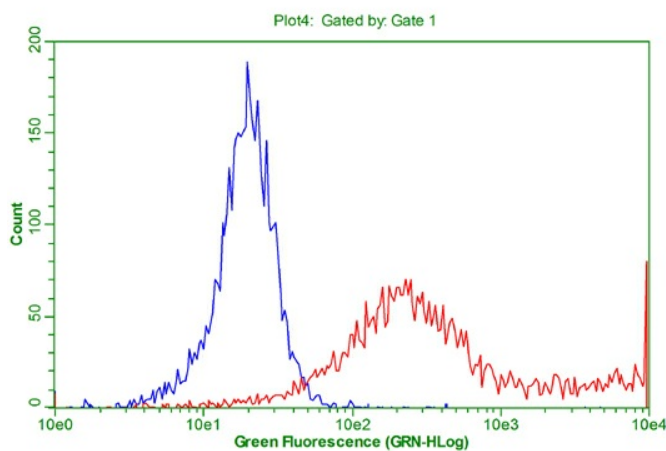
Western blot analysis of extracts (35ug) from 2 cell lines (Human PBMC treated with 10ug/ml PHA for 72h (Right)/untreated (Left)) lysates by using anti-LAG3 monoclonal antibody (1:150).



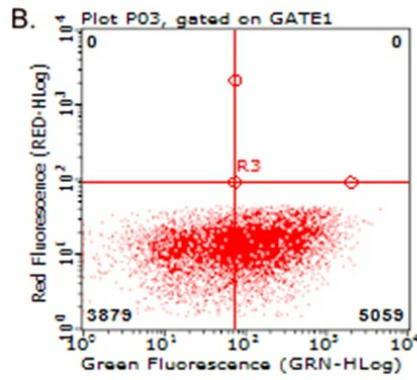
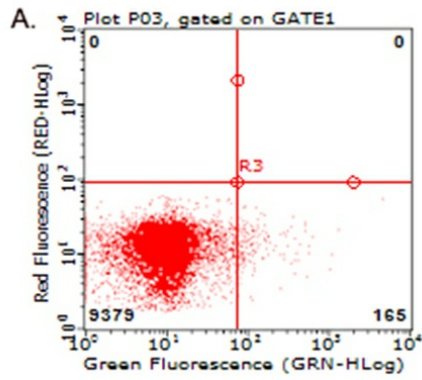
Immunohistochemical staining of paraffin-embedded Adenocarcinoma of Human colon tissue using anti-LAG3 mouse monoclonal antibody. Heat-induced epitope retrieval by EDTA solution buffer pH 8.0 at 120°C for 3 min.



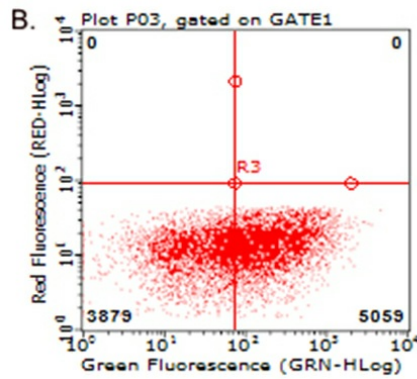
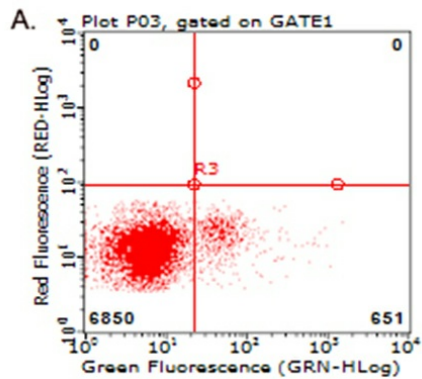
Immunohistochemical staining of paraffin-embedded Adenocarcinoma of Human ovary tissue using anti-LAG3 mouse monoclonal antibody. Heat-induced epitope retrieval by EDTA solution buffer pH 8.0 at 120°C for 3 min.



LAG3 stable cells was stained by anti-LAG3 ([TA807082], red) or IgG isotype control ([TA180144], blue) and analyzed by flow. Control IgG and LAG3 were diluted 1:100



Flow cytometric analysis of living PBMCs treated with 10ug/ml PHA for 72h (Right)/untreated (Left) using anti-LAG3 antibody ([TA807082]) (1:100).



Flow cytometric analysis of living PBMCs treated with 10ug/ml PHA for 72h (Right) using anti-LAG3 antibody ([TA807082]). Cells incubated with a non-specific antibody (Left) were used as isotype control (1:100).