

Product datasheet for **TA807073AM**

Lymphocyte Activation Gene 3 (LAG3) Mouse Monoclonal Antibody (Biotin conjugated) [Clone ID: OTI5C3]

Product data:

Product Type:	Primary Antibodies
Clone Name:	OTI5C3
Applications:	FC, WB
Recommended Dilution:	WB 1:2000
Reactivity:	Human
Host:	Mouse
Isotype:	IgG2b
Clonality:	Monoclonal
Immunogen:	Human recombinant protein fragment corresponding to amino acids 66-332 of human LAG3(NP_002277) produced in E.coli.
Formulation:	PBS (pH 7.3) containing 1% BSA, 50% glycerol and 0.02% sodium azide.
Concentration:	0.5 mg/ml
Purification:	Purified from mouse ascites fluids or tissue culture supernatant by affinity chromatography (protein A/G)
Conjugation:	Biotin
Storage:	Store at -20°C as received.
Stability:	Stable for 12 months from date of receipt.
Predicted Protein Size:	54.8 kDa
Gene Name:	lymphocyte activating 3
Database Link:	NP_002277 Entrez Gene 3902 Human P18627
Background:	Lymphocyte-activation protein 3 belongs to Ig superfamily and contains 4 extracellular Ig-like domains. The LAG3 gene contains 8 exons. The sequence data, exon/intron organization, and chromosomal localization all indicate a close relationship of LAG3 to CD4. [provided by RefSeq, Jul 2008]

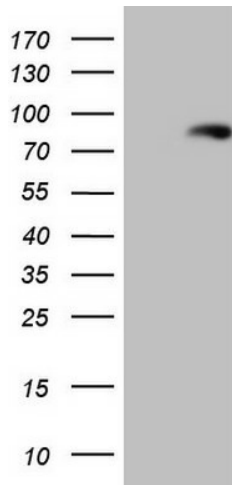


[View online »](#)

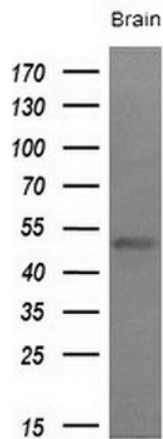
Synonyms: CD223

Protein Families: Transmembrane

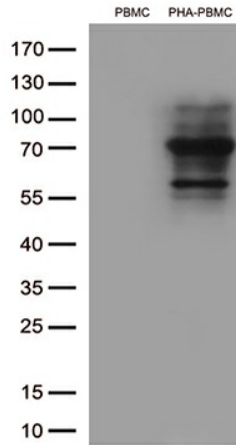
Product images:



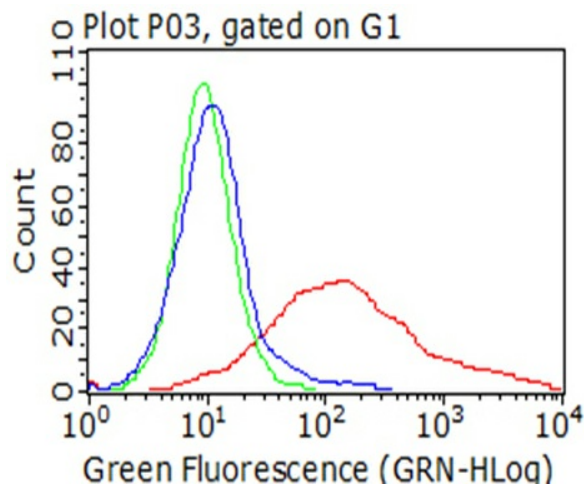
HEK293T cells were transfected with the pCMV6-ENTRY control (Left lane) or pCMV6-ENTRY LAG3 ([RC220269], Right lane) cDNA for 48 hrs and lysed. Equivalent amounts of cell lysates (5 ug per lane) were separated by SDS-PAGE and immunoblotted with anti-LAG3. Positive lysates [LY400828] (100ug) and [LC400828] (20ug) can be purchased separately from OriGene.



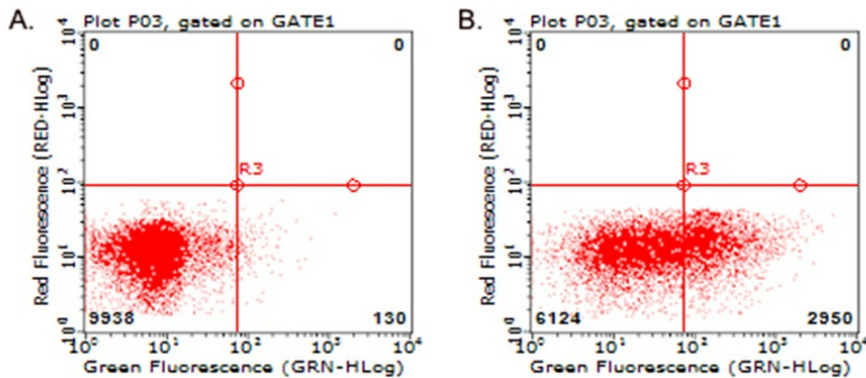
Western blot analysis of extracts (10ug) from 1 human tissue by using anti-LAG3 monoclonal antibody at 1:200 dilution.



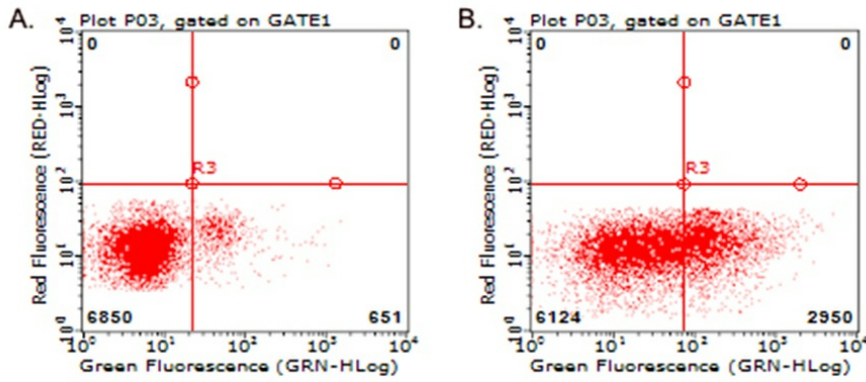
Western blot analysis of extracts (35ug) from 2 cell lines (Human PBMC treated with 10ug/ml PHA for 72h (Right)/untreated (Left)) lysates by using anti-LAG3 monoclonal antibody (1:150).



Flow cytometric analysis of living 293T cells transfected with LAG3 overexpression plasmid ([RC220269]), Red/empty vector ([PS100001], Blue) using anti-LAG3 antibody ([TA807073]). Cells incubated with a non-specific antibody (Green) were used as isotype control. (1;100)



Flow cytometric analysis of living PBMCs treated with 10ug/ml PHA for 72h (Right)/untreated (Left) using anti-LAG3 antibody ([TA807073]) (1:100).



Flow cytometric analysis of living PBMCs treated with 10ug/ml PHA for 72h (Right) using anti-LAG3 antibody ([TA807073]). Cells incubated with a non-specific antibody (Left) were used as isotype control (1:100).