

## Product datasheet for **TA807065AM**

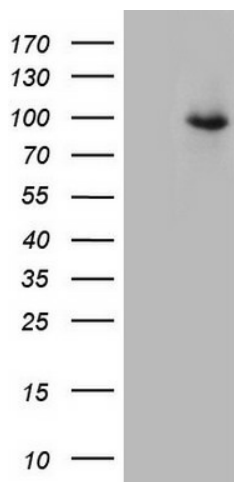
### TEM1 (CD248) Mouse Monoclonal Antibody (Biotin conjugated) [Clone ID: OTI1H6]

#### Product data:

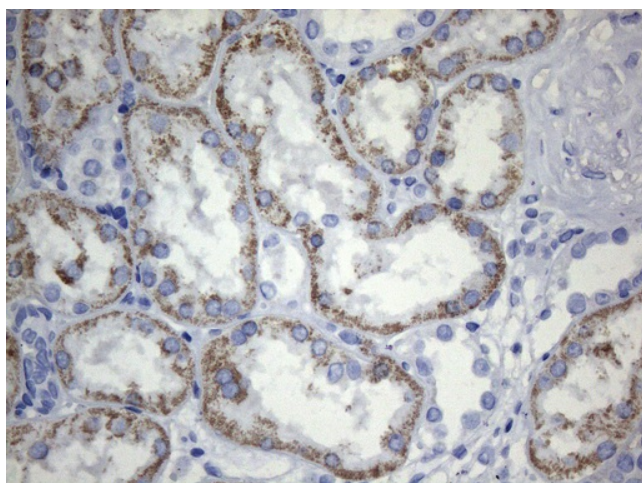
Product Type:	Primary Antibodies
Clone Name:	OTI1H6
Applications:	IHC, WB
Recommended Dilution:	WB 1:500, IHC 1:150
Reactivity:	Human
Host:	Mouse
Isotype:	IgG1
Clonality:	Monoclonal
Immunogen:	Human recombinant protein fragment corresponding to amino acids 20-300 of human CD248(NP_065137) produced in E.coli.
Formulation:	PBS (pH 7.3) containing 1% BSA, 50% glycerol and 0.02% sodium azide.
Concentration:	0.5 mg/ml
Purification:	Purified from mouse ascites fluids or tissue culture supernatant by affinity chromatography (protein A/G)
Conjugation:	Biotin
Storage:	Store at -20°C as received.
Stability:	Stable for 12 months from date of receipt.
Predicted Protein Size:	80.7 kDa
Gene Name:	CD248 molecule
Database Link:	<a href="#">NP_065137</a> <a href="#">Entrez Gene 57124 Human</a> <a href="#">Q9HCU0</a>
Synonyms:	CD164L1; TEM1
Protein Families:	Druggable Genome, Transmembrane



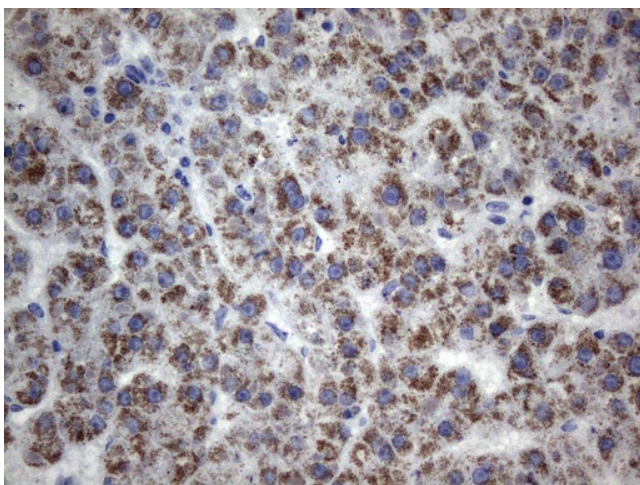
[View online »](#)

**Product images:**

HEK293T cells were transfected with the pCMV6-ENTRY control (Cat# [PS100001], Left lane) or pCMV6-ENTRY CD248 (Cat# [RC208576], Right lane) cDNA for 48 hrs and lysed. Equivalent amounts of cell lysates (5 ug per lane) were separated by SDS-PAGE and immunoblotted with anti-CD248 (Cat# [TA807065])(1:500). Positive lysates [LY412436] (100ug) and [LC412436] (20ug) can be purchased separately from OriGene.



Immunohistochemical staining of paraffin-embedded Human Kidney tissue within the normal limits using anti-CD248 mouse monoclonal antibody. (Heat-induced epitope retrieval by 1mM EDTA in 10mM Tris buffer (pH8.5) at 120°C for 3min, [TA807065]) (1:150)



Immunohistochemical staining of paraffin-embedded Carcinoma of Human liver tissue using anti-CD248 mouse monoclonal antibody. (Heat-induced epitope retrieval by 1mM EDTA in 10mM Tris buffer (pH8.5) at 120°C for 3min, [TA807065]) (1:150)