

## Product datasheet for **TA807064BM**

### **APOB48R (APOBR) Mouse Monoclonal Antibody (HRP conjugated) [Clone ID: OTI1B1]**

#### **Product data:**

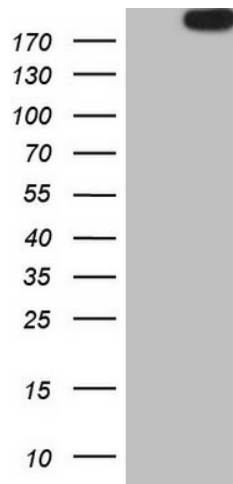
Product Type:	Primary Antibodies
Clone Name:	OTI1B1
Applications:	IHC, WB
Recommended Dilution:	WB 1:2000, IHC 1:150
Reactivity:	Human
Host:	Mouse
Isotype:	IgG1
Clonality:	Monoclonal
Immunogen:	Human recombinant protein fragment corresponding to amino acids 780-1088 of human APOBR(NP_061160) produced in E.coli.
Formulation:	PBS (pH 7.3) containing 1% BSA, 50% glycerol.
Concentration:	0.5 mg/ml
Purification:	Purified from mouse ascites fluids or tissue culture supernatant by affinity chromatography (protein A/G)
Conjugation:	HRP
Storage:	Store at -20°C as received.
Stability:	Stable for 12 months from date of receipt.
Predicted Protein Size:	114.7 kDa
Gene Name:	apolipoprotein B receptor
Database Link:	<a href="#">NP_061160</a> <a href="#">Entrez Gene 55911 Human</a> <a href="#">Q0VD83</a>
Background:	Apolipoprotein B48 receptor is a macrophage receptor that binds to the apolipoprotein B48 of dietary triglyceride (TG)-rich lipoproteins. This receptor may provide essential lipids, lipid-soluble vitamins and other nutrients to reticuloendothelial cells. If overwhelmed with elevated plasma triglyceride, the apolipoprotein B48 receptor may contribute to foam cell formation, endothelial dysfunction, and atherothrombogenesis. [provided by RefSeq, Jul 2008]


[View online »](#)

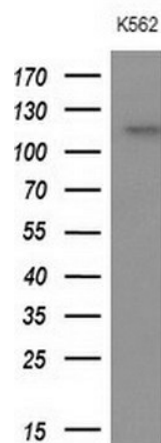
**Synonyms:** APOB48R; APOB100R

**Protein Families:** Druggable Genome

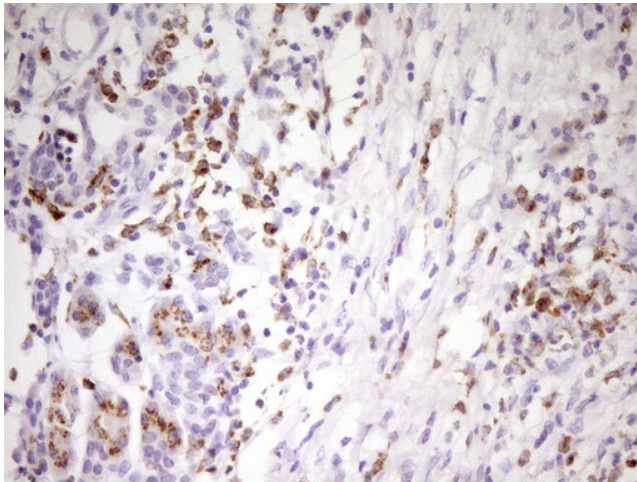
## Product images:



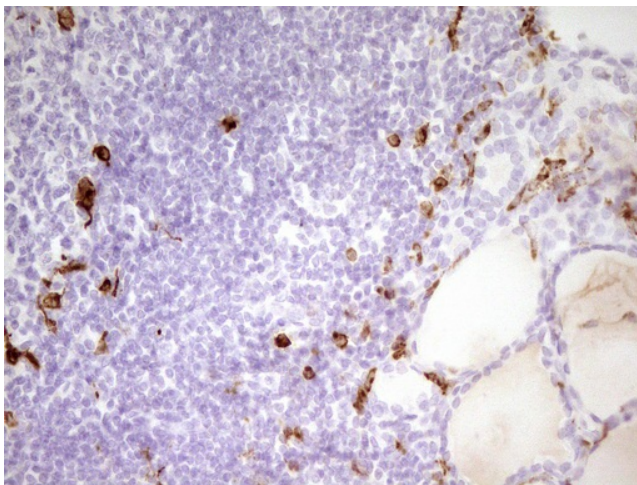
HEK293T cells were transfected with the pCMV6-ENTRY control (Cat# [PS100001], Left lane) or pCMV6-ENTRY APOBR (Cat# [RC213795], Right lane) cDNA for 48 hrs and lysed. Equivalent amounts of cell lysates (5 ug per lane) were separated by SDS-PAGE and immunoblotted with anti-APOBR antibody (Cat# [TA807064]). Positive lysates [LY412951] (100ug) and [LC412951] (20ug) can be purchased separately from OriGene.



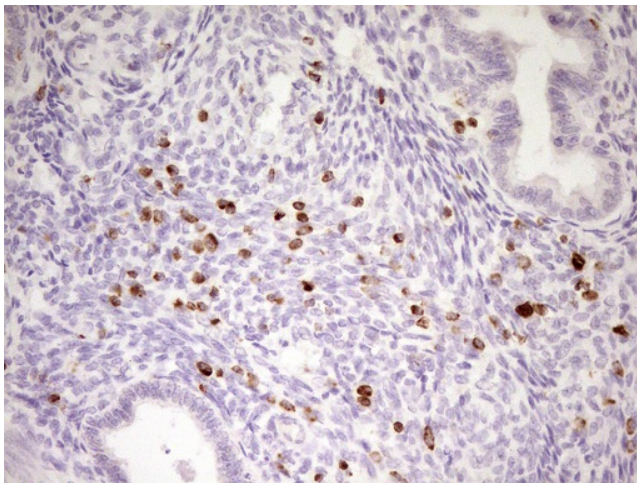
Western blot analysis of extracts (10ug) from 1 cell line by using anti-APOBR monoclonal antibody at 1:200 dilution.



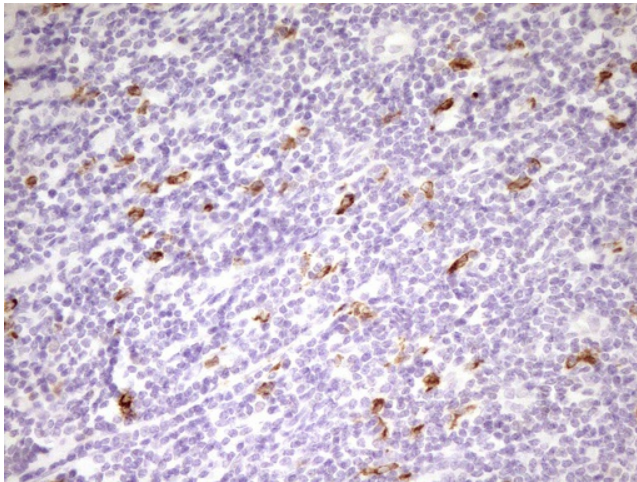
Immunohistochemical staining of paraffin-embedded Human pancreas tissue within the normal limits using anti-APOBR mouse monoclonal antibody. Heat-induced epitope retrieval by EDTA solution buffer pH 8.0 at 120°C for 3 min.



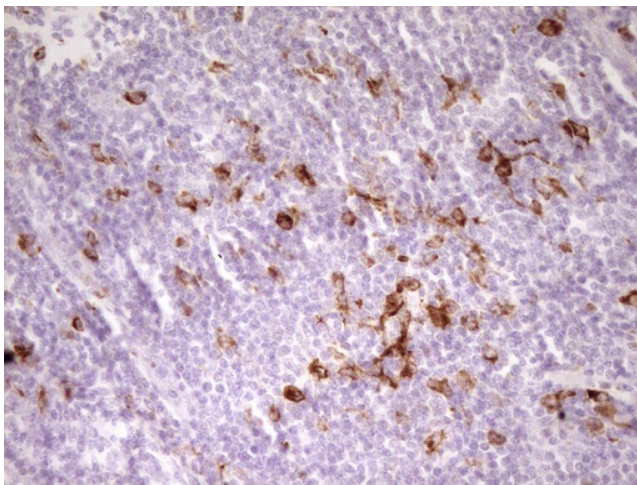
Immunohistochemical staining of paraffin-embedded Human thyroid tissue within the normal limits using anti-APOBR mouse monoclonal antibody. Heat-induced epitope retrieval by EDTA solution buffer pH 8.0 at 120°C for 3 min.



Immunohistochemical staining of paraffin-embedded Human endometrium tissue within the normal limits using anti-APOBR mouse monoclonal antibody. Heat-induced epitope retrieval by EDTA solution buffer pH 8.0 at 120°C for 3 min.



Immunohistochemical staining of paraffin-embedded Carcinoma of Human prostate tissue using anti-APOBR mouse monoclonal antibody. Heat-induced epitope retrieval by EDTA solution buffer pH 8.0 at 120°C for 3 min.



Immunohistochemical staining of paraffin-embedded Human tonsil within the normal limits using anti-APOBR mouse monoclonal antibody. Heat-induced epitope retrieval by EDTA solution buffer pH 8.0 at 120°C for 3 min.