

## Product datasheet for **TA807052S**

### Oxytocin neurophysin 1 (OXT) Mouse Monoclonal Antibody [Clone ID: OTI5G4]

#### Product data:

Product Type:	Primary Antibodies
Clone Name:	OTI5G4
Applications:	WB
Recommended Dilution:	WB 1:2000
Reactivity:	Human, Mouse, Rat
Host:	Mouse
Isotype:	IgG2b
Clonality:	Monoclonal
Immunogen:	Human recombinant protein fragment corresponding to amino acids 20-125 of human OXT(NP_000906) produced in E.coli.
Formulation:	PBS (pH 7.3) containing 1% BSA, 50% glycerol and 0.02% sodium azide.
Concentration:	1 mg/ml
Purification:	Purified from mouse ascites fluids or tissue culture supernatant by affinity chromatography (protein A/G)
Conjugation:	Unconjugated
Storage:	Store at -20°C as received.
Stability:	Stable for 12 months from date of receipt.
Predicted Protein Size:	10.9 kDa
Gene Name:	oxytocin/neurophysin I prepropeptide
Database Link:	<a href="#">NP_000906</a> <a href="#">Entrez Gene 5020 Human</a> <a href="#">P01178</a>



[View online »](#)

**Background:**

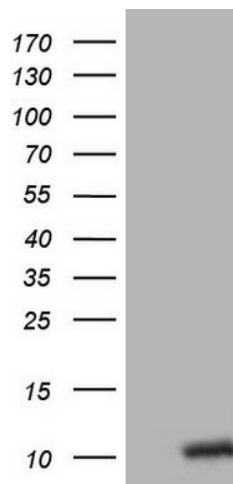
This gene encodes a precursor protein that is processed to produce oxytocin and neurophysin I. Oxytocin is a posterior pituitary hormone which is synthesized as an inactive precursor in the hypothalamus along with its carrier protein neurophysin I. Together with neurophysin, it is packaged into neurosecretory vesicles and transported axonally to the nerve endings in the neurohypophysis, where it is either stored or secreted into the bloodstream. The precursor seems to be activated while it is being transported along the axon to the posterior pituitary. This hormone contracts smooth muscle during parturition and lactation. It is also involved in cognition, tolerance, adaptation and complex sexual and maternal behaviour, as well as in the regulation of water excretion and cardiovascular functions. [provided by RefSeq, Dec 2013]

**Synonyms:**

OT; OT-NPI; OXT-NPI

**Protein Families:**

Secreted Protein

**Product images:**

HEK293T cells were transfected with the pCMV6-ENTRY control (Cat# [PS100001], Left lane) or pCMV6-ENTRY OXT (Cat# [RC224226], Right lane) cDNA for 48 hrs and lysed. Equivalent amounts of cell lysates (5 ug per lane) were separated by SDS-PAGE and immunoblotted with anti-OXT (Cat# [TA807052])(1:2000). Positive lysates [LY424458] (100ug) and [LC424458] (20ug) can be purchased separately from OriGene.