

## Product datasheet for **TA807045M**

### Adrenomedullin (ADM) Mouse Monoclonal Antibody [Clone ID: OTI2A4]

#### Product data:

Product Type:	Primary Antibodies
Clone Name:	OTI2A4
Applications:	WB
Recommended Dilution:	WB 1:2000
Reactivity:	Human
Host:	Mouse
Isotype:	IgG1
Clonality:	Monoclonal
Immunogen:	Human recombinant protein fragment corresponding to amino acids 22-146 of human ADM(NP_001115) produced in E.coli.
Formulation:	PBS (pH 7.3) containing 1% BSA, 50% glycerol and 0.02% sodium azide.
Concentration:	1 mg/ml
Purification:	Purified from mouse ascites fluids or tissue culture supernatant by affinity chromatography (protein A/G)
Conjugation:	Unconjugated
Storage:	Store at -20°C as received.
Stability:	Stable for 12 months from date of receipt.
Predicted Protein Size:	20.2 kDa
Gene Name:	adrenomedullin
Database Link:	<a href="#">NP_001115</a> <a href="#">Entrez Gene 133 Human</a> <a href="#">P35318</a>

[View online »](#)

**Background:**

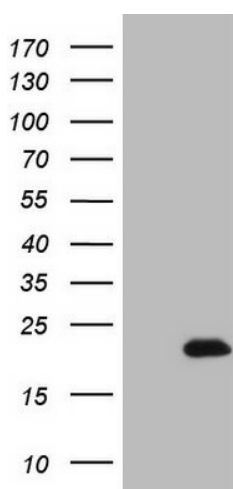
Adrenomedullin, a hypotensive peptide found in human pheochromocytoma, consists of 52 amino acids, has 1 intramolecular disulfide bond, and shows a slight homology with the calcitonin gene-related peptide. It may function as a hormone in circulation control because it is found in blood in a considerable concentration. The precursor, called preproadrenomedullin, is 185 amino acids long. By RNA-blot analysis, human adrenomedullin mRNA was found to be highly expressed in several tissues. Genomic ADM DNA consists of 4 exons and 3 introns, with the 5-prime flanking region containing TATA, CAAT, and GC boxes. There are also multiple binding sites for activator protein-2 and a cAMP-regulated enhancer element. [provided by RefSeq, Jul 2008]

**Synonyms:**

AM; PAMP

**Protein Families:**

Druggable Genome, Secreted Protein

**Product images:**


HEK293T cells were transfected with the pCMV6-ENTRY control (Cat# [PS100001], Left lane) or pCMV6-ENTRY ADM (Cat# [RC200507], Right lane) cDNA for 48 hrs and lysed. Equivalent amounts of cell lysates (5 ug per lane) were separated by SDS-PAGE and immunoblotted with anti-ADM (Cat# [TA807045]). Positive lysates [LY420111] (100ug) and [LC420111] (20ug) can be purchased separately from OriGene.