

Product datasheet for **TA807000S**

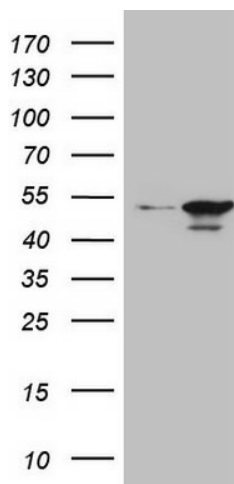
HMG20A Mouse Monoclonal Antibody [Clone ID: OTI5E4]

Product data:

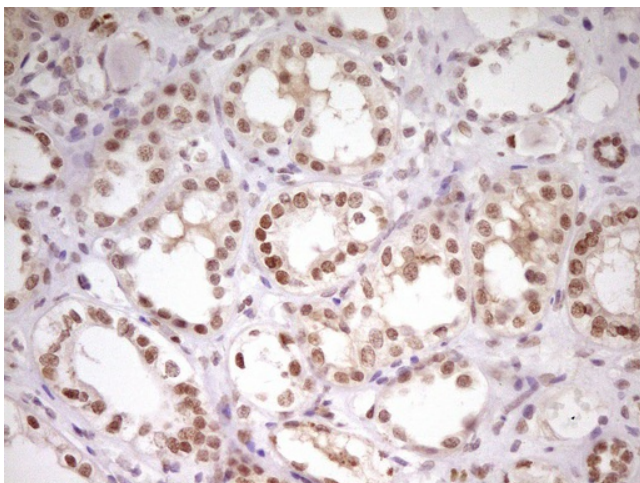
Product Type:	Primary Antibodies
Clone Name:	OTI5E4
Applications:	IHC, WB
Recommended Dilution:	WB 1:2000, IHC 1:150
Reactivity:	Human, Mouse, Rat
Host:	Mouse
Isotype:	IgG1
Clonality:	Monoclonal
Immunogen:	Human recombinant protein fragment corresponding to amino acids 1-281 of human HMG20A(NP_060670) produced in E.coli.
Formulation:	PBS (pH 7.3) containing 1% BSA, 50% glycerol and 0.02% sodium azide.
Concentration:	1 mg/ml
Purification:	Purified from mouse ascites fluids or tissue culture supernatant by affinity chromatography (protein A/G)
Conjugation:	Unconjugated
Storage:	Store at -20°C as received.
Stability:	Stable for 12 months from date of receipt.
Predicted Protein Size:	40 kDa
Gene Name:	high mobility group 20A
Database Link:	NP_060670 Entrez Gene 66867 Mouse Entrez Gene 315689 Rat Entrez Gene 10363 Human Q9NP66
Synonyms:	HMGX1; HMGXB1
Protein Families:	Transcription Factors



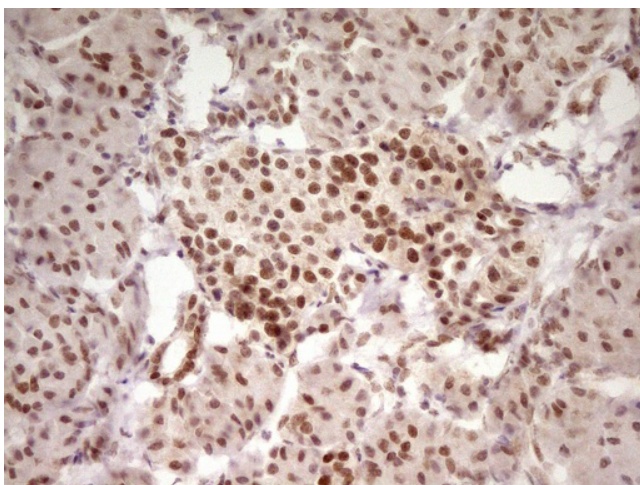
[View online »](#)

Product images:

HEK293T cells were transfected with the pCMV6-ENTRY control (Left lane) or pCMV6-ENTRY HMG20A ([RC201894], Right lane) cDNA for 48 hrs and lysed. Equivalent amounts of cell lysates (5 ug per lane) were separated by SDS-PAGE and immunoblotted with anti-HMG20A. Positive lysates [LY413245] (100ug) and [LC413245] (20ug) can be purchased separately from OriGene.



Immunohistochemical staining of paraffin-embedded Human Kidney tissue within the normal limits using anti-HMG20A mouse monoclonal antibody. (Heat-induced epitope retrieval by 1mM EDTA in 10mM Tris, pH8.5, 120°C for 3min, [TA807000])



Immunohistochemical staining of paraffin-embedded Human pancreas tissue within the normal limits using anti-HMG20A mouse monoclonal antibody. (Heat-induced epitope retrieval by 1mM EDTA in 10mM Tris, pH8.5, 120°C for 3min, [TA807000])