

## Product datasheet for **TA806997BM**

### Cytokeratin 18 (KRT18) Mouse Monoclonal Antibody (HRP conjugated) [Clone ID: OTI10G8]

#### Product data:

Product Type:	Primary Antibodies
Clone Name:	OTI10G8
Applications:	IHC, WB
Recommended Dilution:	WB 1:500, IHC 1:2000
Reactivity:	Human, Mouse, Rat
Host:	Mouse
Isotype:	IgG1
Clonality:	Monoclonal
Immunogen:	Human recombinant protein fragment corresponding to amino acids 69-372 of human KRT18(NP_000215) produced in E.coli.
Formulation:	PBS (pH 7.3) containing 1% BSA, 50% glycerol.
Concentration:	0.5 mg/ml
Purification:	Purified from mouse ascites fluids or tissue culture supernatant by affinity chromatography (protein A/G)
Conjugation:	HRP
Storage:	Store at -20°C as received.
Stability:	Stable for 12 months from date of receipt.
Predicted Protein Size:	47.9 kDa
Gene Name:	keratin 18
Database Link:	<a href="#">NP_000215</a> <a href="#">Entrez Gene 16668 Mouse</a> <a href="#">Entrez Gene 294853 Rat</a> <a href="#">Entrez Gene 3875 Human</a> <a href="#">P05783</a>
Background:	KRT18 encodes the type I intermediate filament chain keratin 18. Keratin 18, together with its filament partner keratin 8, are perhaps the most commonly found members of the intermediate filament gene family. They are expressed in single layer epithelial tissues of the body. Mutations in this gene have been linked to cryptogenic cirrhosis. Two transcript variants encoding the same protein have been found for this gene. [provided by RefSeq, Jul 2008]


[View online »](#)

**Synonyms:** CYK18; K18

**Protein Pathways:** Pathogenic Escherichia coli infection

**Product images:**

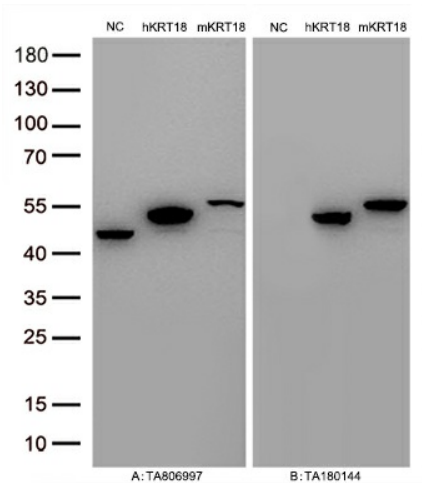
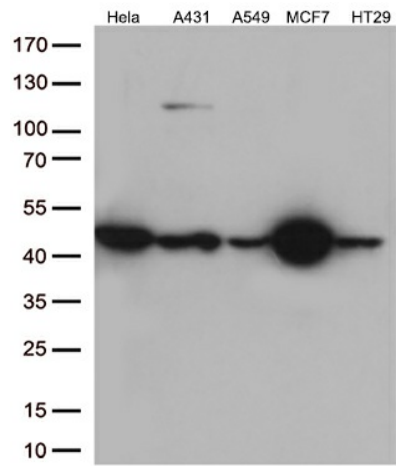
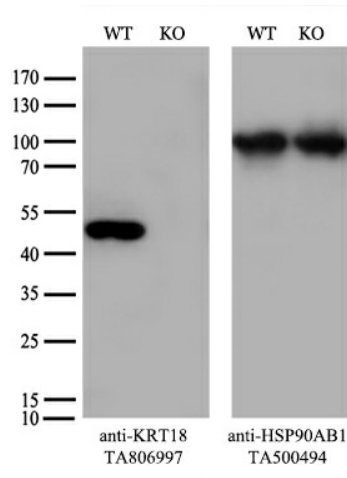


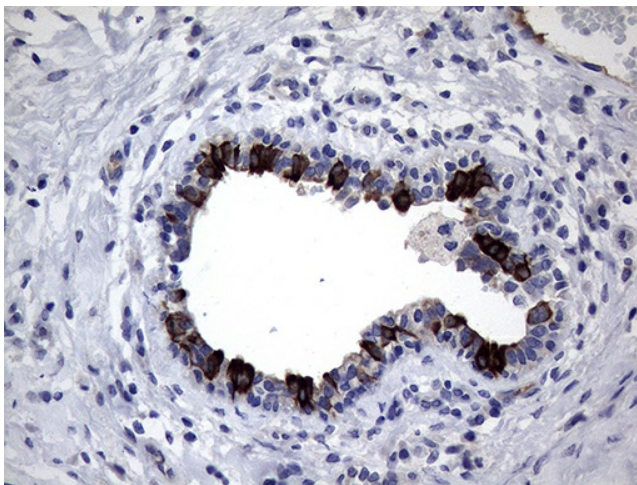
Figure A, Western blot analysis of overexpressed lysates (15ug per lane) from HEK293T cells transfected with empty plasmid ([PS100001], NC), human KRT18 plasmid ([RC210049], hKRT18), mouse KRT18 plasmid ([MR222836], mKRT18) using anti-KRT18 antibody [TA806997] (1:10000@1mg/ml). Figure B, Western blot analysis of the same samples as figure A with anti-DDK antibody ([TA180144], 1:10000@1mg/ml)



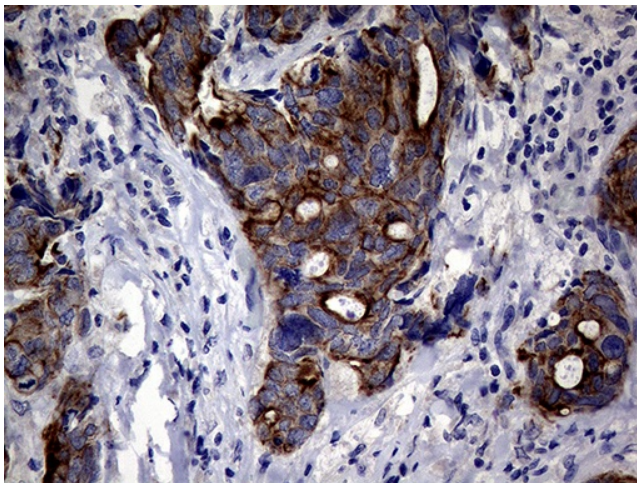
Western blot analysis of extracts (35ug) from 5 different cell lines by using anti-KRT18 monoclonal antibody (1:500).



Equivalent amounts of cell lysates (10 ug per lane) of wild-type HeLa cells (WT, Cat# LC810HELA) and KRT18-Knockout HeLa cells (KO, Cat# [LC831285]) were separated by SDS-PAGE and immunoblotted with anti-KRT18 monoclonal antibody [TA806997] (1:500). Then the blotted membrane was stripped and reprobed with anti-HSP90 antibody as a loading control.

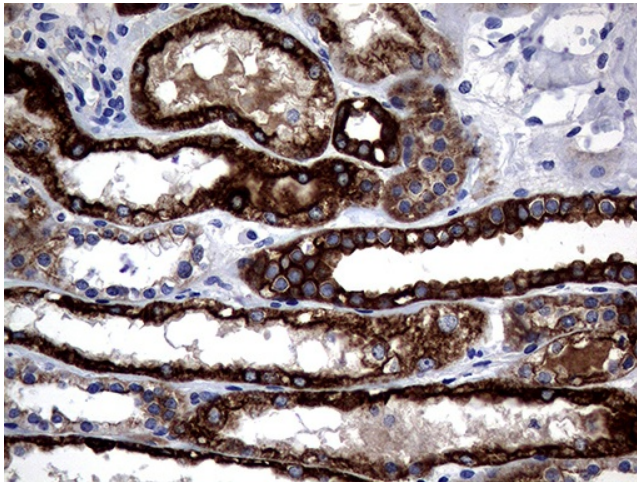


Immunohistochemical staining of paraffin-embedded Human breast tissue within the normal limits using anti-KRT18 mouse monoclonal antibody. Heat-induced epitope retrieval by EDTA solution buffer pH 8.0 at 120°C for 3 min.

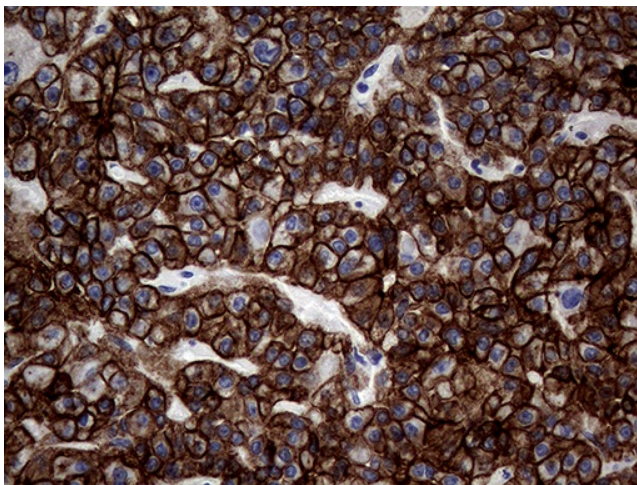


Immunohistochemical staining of paraffin-embedded Adenocarcinoma of Human breast tissue using anti-KRT18 mouse monoclonal antibody. Heat-induced epitope retrieval by EDTA solution buffer pH 8.0 at 120°C for 3 min.

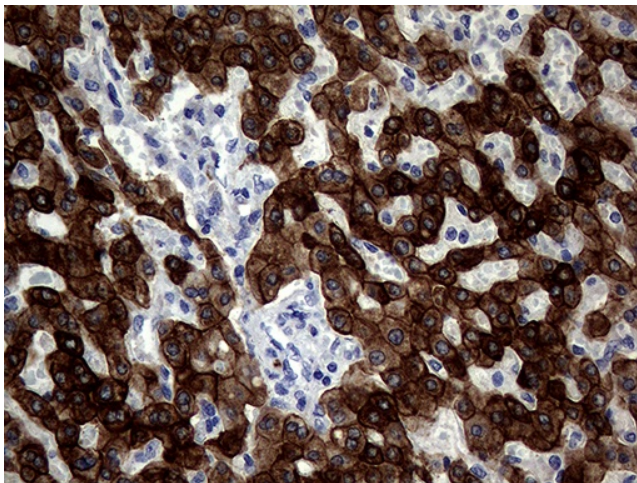




Immunohistochemical staining of paraffin-embedded Human Kidney tissue within the normal limits using anti-KRT18 mouse monoclonal antibody. Heat-induced epitope retrieval by EDTA solution buffer pH 8.0 at 120°C for 3 min.

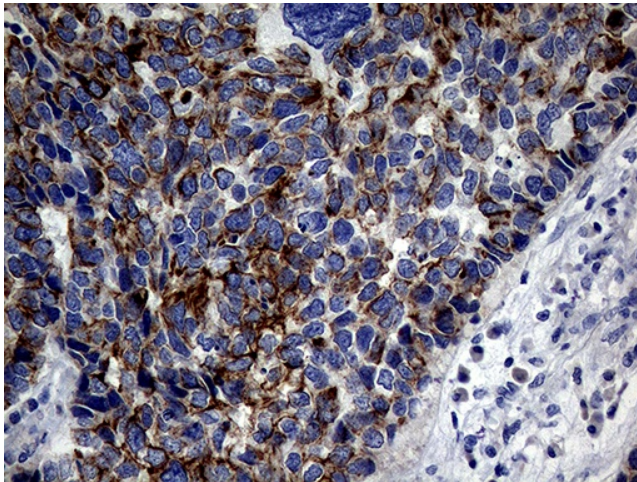


Immunohistochemical staining of paraffin-embedded Human liver tissue within the normal limits using anti-KRT18 mouse monoclonal antibody. Heat-induced epitope retrieval by EDTA solution buffer pH 8.0 at 120°C for 3 min.

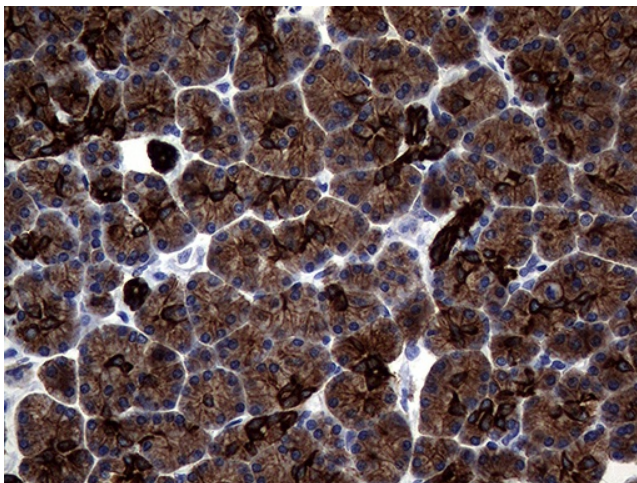


Immunohistochemical staining of paraffin-embedded Carcinoma of Human liver tissue using anti-KRT18 mouse monoclonal antibody. Heat-induced epitope retrieval by EDTA solution buffer pH 8.0 at 120°C for 3 min.

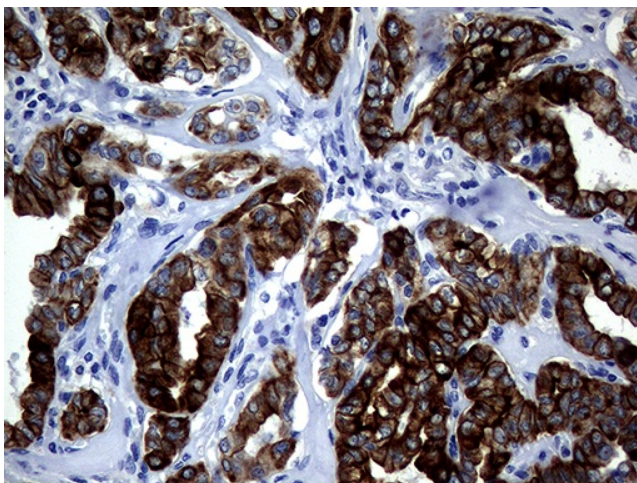




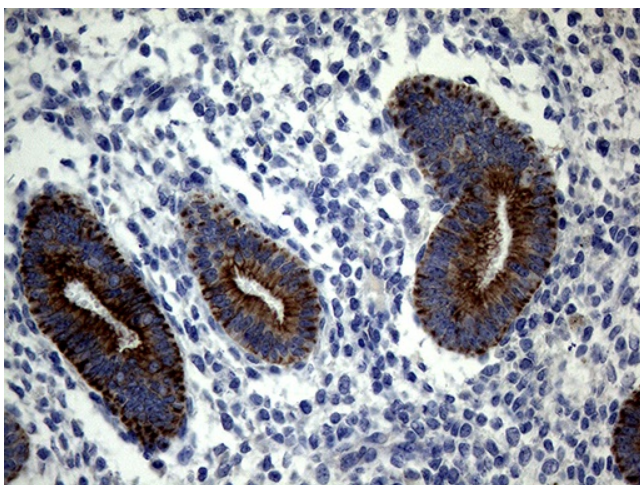
Immunohistochemical staining of paraffin-embedded Carcinoma of Human lung tissue using anti-KRT18 mouse monoclonal antibody. Heat-induced epitope retrieval by EDTA solution buffer pH 8.0 at 120°C for 3 min.



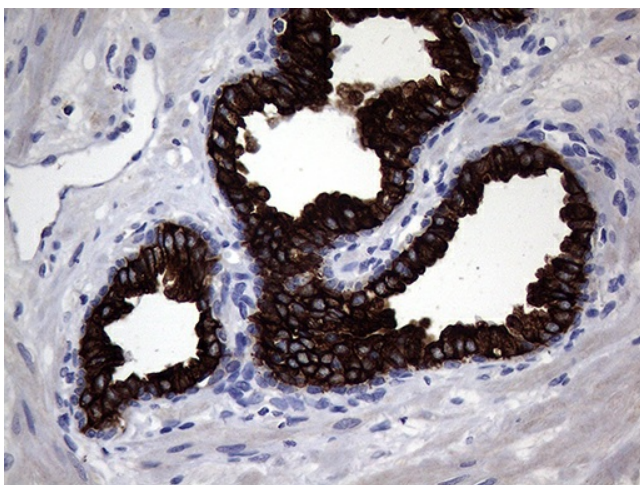
Immunohistochemical staining of paraffin-embedded Human pancreas tissue within the normal limits using anti-KRT18 mouse monoclonal antibody. Heat-induced epitope retrieval by EDTA solution buffer pH 8.0 at 120°C for 3 min.



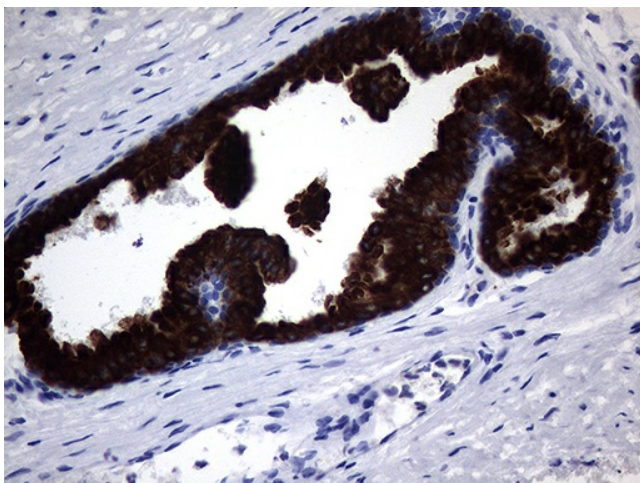
Immunohistochemical staining of paraffin-embedded Carcinoma of Human thyroid tissue using anti-KRT18 mouse monoclonal antibody. Heat-induced epitope retrieval by EDTA solution buffer pH 8.0 at 120°C for 3 min.



Immunohistochemical staining of paraffin-embedded Human endometrium tissue within the normal limits using anti-KRT18 mouse monoclonal antibody. Heat-induced epitope retrieval by EDTA solution buffer pH 8.0 at 120°C for 3 min.



Immunohistochemical staining of paraffin-embedded Human prostate tissue within the normal limits using anti-KRT18 mouse monoclonal antibody. Heat-induced epitope retrieval by EDTA solution buffer pH 8.0 at 120°C for 3 min.



Immunohistochemical staining of paraffin-embedded Carcinoma of Human prostate tissue using anti-KRT18 mouse monoclonal antibody. Heat-induced epitope retrieval by EDTA solution buffer pH 8.0 at 120°C for 3 min.