

## Product datasheet for **TA806993AM**

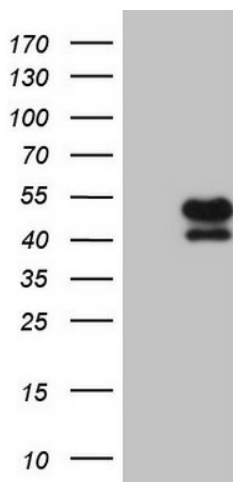
### **KLF2 Mouse Monoclonal Antibody (Biotin conjugated) [Clone ID: OTI4D4]**

#### **Product data:**

Product Type:	Primary Antibodies
Clone Name:	OTI4D4
Applications:	WB
Recommended Dilution:	WB 1:2000
Reactivity:	Human, Mouse, Rat
Host:	Mouse
Isotype:	IgG1
Clonality:	Monoclonal
Immunogen:	Full length human recombinant protein of human KLF2 (NP_057354) produced in E.coli.
Formulation:	PBS (pH 7.3) containing 1% BSA, 50% glycerol and 0.02% sodium azide.
Concentration:	0.5 mg/ml
Purification:	Purified from mouse ascites fluids or tissue culture supernatant by affinity chromatography (protein A/G)
Conjugation:	Biotin
Storage:	Store at -20°C as received.
Stability:	Stable for 12 months from date of receipt.
Predicted Protein Size:	37.2 kDa
Gene Name:	Kruppel-like factor 2
Database Link:	<a href="#">NP_057354</a> <a href="#">Entrez Gene 16598 Mouse</a> <a href="#">Entrez Gene 306330 Rat</a> <a href="#">Entrez Gene 10365 Human</a> <a href="#">Q9Y5W3</a>
Background:	Kruppel-like factors (KLFs) are a family of broadly expressed zinc finger transcription factors. KLF2 regulates T-cell trafficking by promoting expression of the lipid-binding receptor S1P1 (S1PR1; MIM 601974) and the selectin CD62L (SELL; MIM 153240) (summary by Weinreich et al., 2009 [PubMed 19592277]). [supplied by OMIM, Feb 2011]
Synonyms:	LKLF
Protein Families:	Transcription Factors



[View online »](#)

**Product images:**

HEK293T cells were transfected with the pCMV6-ENTRY control (Left lane) or pCMV6-ENTRY KLF2 ([RC210042], Right lane) cDNA for 48 hrs and lysed. Equivalent amounts of cell lysates (5 ug per lane) were separated by SDS-PAGE and immunoblotted with anti-KLF2. Positive lysates [LY414082] (100ug) and [LC414082] (20ug) can be purchased separately from OriGene.