

## Product datasheet for **TA806976M**

### c Fos (FOS) Mouse Monoclonal Antibody [Clone ID: OTI1F12]

#### Product data:

Product Type:	Primary Antibodies
Clone Name:	OTI1F12
Applications:	IHC, WB
Recommended Dilution:	WB 1:2000, IHC 1:150
Reactivity:	Human, Mouse, Rat
Host:	Mouse
Isotype:	IgG1
Clonality:	Monoclonal
Immunogen:	Full length human recombinant protein of human FOS (NP_005243) produced in E.coli.
Formulation:	PBS (pH 7.3) containing 1% BSA, 50% glycerol and 0.02% sodium azide.
Concentration:	1 mg/ml
Purification:	Purified from mouse ascites fluids or tissue culture supernatant by affinity chromatography (protein A/G)
Conjugation:	Unconjugated
Storage:	Store at -20°C as received.
Stability:	Stable for 12 months from date of receipt.
Predicted Protein Size:	40.5 kDa
Gene Name:	Fos proto-oncogene, AP-1 transcription factor subunit
Database Link:	<a href="#">NP_005243</a> <a href="#">Entrez Gene 14281 Mouse</a> <a href="#">Entrez Gene 314322 Rat</a> <a href="#">Entrez Gene 2353 Human</a> <a href="#">P01100</a>
Background:	The Fos gene family consists of 4 members: FOS, FOSB, FOSL1, and FOSL2. These genes encode leucine zipper proteins that can dimerize with proteins of the JUN family, thereby forming the transcription factor complex AP-1. As such, the FOS proteins have been implicated as regulators of cell proliferation, differentiation, and transformation. In some cases, expression of the FOS gene has also been associated with apoptotic cell death. [provided by RefSeq, Jul 2008]

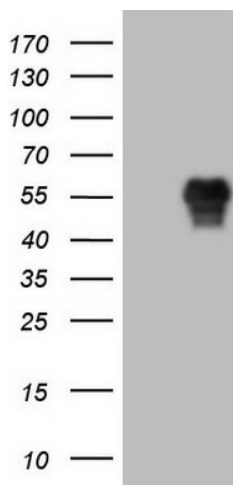

[View online »](#)

**Synonyms:** AP-1; C-FOS; p55

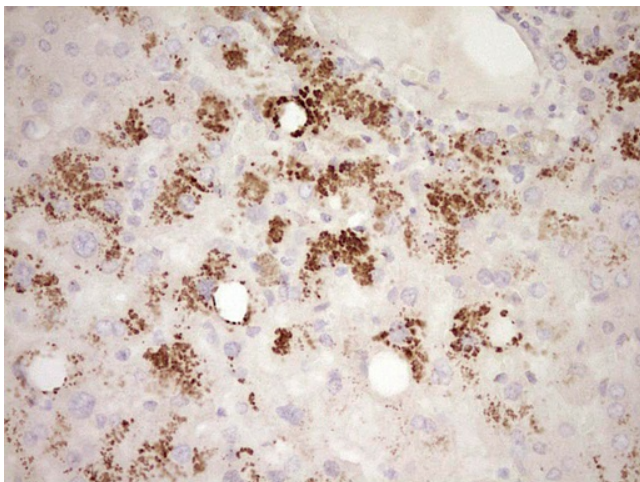
**Protein Families:** Druggable Genome, Transcription Factors

**Protein Pathways:** B cell receptor signaling pathway, Colorectal cancer, MAPK signaling pathway, Pathways in cancer, T cell receptor signaling pathway, Toll-like receptor signaling pathway

**Product images:**



HEK293T cells were transfected with the pCMV6-ENTRY control (Left lane) or pCMV6-ENTRY FOS ([RC202597], Right lane) cDNA for 48 hrs and lysed. Equivalent amounts of cell lysates (5 ug per lane) were separated by SDS-PAGE and immunoblotted with anti-FOS. Positive lysates [LY401614] (100ug) and [LC401614] (20ug) can be purchased separately from OriGene.



Immunohistochemical staining of paraffin-embedded Human liver tissue within the normal limits using anti-FOS mouse monoclonal antibody. Heat-induced epitope retrieval by EDTA solution buffer pH 8.0 at 120°C for 3 min.