

Product datasheet for **TA806945M**

ROR beta (RORB) Mouse Monoclonal Antibody [Clone ID: OTI1C11]

Product data:

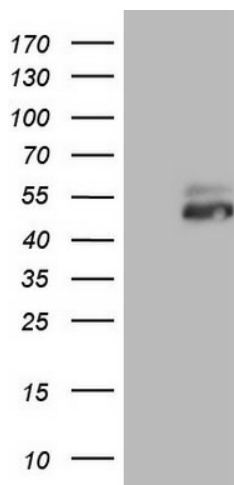
Product Type:	Primary Antibodies
Clone Name:	OTI1C11
Applications:	WB
Recommended Dilution:	WB 1:2000
Reactivity:	Human, Mouse, Rat
Host:	Mouse
Isotype:	IgG2b
Clonality:	Monoclonal
Immunogen:	Human recombinant protein fragment corresponding to amino acids 1-260 of human RORB(NP_008845) produced in E.coli.
Formulation:	PBS (pH 7.3) containing 1% BSA, 50% glycerol and 0.02% sodium azide.
Concentration:	1 mg/ml
Purification:	Purified from mouse ascites fluids or tissue culture supernatant by affinity chromatography (protein A/G)
Conjugation:	Unconjugated
Storage:	Store at -20°C as received.
Stability:	Stable for 12 months from date of receipt.
Predicted Protein Size:	51.9 kDa
Gene Name:	RAR related orphan receptor B
Database Link:	NP_008845 Entrez Gene 225998 Mouse Entrez Gene 309288 Rat Entrez Gene 6096 Human Q92753
Background:	The protein encoded by this gene is a member of the NR1 subfamily of nuclear hormone receptors. It is a DNA-binding protein that can bind as a monomer or as a homodimer to hormone response elements upstream of several genes to enhance the expression of those genes. The encoded protein has been shown to interact with NM23-2, a nucleoside diphosphate kinase involved in organogenesis and differentiation, and to help regulate the expression of some genes involved in circadian rhythm. [provided by RefSeq, Feb 2014]


[View online »](#)

Synonyms: bA133M9.1; NR1F2; ROR-BETA; RZR-BETA; RZRB

Protein Families: Druggable Genome, Nuclear Hormone Receptor, Transcription Factors

Product images:



HEK293T cells were transfected with the pCMV6-ENTRY control (Left lane) or pCMV6-ENTRY RORB ([RC208666], Right lane) cDNA for 48 hrs and lysed. Equivalent amounts of cell lysates (5 ug per lane) were separated by SDS-PAGE and immunoblotted with anti-RORB. Positive lysates [LY402058] (100ug) and [LC402058] (20ug) can be purchased separately from OriGene.