

## Product datasheet for **TA806945AM**

### **ROR beta (RORB) Mouse Monoclonal Antibody (Biotin conjugated) [Clone ID: OTI1C11]**

#### **Product data:**

<b>Product Type:</b>	Primary Antibodies
<b>Clone Name:</b>	OTI1C11
<b>Applications:</b>	WB
<b>Recommended Dilution:</b>	WB 1:2000
<b>Reactivity:</b>	Human, Mouse, Rat
<b>Host:</b>	Mouse
<b>Isotype:</b>	IgG2b
<b>Clonality:</b>	Monoclonal
<b>Immunogen:</b>	Human recombinant protein fragment corresponding to amino acids 1-260 of human RORB(NP_008845) produced in E.coli.
<b>Formulation:</b>	PBS (pH 7.3) containing 1% BSA, 50% glycerol and 0.02% sodium azide.
<b>Concentration:</b>	0.5 mg/ml
<b>Purification:</b>	Purified from mouse ascites fluids or tissue culture supernatant by affinity chromatography (protein A/G)
<b>Conjugation:</b>	Biotin
<b>Storage:</b>	Store at -20°C as received.
<b>Stability:</b>	Stable for 12 months from date of receipt.
<b>Predicted Protein Size:</b>	51.9 kDa
<b>Gene Name:</b>	RAR related orphan receptor B
<b>Database Link:</b>	<a href="#">NP_008845</a> <a href="#">Entrez Gene 225998 Mouse</a> <a href="#">Entrez Gene 309288 Rat</a> <a href="#">Entrez Gene 6096 Human</a> <a href="#">Q92753</a>
<b>Background:</b>	The protein encoded by this gene is a member of the NR1 subfamily of nuclear hormone receptors. It is a DNA-binding protein that can bind as a monomer or as a homodimer to hormone response elements upstream of several genes to enhance the expression of those genes. The encoded protein has been shown to interact with NM23-2, a nucleoside diphosphate kinase involved in organogenesis and differentiation, and to help regulate the expression of some genes involved in circadian rhythm. [provided by RefSeq, Feb 2014]

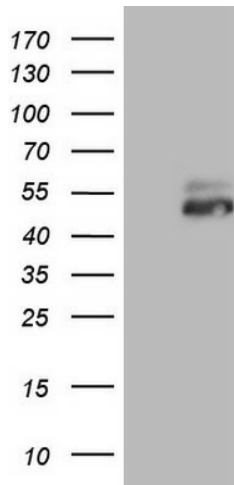


[View online »](#)

**Synonyms:** bA133M9.1; NR1F2; ROR-BETA; RZR-BETA; RZRB

**Protein Families:** Druggable Genome, Nuclear Hormone Receptor, Transcription Factors

**Product images:**



HEK293T cells were transfected with the pCMV6-ENTRY control (Left lane) or pCMV6-ENTRY RORB ([RC208666], Right lane) cDNA for 48 hrs and lysed. Equivalent amounts of cell lysates (5 ug per lane) were separated by SDS-PAGE and immunoblotted with anti-RORB. Positive lysates [LY402058] (100ug) and [LC402058] (20ug) can be purchased separately from OriGene.