

Product datasheet for **TA806927S**

PD1 (PDCD1) Mouse Monoclonal Antibody [Clone ID: OTI21F5]

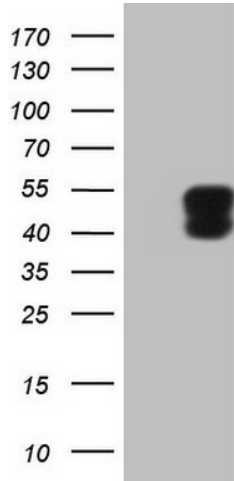
Product data:

Product Type:	Primary Antibodies
Clone Name:	OTI21F5
Applications:	ELISA, FC, IF, LMNX, Neutralize, WB
Recommended Dilution:	WB 1:2000, IF 1:100~900, FLOW 1:50
Reactivity:	Human
Host:	Mouse
Isotype:	IgG2a
Clonality:	Monoclonal
Immunogen:	Full length human recombinant protein of human PDCD1 (NP_005009) produced in HEK293T cell.
Formulation:	PBS (pH 7.3) containing 1% BSA, 50% glycerol and 0.02% sodium azide.
Concentration:	1 mg/ml
Purification:	Purified from mouse ascites fluids or tissue culture supernatant by affinity chromatography (protein A/G)
Conjugation:	Unconjugated
Storage:	Store at -20°C as received.
Stability:	Stable for 12 months from date of receipt.
Predicted Protein Size:	29.2 kDa
Gene Name:	programmed cell death 1
Database Link:	NP_005009 Entrez Gene 5133 Human Q15116
Synonyms:	CD279; hPD-1; hPD-I; hSLE1; PD-1; PD1; SLEB2
Protein Families:	Druggable Genome, Transmembrane
Protein Pathways:	Cell adhesion molecules (CAMs), T cell receptor signaling pathway

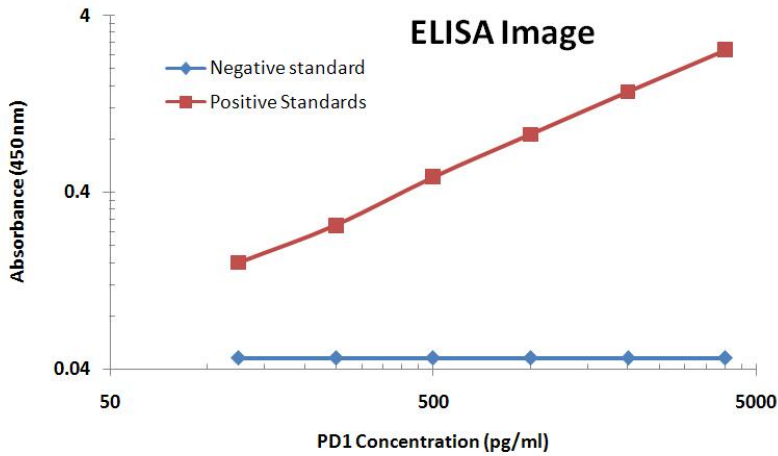


[View online »](#)

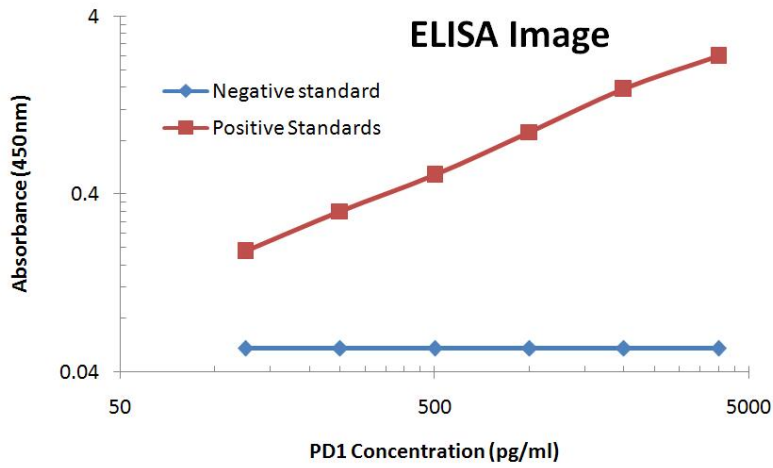
Product images:



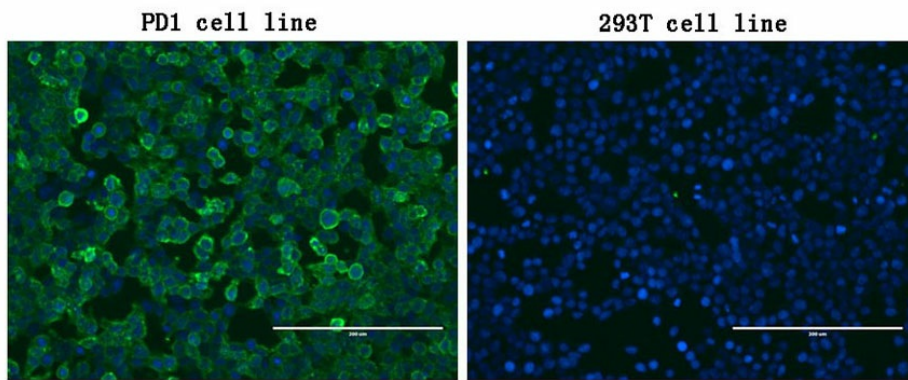
HEK293T cells were transfected with the pCMV6-ENTRY control (Left lane) or pCMV6-ENTRY PDCD1 ([RC210364], Right lane) cDNA for 48 hrs and lysed. Equivalent amounts of cell lysates (5 ug per lane) were separated by SDS-PAGE and immunoblotted with anti-PDCD1 (1:2000). Positive lysates [LY401555] (100ug) and [LC401555] (20ug) can be purchased separately from OriGene.



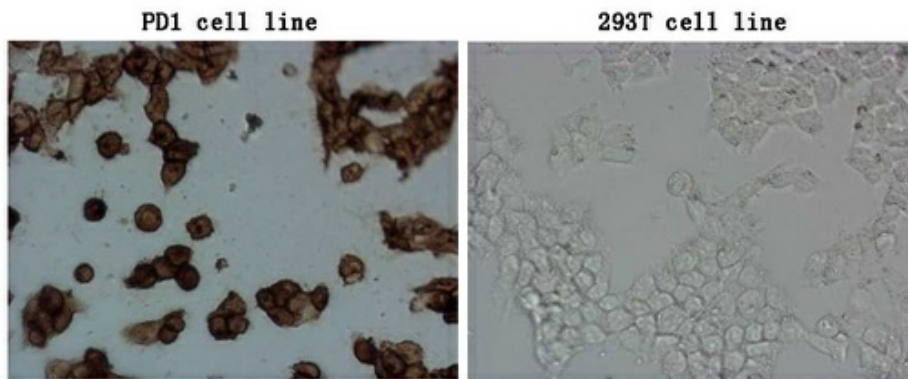
PD1 ELISA with 1B11 Capture ([CF807867]) and 21F5 Detection ([CF806927]) Antibodies. Substrate used: Recombinant Human PD1 ([TP310364])



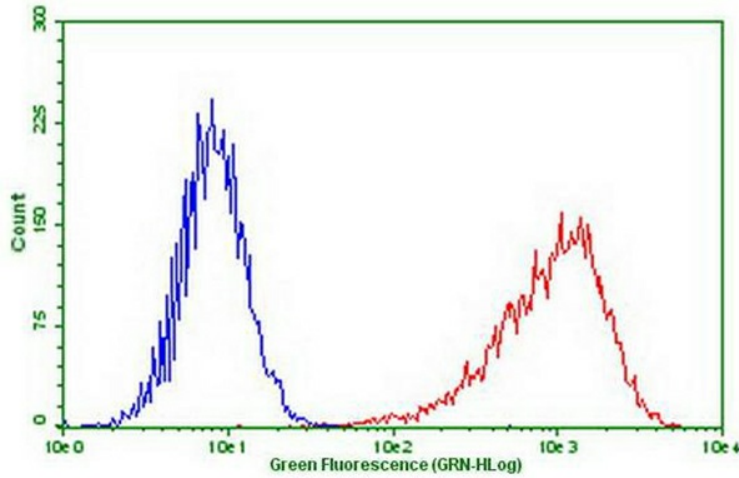
PD1 ELISA with 7B4 Capture ([CF807995]) and 21F5 Detection ([CF806927]) Antibodies. Substrate used: Recombinant Human PD1 ([TP310364])



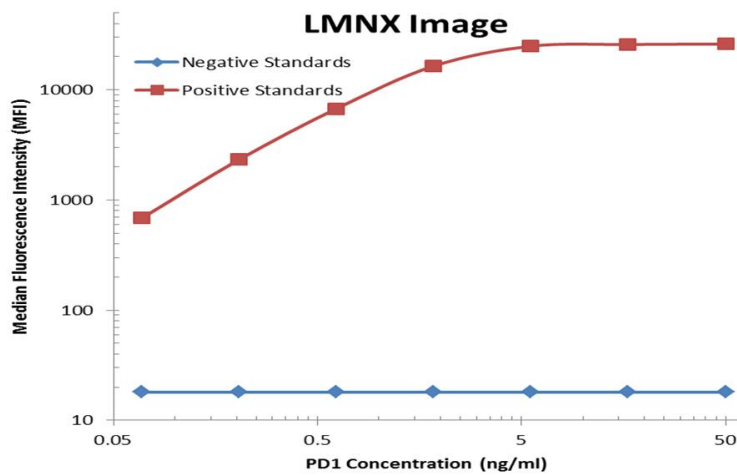
Immunofluorescent staining of PDCD1 ([RC210364])-stable-transfected HEK293T cells (left) labeling PDCD1 with mouse monoclonal antibody [TA806927] (green) and nucleus with Hoechst33342 (blue). HEK293T cells serve as negative control (right) (1:100).



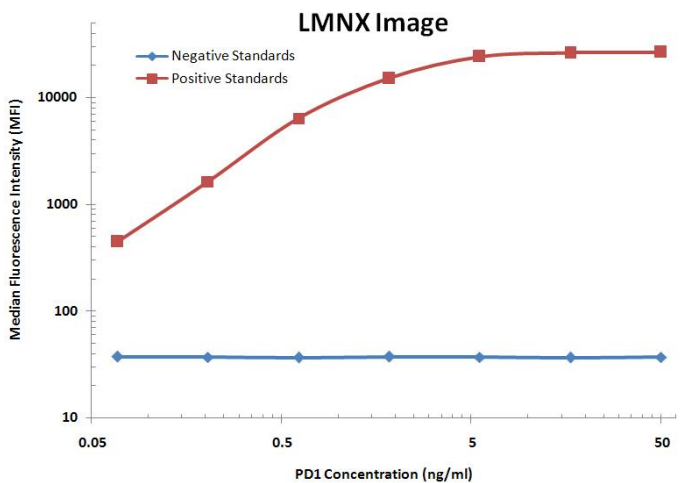
Immunocytochemistry staining of stable expression PD1 cells using anti-PDCD1 mouse monoclonal antibody ([TA806927]) (Left). The right is negative control. (1:100) (1:900)



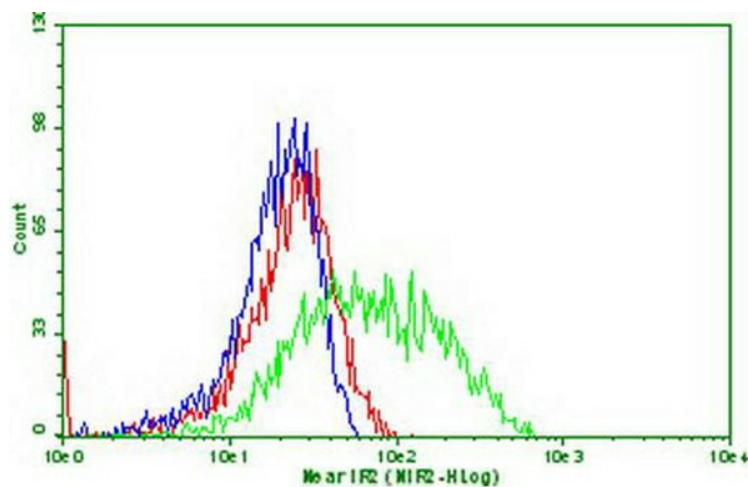
Flow cytometric Analysis of stable expression PD1 cells using anti-PDCD1 antibody ([TA806927]) (Red) compared to a nonspecific negative control antibody (Blue) (1:50).



PD1 Luminex ELISA with 1B11 Capture ([CF807867]) and 21F5 Detection ([CF806927]) Antibodies. Substrate used: Recombinant Human PD1 ([TP310364])



PD1 Luminex ELISA with 7B4 Capture ([CF807995]) and 21F5 Detection ([CF806927]) Antibodies. Substrate used: Recombinant Human PD1 ([TP310364])



Flow cytometric Analysis of stable expression PDL1 ([RC213071]) cells using anti-PDCD1 antibody ([TA806927]) (blue) or 0.3ug/ml PD1-Fc fusion protein ([TP700199]) (green) or both (red), and detected by anti-Fc (human) IgG-FITC (1:50).