

## Product datasheet for TA806917M

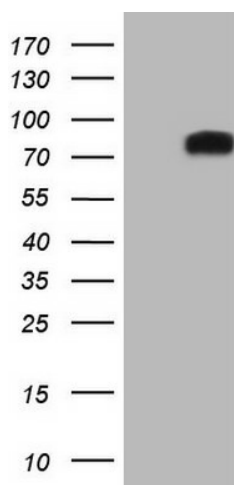
### Dishevelled 2 (DVL2) Mouse Monoclonal Antibody [Clone ID: OTI2E11]

#### Product data:

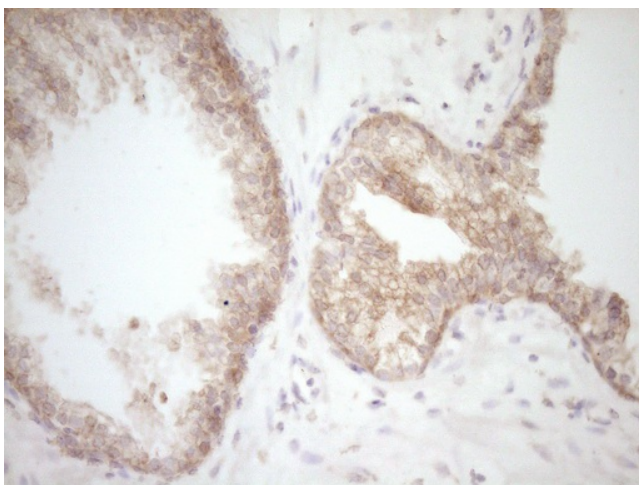
Product Type:	Primary Antibodies
Clone Name:	OTI2E11
Applications:	IHC, WB
Recommended Dilution:	WB 1:2000, IHC 1:150
Reactivity:	Human, Mouse, Rat
Host:	Mouse
Isotype:	IgG1
Clonality:	Monoclonal
Immunogen:	Human recombinant protein fragment corresponding to amino acids 1-320 of human DVL2(NP_004413) produced in E.coli.
Formulation:	PBS (pH 7.3) containing 1% BSA, 50% glycerol and 0.02% sodium azide.
Concentration:	1 mg/ml
Purification:	Purified from mouse ascites fluids or tissue culture supernatant by affinity chromatography (protein A/G)
Conjugation:	Unconjugated
Storage:	Store at -20°C as received.
Stability:	Stable for 12 months from date of receipt.
Predicted Protein Size:	78.8 kDa
Gene Name:	dishevelled segment polarity protein 2
Database Link:	<a href="#">NP_004413</a> <a href="#">Entrez Gene 13543 Mouse</a> <a href="#">Entrez Gene 1856 Human</a> <a href="#">O14641</a>
Background:	This gene encodes a member of the dishevelled (dsh) protein family. The vertebrate dsh proteins have approximately 40% amino acid sequence similarity with Drosophila dsh. This gene encodes a 90-kD protein that undergoes posttranslational phosphorylation to form a 95-kD cytoplasmic protein, which may play a role in the signal transduction pathway mediated by multiple Wnt proteins. The mechanisms of dishevelled function in Wnt signaling are likely to be conserved among metazoans. [provided by RefSeq, Jul 2008]


[View online »](#)

<b>Synonyms:</b>	dishevelled; dishevelled 2; dishevelled 2 (homologous to Drosophila dsh); DSH homolog 2; dsh homolog 2 (Drosophila); segment polarity protein dishevelled homolog DVL-2
<b>Protein Families:</b>	Druggable Genome, ES Cell Differentiation/IPS
<b>Protein Pathways:</b>	Basal cell carcinoma, Colorectal cancer, Melanogenesis, Notch signaling pathway, Pathways in cancer, Wnt signaling pathway

**Product images:**


HEK293T cells were transfected with the pCMV6-ENTRY control (Cat# [PS100001], Left lane) or pCMV6-ENTRY DVL2 (Cat# [RC202233], Right lane) cDNA for 48 hrs and lysed. Equivalent amounts of cell lysates (5 ug per lane) were separated by SDS-PAGE and immunoblotted with anti-DVL2 (Cat# [TA806917]). Positive lysates [LY401405] (100ug) and [LC401405] (20ug) can be purchased separately from OriGene.



Immunohistochemical staining of paraffin-embedded Carcinoma of Human prostate tissue using anti-DVL2 mouse monoclonal antibody. Heat-induced epitope retrieval by EDTA solution buffer pH 8.0 at 120°C for 3 min.