

## Product datasheet for **TA806909AM**

### Integrin beta 1 (ITGB1) Mouse Monoclonal Antibody (Biotin conjugated) [Clone ID: OTI2A3]

#### Product data:

Product Type:	Primary Antibodies
Clone Name:	OTI2A3
Applications:	FC, WB
Recommended Dilution:	WB 1:500
Reactivity:	Human, Mouse, Rat
Host:	Mouse
Isotype:	IgG1
Clonality:	Monoclonal
Immunogen:	Full length human recombinant protein of human ITGB1 (NP_002202) produced in HEK293T cell.
Formulation:	PBS (pH 7.3) containing 1% BSA, 50% glycerol and 0.02% sodium azide.
Concentration:	0.5 mg/ml
Purification:	Purified from mouse ascites fluids or tissue culture supernatant by affinity chromatography (protein A/G)
Conjugation:	Biotin
Storage:	Store at -20°C as received.
Stability:	Stable for 12 months from date of receipt.
Predicted Protein Size:	86.1 kDa
Gene Name:	integrin subunit beta 1
Database Link:	<a href="#">NP_002202</a> <a href="#">Entrez Gene 16412 Mouse</a> <a href="#">Entrez Gene 24511 Rat</a> <a href="#">Entrez Gene 3688 Human</a> <a href="#">P05556</a>
Synonyms:	CD29; FNRB; GPIIA; MDF2; MSK12; VLA-BETA; VLAB
Protein Families:	Druggable Genome, ES Cell Differentiation/IPS, Transmembrane

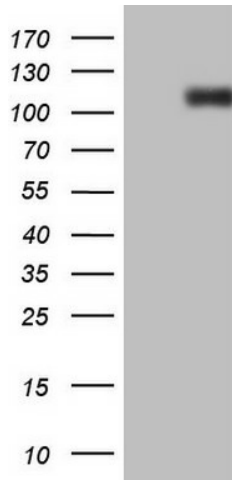


[View online »](#)

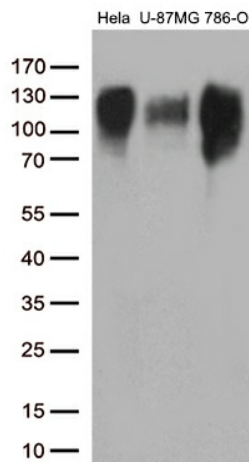
**Protein Pathways:**

Arrhythmogenic right ventricular cardiomyopathy (ARVC), Axon guidance, Cell adhesion molecules (CAMs), Dilated cardiomyopathy, ECM-receptor interaction, Focal adhesion, Hypertrophic cardiomyopathy (HCM), Leukocyte transendothelial migration, Pathogenic Escherichia coli infection, Pathways in cancer, Regulation of actin cytoskeleton, Small cell lung cancer

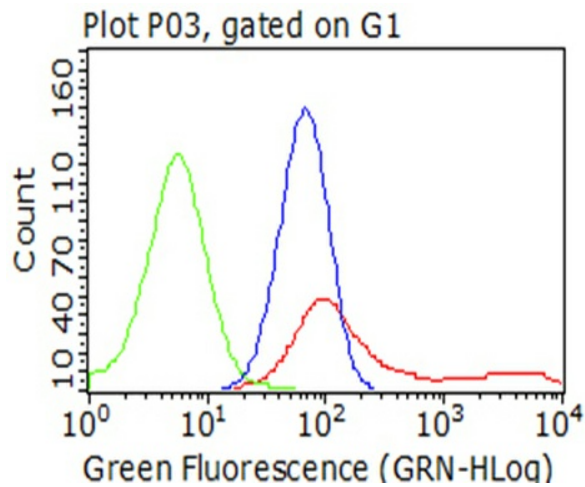
**Product images:**



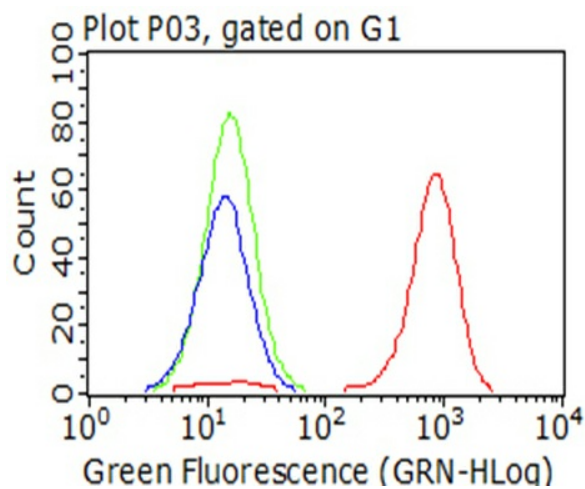
HEK293T cells were transfected with the pCMV6-ENTRY control (Left lane) or pCMV6-ENTRY ITGB1 ([RC203818], Right lane) cDNA for 48 hrs and lysed. Equivalent amounts of cell lysates (5 ug per lane) were separated by SDS-PAGE and immunoblotted with anti-ITGB1 (1:500).



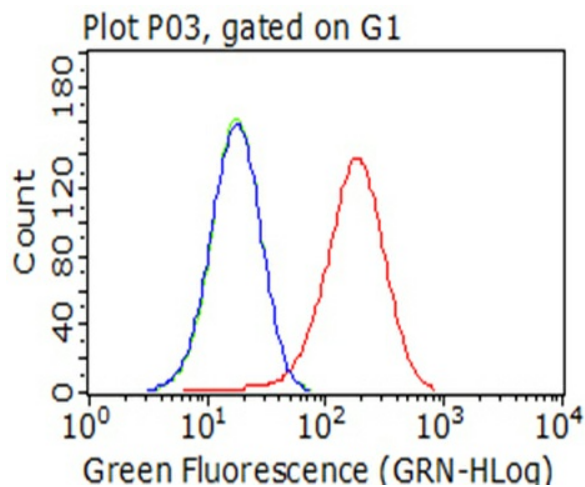
Western blot analysis of extracts (35ug) from 3 different cell lines by using anti-ITGB1 monoclonal antibody (1:500).



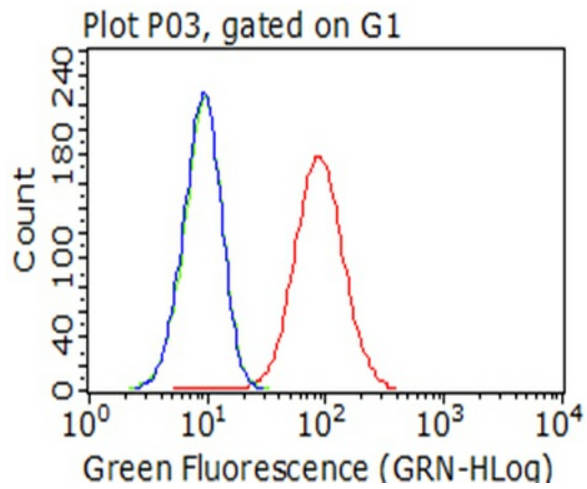
HEK293T cells transfected with either [RC203818] overexpress plasmid (Red), compared to an IgG isotype control, (Green) or empty vector control plasmid (Blue) were immunostained by anti-ITGB1 antibody ([TA806909]), and then analyzed by flow cytometry (1:100).



Flow cytometric Analysis of living HeLa cells, using anti-ITGB1 antibody ([TA806909]), (Red), compared to an IgG isotype control, (green), and negative control (PBS), (Blue) (1:100).



Flow cytometric Analysis of living U-87MG cells, using anti-ITGB1 antibody ([TA806909]), (Red), compared to an IgG isotype control, (green), and negative control (PBS), (Blue) (1:100).



Flow cytometric Analysis of living 786-O cells, using anti-ITGB1 antibody ([TA806909]), (Red), compared to an IgG isotype control, (green), and negative control (PBS), (Blue) (1:100).