

## Product datasheet for **TA806887BM**

### 5 Lipoxygenase (ALOX5) Mouse Monoclonal Antibody (HRP conjugated) [Clone ID: OTI1C1]

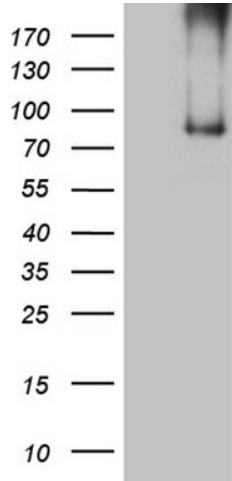
#### Product data:

Product Type:	Primary Antibodies
Clone Name:	OTI1C1
Applications:	IHC, WB
Recommended Dilution:	WB 1:500, IHC 1:2000
Reactivity:	Human, Mouse, Rat
Host:	Mouse
Isotype:	IgG1
Clonality:	Monoclonal
Immunogen:	Human recombinant protein fragment corresponding to amino acids 18-364 of human ALOX5 (NP_000689) produced in E.coli.
Formulation:	PBS (pH 7.3) containing 1% BSA, 50% glycerol.
Concentration:	0.5 mg/ml
Purification:	Purified from mouse ascites fluids or tissue culture supernatant by affinity chromatography (protein A/G)
Conjugation:	HRP
Storage:	Store at -20°C as received.
Stability:	Stable for 12 months from date of receipt.
Predicted Protein Size:	77.8 kDa
Gene Name:	arachidonate 5-lipoxygenase
Database Link:	<a href="#">NP_000689</a> <a href="#">Entrez Gene 11689 Mouse</a> <a href="#">Entrez Gene 25290 Rat</a> <a href="#">Entrez Gene 240 Human</a> <a href="#">P09917</a>
Synonyms:	5-LO; 5-LOX; 5LPG; LOG5
Protein Families:	Druggable Genome
Protein Pathways:	Arachidonic acid metabolism, Metabolic pathways

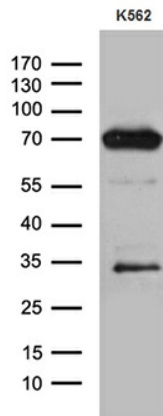


[View online »](#)

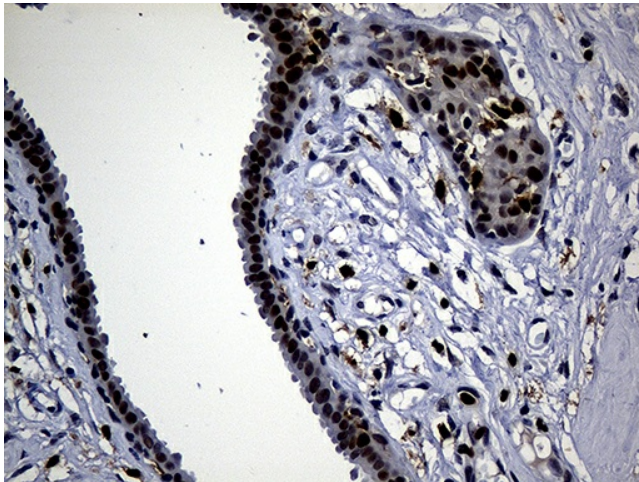
**Product images:**



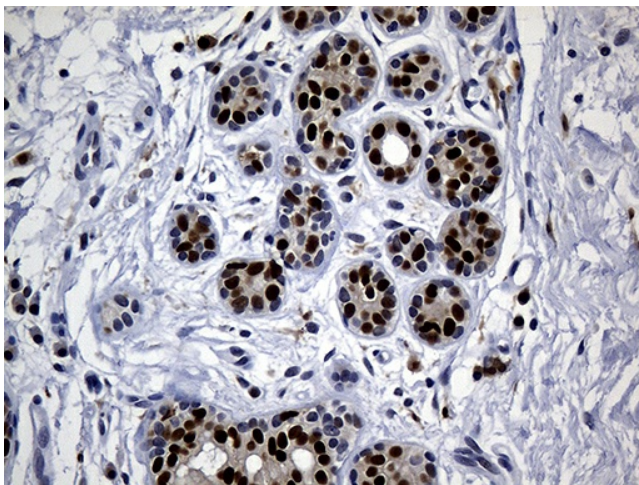
HEK293T cells were transfected with the pCMV6-ENTRY control (Left lane) or pCMV6-ENTRY ALOX5 ([RC217259], Right lane) cDNA for 48 hrs and lysed. Equivalent amounts of cell lysates (5 ug per lane) were separated by SDS-PAGE and immunoblotted with anti-ALOX5 (1:2000). Positive lysates [LY400234] (100ug) and [LC400234] (20ug) can be purchased separately from OriGene.



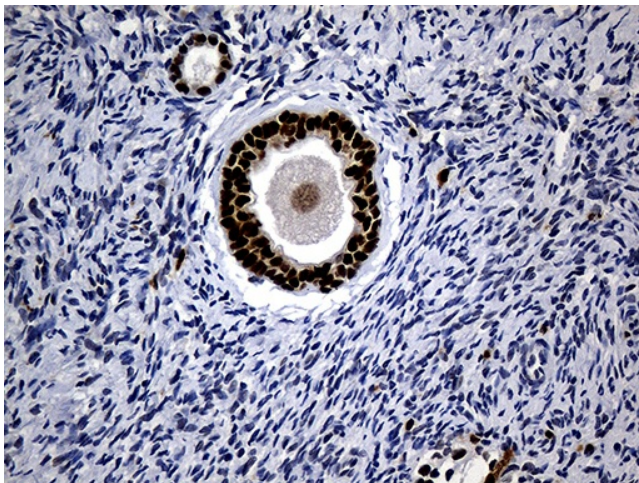
Western blot analysis of extracts (35ug) from K562 cell line by using anti-ALOX5 monoclonal antibody (1:500).



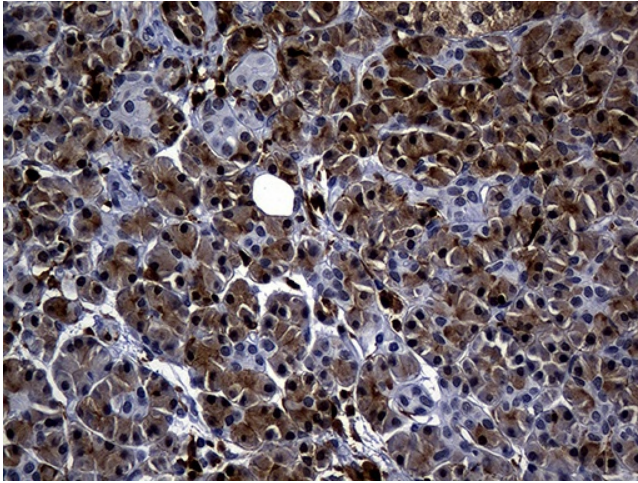
Immunohistochemical staining of paraffin-embedded Human breast tissue within the normal limits using anti-ALOX5 mouse monoclonal antibody. (Heat-induced epitope retrieval by 1mM EDTA in 10mM Tris buffer (pH8.5) at 120°C for 3min, [TA806887]) (1:2000)



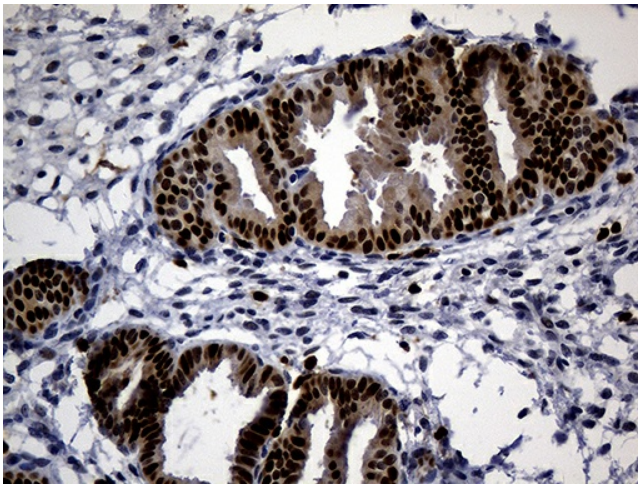
Immunohistochemical staining of paraffin-embedded Adenocarcinoma of Human breast tissue using anti-ALOX5 mouse monoclonal antibody. (Heat-induced epitope retrieval by 1mM EDTA in 10mM Tris buffer (pH8.5) at 120°C for 3min, [TA806887]) (1:2000)



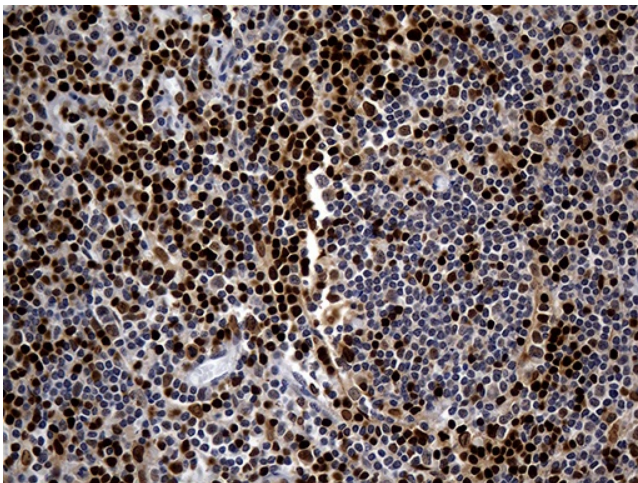
Immunohistochemical staining of paraffin-embedded Human Ovary tissue within the normal limits using anti-ALOX5 mouse monoclonal antibody. (Heat-induced epitope retrieval by 1mM EDTA in 10mM Tris buffer (pH8.5) at 120°C for 3min, [TA806887]) (1:2000)



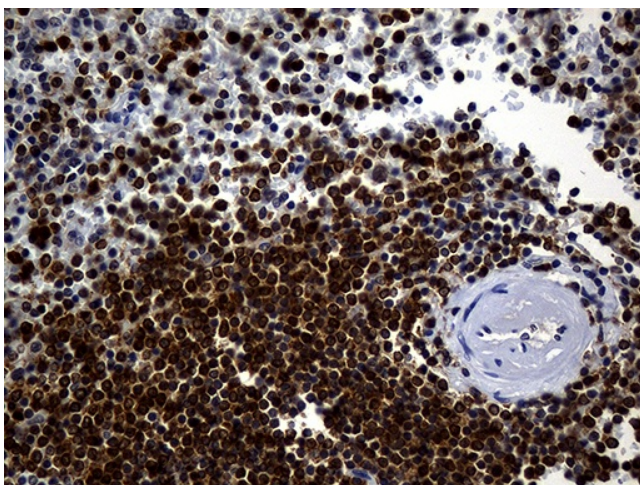
Immunohistochemical staining of paraffin-embedded Human pancreas tissue within the normal limits using anti-ALOX5 mouse monoclonal antibody. (Heat-induced epitope retrieval by 1mM EDTA in 10mM Tris buffer (pH8.5) at 120°C for 3min, [TA806887]) (1:2000)



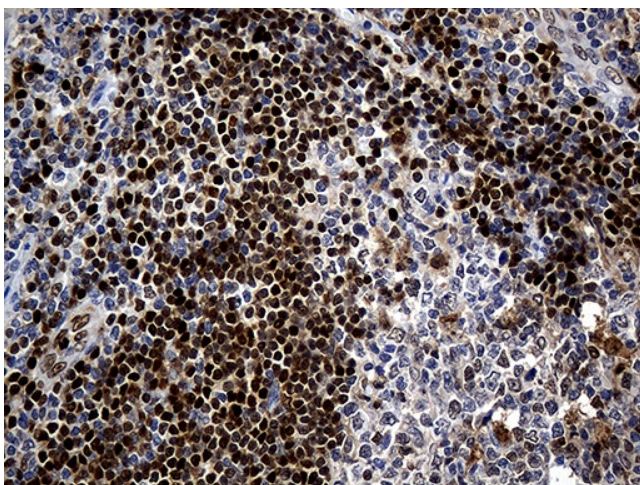
Immunohistochemical staining of paraffin-embedded Human endometrium tissue within the normal limits using anti-ALOX5 mouse monoclonal antibody. (Heat-induced epitope retrieval by 1mM EDTA in 10mM Tris buffer (pH8.5) at 120°C for 3min, [TA806887]) (1:2000)



Immunohistochemical staining of paraffin-embedded Human tonsil within the normal limits using anti-ALOX5 mouse monoclonal antibody. (Heat-induced epitope retrieval by 1mM EDTA in 10mM Tris buffer (pH8.5) at 120°C for 3min, [TA806887]) (1:2000)



Immunohistochemical staining of paraffin-embedded Human spleen tissue within the normal limits using anti-ALOX5 mouse monoclonal antibody. (Heat-induced epitope retrieval by Tris-EDTA (1:2000))



Immunohistochemical staining of paraffin-embedded Human appendix tissue within the normal limits using anti-ALOX5 mouse monoclonal antibody. (Heat-induced epitope retrieval by Tris-EDTA (1:2000))