

Product datasheet for **TA806885AM**

5 Lipoxygenase (ALOX5) Mouse Monoclonal Antibody (Biotin conjugated) [Clone ID: OTI1A1]

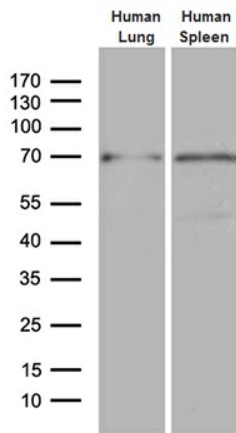
Product data:

Product Type:	Primary Antibodies
Clone Name:	OTI1A1
Applications:	IHC, WB
Recommended Dilution:	WB 1:500, IHC 1:500
Reactivity:	Human, Mouse, Rat
Host:	Mouse
Isotype:	IgG1
Clonality:	Monoclonal
Immunogen:	Human recombinant protein fragment corresponding to amino acids 18-364 of human ALOX5 (NP_000689) produced in E.coli.
Formulation:	PBS (pH 7.3) containing 1% BSA, 50% glycerol and 0.02% sodium azide.
Concentration:	0.5 mg/ml
Purification:	Purified from mouse ascites fluids or tissue culture supernatant by affinity chromatography (protein A/G)
Conjugation:	Biotin
Storage:	Store at -20°C as received.
Stability:	Stable for 12 months from date of receipt.
Predicted Protein Size:	77.8 kDa
Gene Name:	arachidonate 5-lipoxygenase
Database Link:	NP_000689 Entrez Gene 11689 Mouse Entrez Gene 25290 Rat Entrez Gene 240 Human P09917
Synonyms:	5-LO; 5-LOX; 5LPG; LOG5
Protein Families:	Druggable Genome
Protein Pathways:	Arachidonic acid metabolism, Metabolic pathways

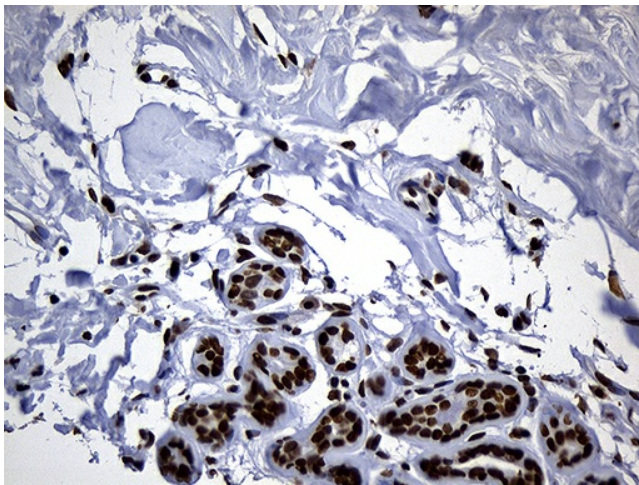


[View online »](#)

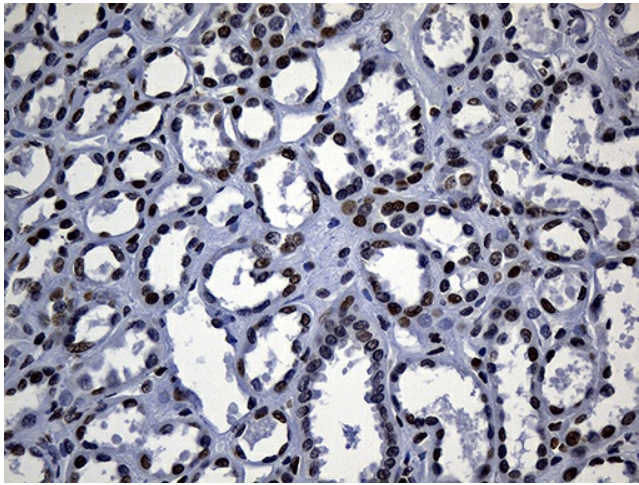
Product images:



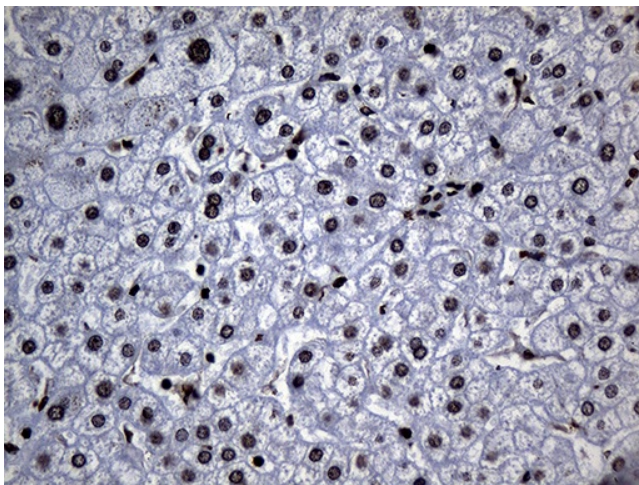
Western blot analysis of extracts (35ug) from 2 different tissue lysates by using anti-ALOX5 monoclonal antibody (1:500).



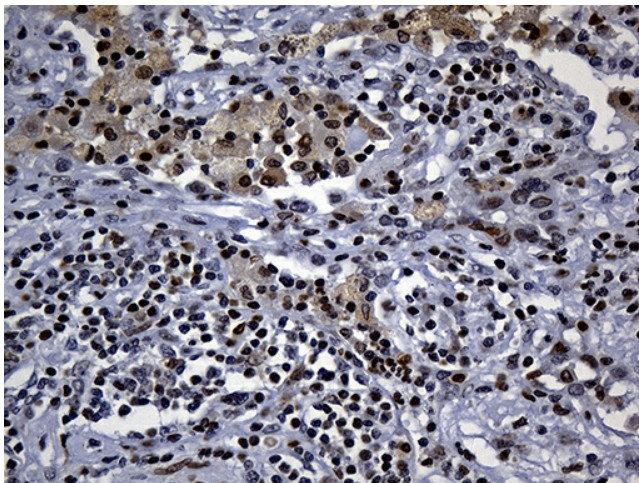
Immunohistochemical staining of paraffin-embedded Human breast tissue within the normal limits using anti-ALOX5 mouse monoclonal antibody. (Heat-induced epitope retrieval by 1mM EDTA in 10mM Tris buffer (pH8.5) at 120°C for 3min, [TA806885]) (1:500)



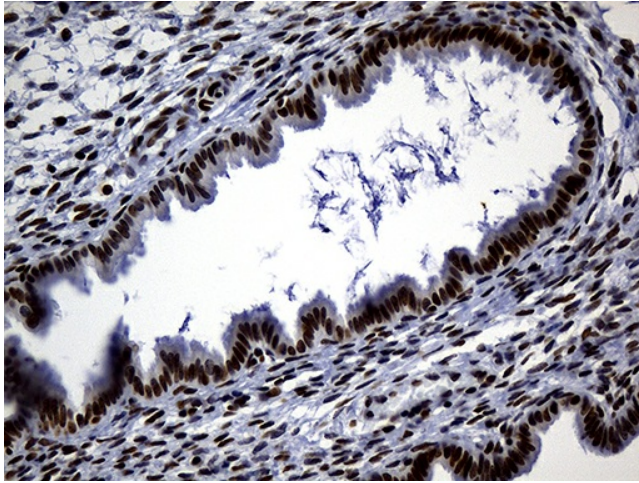
Immunohistochemical staining of paraffin-embedded Human Kidney tissue within the normal limits using anti-ALOX5 mouse monoclonal antibody. (Heat-induced epitope retrieval by 1mM EDTA in 10mM Tris buffer (pH8.5) at 120°C for 3min, [TA806885]) (1:500)



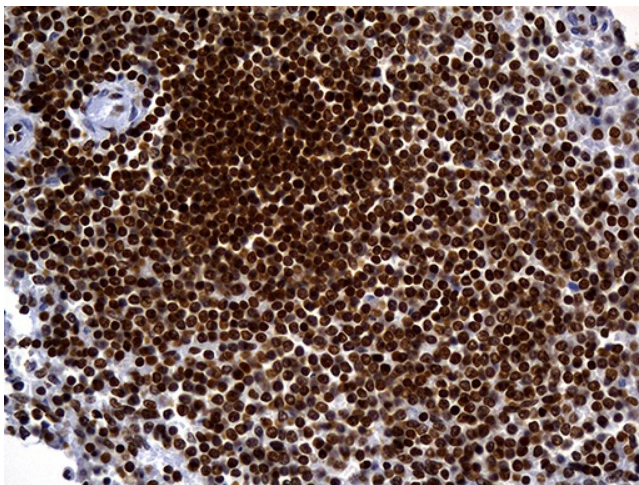
Immunohistochemical staining of paraffin-embedded Human liver tissue within the normal limits using anti-ALOX5 mouse monoclonal antibody. (Heat-induced epitope retrieval by 1mM EDTA in 10mM Tris buffer (pH8.5) at 120°C for 3min, [TA806885]) (1:500)



Immunohistochemical staining of paraffin-embedded Carcinoma of Human lung tissue using anti-ALOX5 mouse monoclonal antibody. (Heat-induced epitope retrieval by 1mM EDTA in 10mM Tris buffer (pH8.5) at 120°C for 3min, [TA806885]) (1:500)



Immunohistochemical staining of paraffin-embedded Human endometrium tissue within the normal limits using anti-ALOX5 mouse monoclonal antibody. (Heat-induced epitope retrieval by 1mM EDTA in 10mM Tris buffer (pH8.5) at 120°C for 3min, [TA806885]) (1:500)



Immunohistochemical staining of paraffin-embedded Human lymphoma tissue using anti-ALOX5 mouse monoclonal antibody. (Heat-induced epitope retrieval by 1mM EDTA in 10mM Tris buffer (pH8.5) at 120°C for 3min, [TA806885]) (1:500)