

Product datasheet for **TA806874M**

Adrenomedullin (ADM) Mouse Monoclonal Antibody [Clone ID: OTI8A1]

Product data:

Product Type:	Primary Antibodies
Clone Name:	OTI8A1
Applications:	IHC
Recommended Dilution:	IHC 1:250
Reactivity:	Human
Host:	Mouse
Isotype:	IgG2b
Clonality:	Monoclonal
Immunogen:	Human recombinant protein fragment corresponding to amino acids 22-146 of human ADM(NP_001115) produced in E.coli.
Formulation:	PBS (pH 7.3) containing 1% BSA, 50% glycerol and 0.02% sodium azide.
Concentration:	1 mg/ml
Purification:	Purified from mouse ascites fluids or tissue culture supernatant by affinity chromatography (protein A/G)
Conjugation:	Unconjugated
Storage:	Store at -20°C as received.
Stability:	Stable for 12 months from date of receipt.
Predicted Protein Size:	20.2 kDa
Gene Name:	adrenomedullin
Database Link:	NP_001115 Entrez Gene 133 Human P35318

[View online »](#)

Background:

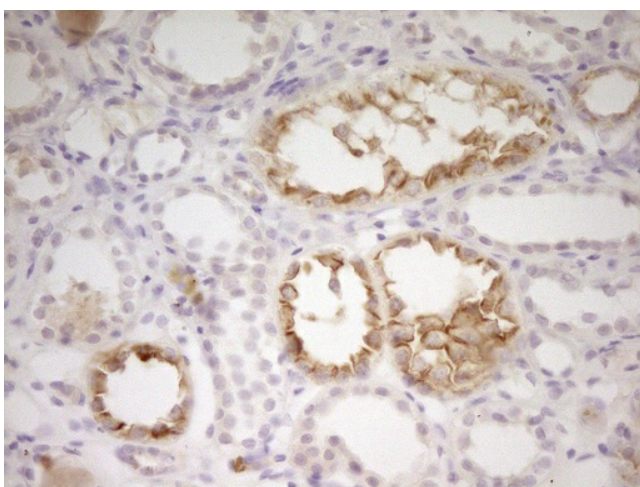
Adrenomedullin, a hypotensive peptide found in human pheochromocytoma, consists of 52 amino acids, has 1 intramolecular disulfide bond, and shows a slight homology with the calcitonin gene-related peptide. It may function as a hormone in circulation control because it is found in blood in a considerable concentration. The precursor, called preproadrenomedullin, is 185 amino acids long. By RNA-blot analysis, human adrenomedullin mRNA was found to be highly expressed in several tissues. Genomic ADM DNA consists of 4 exons and 3 introns, with the 5-prime flanking region containing TATA, CAAT, and GC boxes. There are also multiple binding sites for activator protein-2 and a cAMP-regulated enhancer element. [provided by RefSeq, Jul 2008]

Synonyms:

AM; PAMP

Protein Families:

Druggable Genome, Secreted Protein

Product images:


Immunohistochemical staining of paraffin-embedded Human Kidney tissue within the normal limits using anti-ADM mouse monoclonal antibody. Heat-induced epitope retrieval by EDTA solution buffer pH 8.0 at 120°C for 3 min.