

Product datasheet for **TA806863BM**

c Fos (FOS) Mouse Monoclonal Antibody (HRP conjugated) [Clone ID: OT11E3]

Product data:

Product Type:	Primary Antibodies
Clone Name:	OT11E3
Applications:	IHC, WB
Recommended Dilution:	WB 1:2000, IHC 1:200
Reactivity:	Human, Mouse, Rat
Host:	Mouse
Isotype:	IgG1
Clonality:	Monoclonal
Immunogen:	Full length human recombinant protein of human FOS (NP_005243) produced in E.coli.
Formulation:	PBS (pH 7.3) containing 1% BSA, 50% glycerol.
Concentration:	0.5 mg/ml
Purification:	Purified from mouse ascites fluids or tissue culture supernatant by affinity chromatography (protein A/G)
Conjugation:	HRP
Storage:	Store at -20°C as received.
Stability:	Stable for 12 months from date of receipt.
Predicted Protein Size:	40.5 kDa
Gene Name:	Fos proto-oncogene, AP-1 transcription factor subunit
Database Link:	NP_005243 Entrez Gene 14281 Mouse Entrez Gene 314322 Rat Entrez Gene 2353 Human P01100
Background:	The Fos gene family consists of 4 members: FOS, FOSB, FOSL1, and FOSL2. These genes encode leucine zipper proteins that can dimerize with proteins of the JUN family, thereby forming the transcription factor complex AP-1. As such, the FOS proteins have been implicated as regulators of cell proliferation, differentiation, and transformation. In some cases, expression of the FOS gene has also been associated with apoptotic cell death. [provided by RefSeq, Jul 2008]



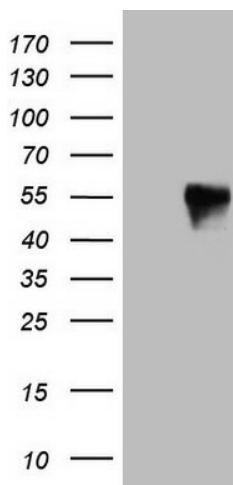
[View online »](#)

Synonyms: AP-1; C-FOS; p55

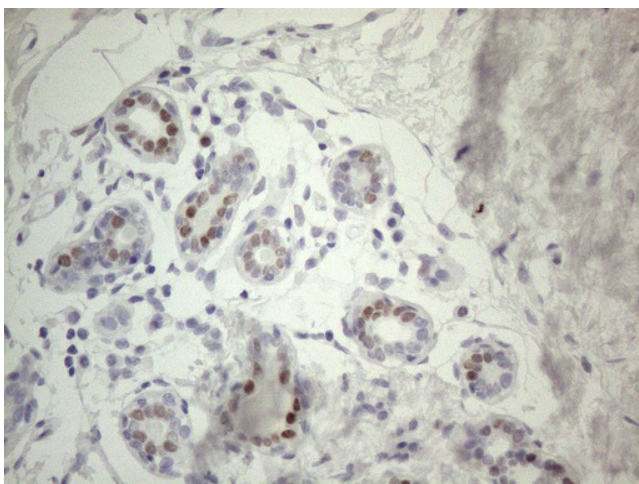
Protein Families: Druggable Genome, Transcription Factors

Protein Pathways: B cell receptor signaling pathway, Colorectal cancer, MAPK signaling pathway, Pathways in cancer, T cell receptor signaling pathway, Toll-like receptor signaling pathway

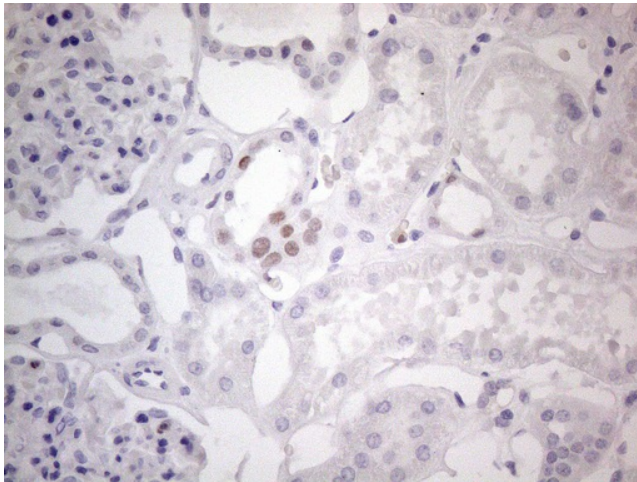
Product images:



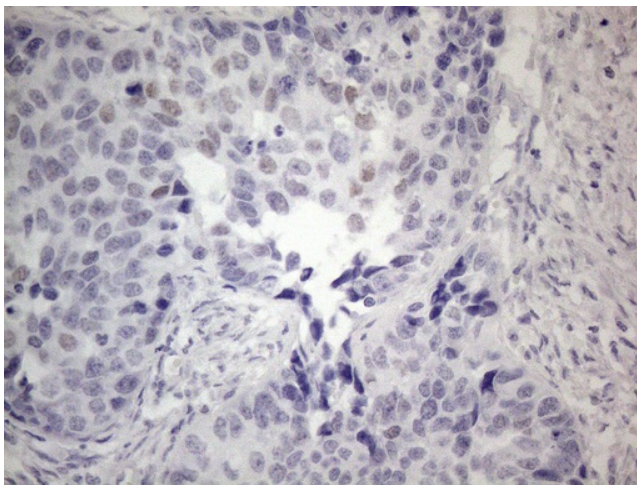
HEK293T cells were transfected with the pCMV6-ENTRY control (Left lane) or pCMV6-ENTRY FOS ([RC202597], Right lane) cDNA for 48 hrs and lysed. Equivalent amounts of cell lysates (5 ug per lane) were separated by SDS-PAGE and immunoblotted with anti-FOS (1:2000). Positive lysates [LY401614] (100ug) and [LC401614] (20ug) can be purchased separately from OriGene.



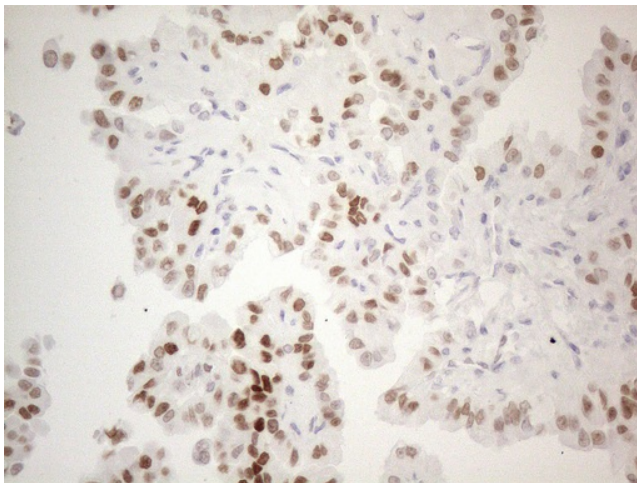
Immunohistochemical staining of paraffin-embedded Human breast tissue within the normal limits using anti-FOS mouse monoclonal antibody. (Heat-induced epitope retrieval by 1mM EDTA in 10mM Tris buffer (pH8.5) at 120°C for 3min, [TA806863]) (1:150) (1:200)



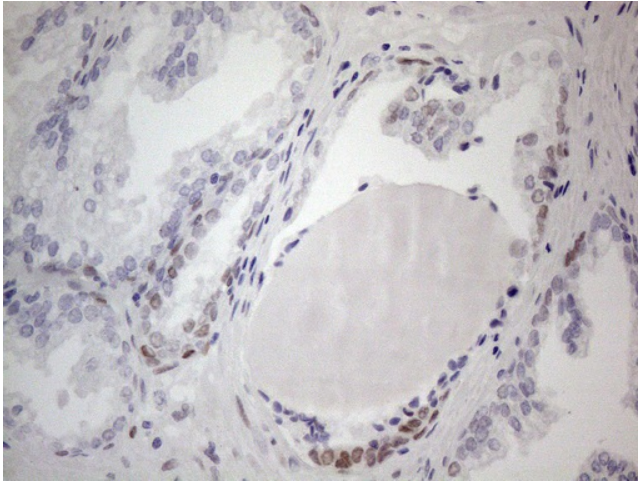
Immunohistochemical staining of paraffin-embedded Human Kidney tissue within the normal limits using anti-FOS mouse monoclonal antibody. (Heat-induced epitope retrieval by 1mM EDTA in 10mM Tris buffer (pH8.5) at 120°C for 3min, [TA806863]) (1:150) (1:200)



Immunohistochemical staining of paraffin-embedded Carcinoma of Human kidney tissue using anti-FOS mouse monoclonal antibody. (Heat-induced epitope retrieval by 1mM EDTA in 10mM Tris buffer (pH8.5) at 120°C for 3min, [TA806863]) (1:150) (1:200)



Immunohistochemical staining of paraffin-embedded Carcinoma of Human thyroid tissue using anti-FOS mouse monoclonal antibody. (Heat-induced epitope retrieval by 1mM EDTA in 10mM Tris buffer (pH8.5) at 120°C for 3min, [TA806863]) (1:150) (1:200)



Immunohistochemical staining of paraffin-embedded Carcinoma of Human prostate tissue using anti-FOS mouse monoclonal antibody. (Heat-induced epitope retrieval by 1mM EDTA in 10mM Tris buffer (pH8.5) at 120°C for 3min, [TA806863]) (1:150) (1:200)