

## Product datasheet for **TA806841S**

### ROR1 Mouse Monoclonal Antibody [Clone ID: OTI3F8]

#### Product data:

Product Type:	Primary Antibodies
Clone Name:	OTI3F8
Applications:	IHC, WB
Recommended Dilution:	WB 1:500, IHC 1:2000
Reactivity:	Human, Rat
Host:	Mouse
Isotype:	IgG1
Clonality:	Monoclonal
Immunogen:	Full length human recombinant protein of human ROR1 (NP_005003) produced in HEK293T cell.
Formulation:	PBS (pH 7.3) containing 1% BSA, 50% glycerol and 0.02% sodium azide.
Concentration:	1 mg/ml
Purification:	Purified from mouse ascites fluids or tissue culture supernatant by affinity chromatography (protein A/G)
Conjugation:	Unconjugated
Storage:	Shipped at -20°C or with ice packs, Upon delivery store at -20°C. Dilute in PBS(pH7.3) if necessary. Stable for 12 months from date of receipt. Avoid repeated freeze-thaws.
Stability:	Stable for 12 months from date of receipt.
Predicted Protein Size:	104.1 kDa
Gene Name:	receptor tyrosine kinase-like orphan receptor 1
Database Link:	<a href="#">NP_005003</a> <a href="#">Entrez Gene 362550 Rat</a> <a href="#">Entrez Gene 4919 Human</a> <a href="#">Q01973</a>



[View online »](#)

**Background:**

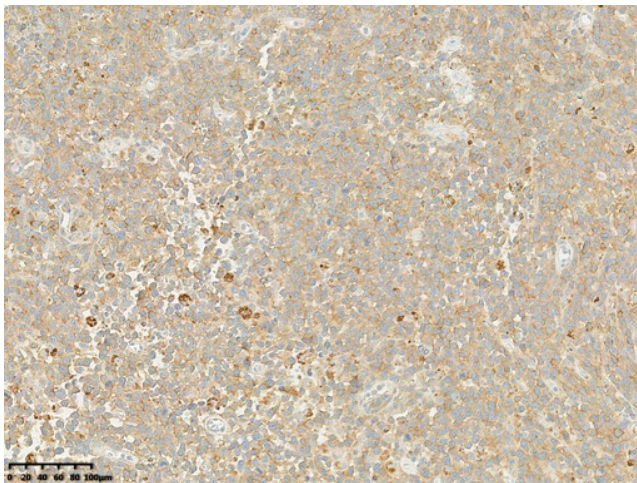
This gene encodes a receptor tyrosine kinase-like orphan receptor that modulates neurite growth in the central nervous system. The encoded protein is a glycosylated type I membrane protein that belongs to the ROR subfamily of cell surface receptors. It is a pseudokinase that lacks catalytic activity and may interact with the non-canonical Wnt signalling pathway. This gene is highly expressed during early embryonic development but expressed at very low levels in adult tissues. Increased expression of this gene is associated with B-cell chronic lymphocytic leukaemia. Alternative splicing results in multiple transcript variants encoding different isoforms. [provided by RefSeq, Jun 2012]

**Synonyms:**

dj537F10.1; NTRKR1

**Protein Families:**

Druggable Genome, Protein Kinase, Transmembrane

**Product images:**


IHC staining of FFPE human lymphoma tissue using anti-ROR1 mouse monoclonal antibody ([TA806841]) and Polink-2 HRP polymer detection kit ([D22-110]). Heat-induced epitope retrieval by EDTA solution buffer pH 8.0 ([B04C-100]) at 120°C for 3 min. The brown stain indicates positive stain, blue is the counter stain.

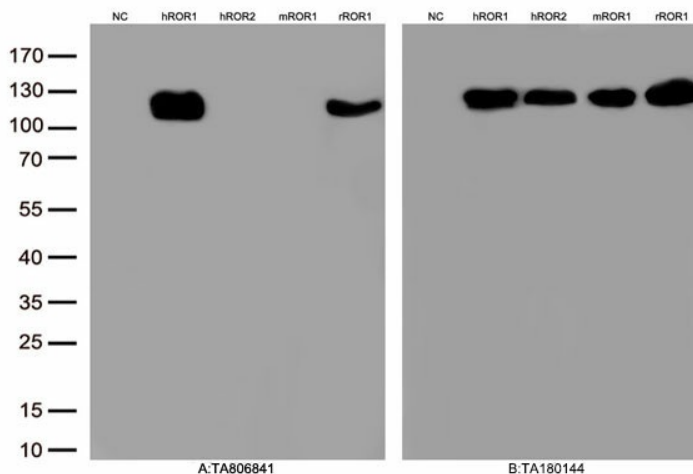


Figure A, Western blot analysis of overexpressed lysates(15ug per lane) from HEK293T cells transfected with empty plasmid ([PS100001], NC), human ROR1 plasmid ([RC214967], hROR1), human ROR2 plasmid ([RC215640], hROR2), mouse ROR1 plasmid ([MR224803], mROR1),rat ROR1 plasmid ([RR214709], rROR1), using anti-ROR1 antibody [TA806841] (1:500). Figure B, Western blot analysis of the same samples as figure A with anti-DDK antibody ([TA180144], 1:1000)