

Product datasheet for TA806826

ROR1 Mouse Monoclonal Antibody [Clone ID: OTI3D11]

Product data:

Product Type:	Primary Antibodies
Clone Name:	OTI3D11
Applications:	WB
Recommended Dilution:	WB 1:2000
Reactivity:	Human
Host:	Mouse
Isotype:	IgG1
Clonality:	Monoclonal
Immunogen:	Full length human recombinant protein of human ROR1 (NP_005003) produced in HEK293T cell.
Formulation:	PBS (pH 7.3) containing 1% BSA, 50% glycerol and 0.02% sodium azide.
Concentration:	1 mg/ml
Purification:	Purified from mouse ascites fluids or tissue culture supernatant by affinity chromatography (protein A/G)
Conjugation:	Unconjugated
Storage:	Store at -20°C as received.
Stability:	Stable for 12 months from date of receipt.
Predicted Protein Size:	104.1 kDa
Gene Name:	receptor tyrosine kinase-like orphan receptor 1
Database Link:	NP_005003 Entrez Gene 4919 Human Q01973



Background:

This gene encodes a receptor tyrosine kinase-like orphan receptor that modulates neurite growth in the central nervous system. The encoded protein is a glycosylated type I membrane protein that belongs to the ROR subfamily of cell surface receptors. It is a pseudokinase that lacks catalytic activity and may interact with the non-canonical Wnt signalling pathway. This gene is highly expressed during early embryonic development but expressed at very low levels in adult tissues. Increased expression of this gene is associated with B-cell chronic lymphocytic leukaemia. Alternative splicing results in multiple transcript variants encoding different isoforms. [provided by RefSeq, Jun

Synonyms:

dJ537F10.1; NTRKR1

Note:

WB application: Only overexpression results are guaranteed, not endogenous

Protein Families:

Druggable Genome, Protein Kinase, Transmembrane

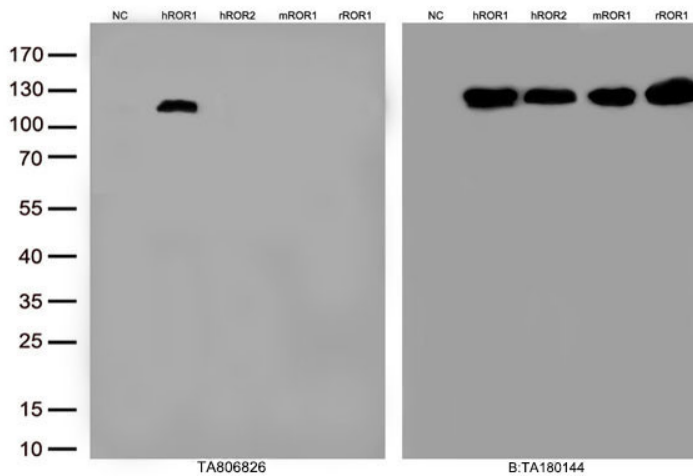
Product images:

Figure A, Western blot analysis of overexpressed lysates (15ug per lane) from HEK293T cells transfected with empty plasmid ([PS100001], lane 1), human ROR1 plasmid ([RC214967], lane 2), mouse ROR1 plasmid ([MR224803], lane 3), rat ROR1 plasmid ([RR214709], lane 4), using anti-ROR1 antibody TA806826 (1:500). Figure B, Western blot analysis of the same samples as figure A with anti-DDK antibody ([TA180144], 1:1000)