

## Product datasheet for **TA806813S**

### PD1 (PDCD1) Mouse Monoclonal Antibody [Clone ID: OTI12D11]

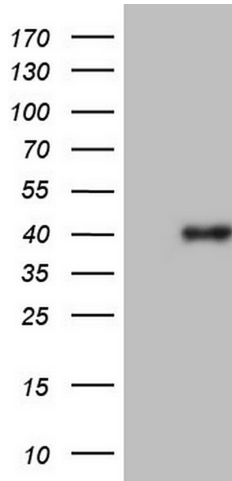
#### Product data:

Product Type:	Primary Antibodies
Clone Name:	OTI12D11
Applications:	FC, IF, WB
Recommended Dilution:	WB 1:2000, IF 1:100~900, FLOW 1:50
Reactivity:	Human
Host:	Mouse
Isotype:	IgG2a
Clonality:	Monoclonal
Immunogen:	Full length human recombinant protein of human PDCD1 (NP_005009) produced in HEK293T cell.
Formulation:	PBS (pH 7.3) containing 1% BSA, 50% glycerol and 0.02% sodium azide.
Concentration:	1 mg/ml
Purification:	Purified from mouse ascites fluids or tissue culture supernatant by affinity chromatography (protein A/G)
Conjugation:	Unconjugated
Storage:	Store at -20°C as received.
Stability:	Stable for 12 months from date of receipt.
Predicted Protein Size:	29.2 kDa
Gene Name:	programmed cell death 1
Database Link:	<a href="#">NP_005009</a> <a href="#">Entrez Gene 5133 Human</a> <a href="#">Q15116</a>
Synonyms:	CD279; hPD-1; hPD-I; hSLE1; PD-1; PD1; SLEB2
Protein Families:	Druggable Genome, Transmembrane
Protein Pathways:	Cell adhesion molecules (CAMs), T cell receptor signaling pathway



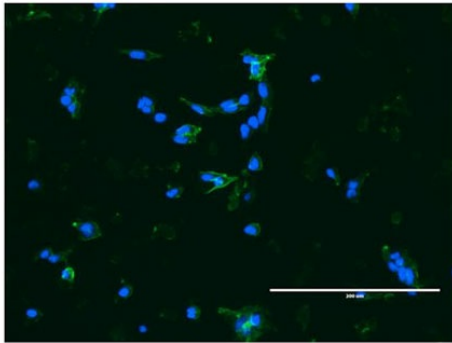
[View online »](#)

**Product images:**

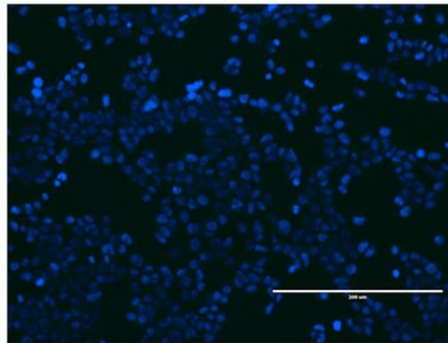


HEK293T cells were transfected with the pCMV6-ENTRY control (Left lane) or pCMV6-ENTRY PDCD1 ([RC210364], Right lane) cDNA for 48 hrs and lysed. Equivalent amounts of cell lysates (5 ug per lane) were separated by SDS-PAGE and immunoblotted with anti-PDCD1. Positive lysates [LY401555] (100ug) and [LC401555] (20ug) can be purchased separately from OriGene.

**PD1 cell line**

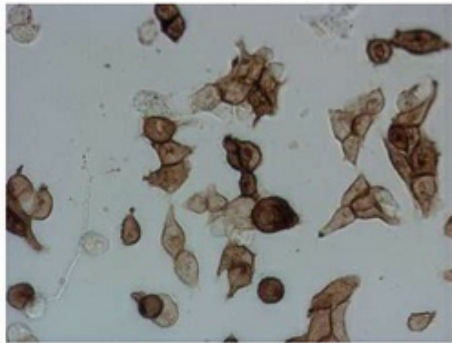


**293T cell line**

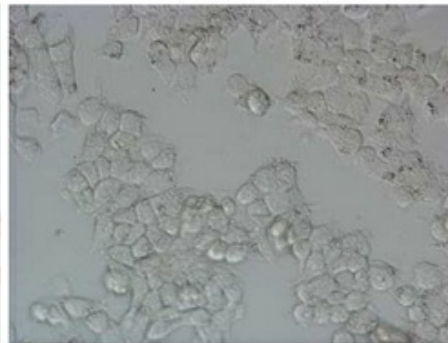


Immunofluorescent staining of PDCD1 ([RC210364])-stable-transfected HEK293T cells (left) labeling PDCD1 with mouse monoclonal antibody [TA806813] (green) and nucleus with Hoechst33342 (blue). HEK293T cells serve as negative control (right) (1:100).

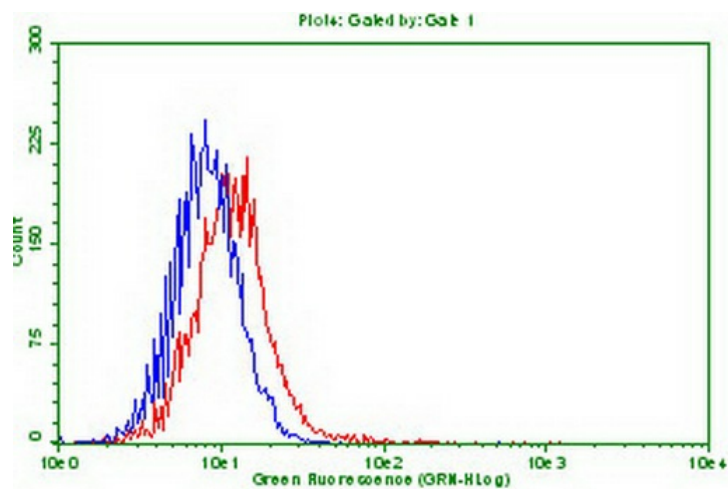
**PD1 cell line**



**293T cell line**



Immunocytochemistry staining of stable expression PD1 cells using anti-PDCD1 mouse monoclonal antibody ([TA806813]) (Left). The right is negative control. (1:100) (1:900)



Flow cytometric Analysis of stable expression PD1 cells using anti-PDCD1 antibody ([TA806813]) (Red) compared to a nonspecific negative control antibody (Blue) (1:50).