

Product datasheet for **TA806809M**

PD1 (PDCD1) Mouse Monoclonal Antibody [Clone ID: OTI2D10]

Product data:

Product Type:	Primary Antibodies
Clone Name:	OTI2D10
Applications:	IHC, WB
Recommended Dilution:	IHC 1:150
Reactivity:	Human
Host:	Mouse
Isotype:	IgG2b
Clonality:	Monoclonal
Immunogen:	Full length human recombinant protein of human PDCD1 (NP_005009) produced in HEK293T cell.
Formulation:	PBS (pH 7.3) containing 1% BSA, 50% glycerol and 0.02% sodium azide.
Concentration:	1 mg/ml
Purification:	Purified from mouse ascites fluids or tissue culture supernatant by affinity chromatography (protein A/G)
Conjugation:	Unconjugated
Storage:	Store at -20°C as received.
Stability:	Stable for 12 months from date of receipt.
Predicted Protein Size:	29.2 kDa
Gene Name:	programmed cell death 1
Database Link:	NP_005009 Entrez Gene 5133 Human Q15116

[View online »](#)

Background:

This gene encodes a cell surface membrane protein of the immunoglobulin superfamily. This protein is expressed in pro-B-cells and is thought to play a role in their differentiation. In mice, expression of this gene is induced in the thymus when anti-CD3 antibodies are injected and large numbers of thymocytes undergo apoptosis. Mice deficient for this gene bred on a BALB/c background developed dilated cardiomyopathy and died from congestive heart failure. These studies suggest that this gene product may also be important in T cell function and contribute to the prevention of autoimmune diseases. [provided by RefSeq, Jul 2008]

Synonyms:

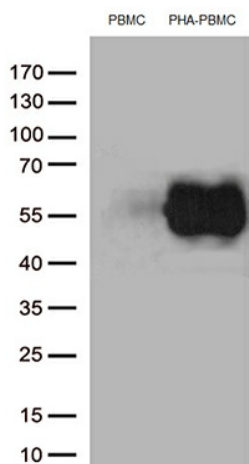
CD279; hPD-1; hPD-I; hSLE1; PD-1; PD1; SLEB2

Protein Families:

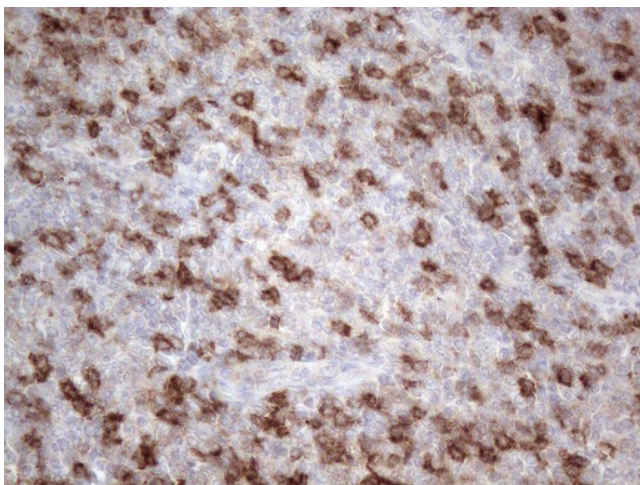
Druggable Genome, Transmembrane

Protein Pathways:

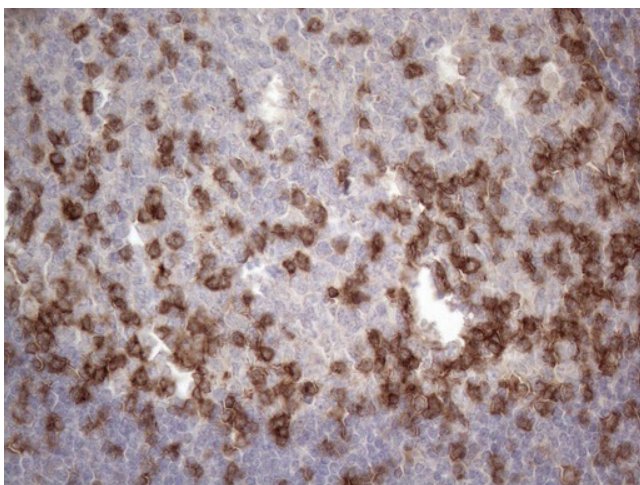
Cell adhesion molecules (CAMs), T cell receptor signaling pathway

Product images:


Western blot analysis of extracts (35ug) from PBMCs and PHA-stimulated-PBMCs by using anti-PDCD1 monoclonal antibody (1:250).



Immunohistochemical staining of paraffin-embedded Human lymphoma tissue using anti-PDCD1 mouse monoclonal antibody. Heat-induced epitope retrieval by EDTA solution buffer pH 8.0 at 120°C for 3 min.



Immunohistochemical staining of paraffin-embedded Human tonsil within the normal limits using anti-PDCD1 mouse monoclonal antibody. Heat-induced epitope retrieval by EDTA solution buffer pH 8.0 at 120°C for 3 min.