

Product datasheet for **TA806807M**

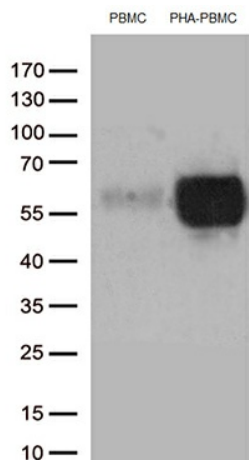
PD1 (PDCD1) Mouse Monoclonal Antibody [Clone ID: OTI3C6]

Product data:

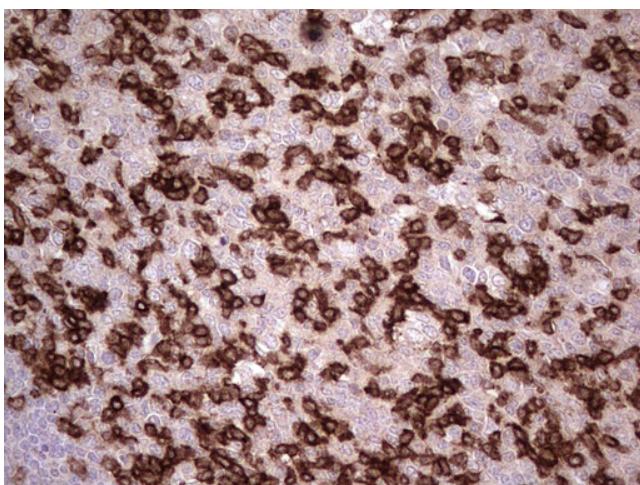
| | |
|-------------------------|---|
| Product Type: | Primary Antibodies |
| Clone Name: | OTI3C6 |
| Applications: | FC, IHC, WB |
| Recommended Dilution: | IHC 1:150, FLOW 1:50 |
| Reactivity: | Human |
| Host: | Mouse |
| Isotype: | IgG2a |
| Clonality: | Monoclonal |
| Immunogen: | Full length human recombinant protein of human PDCD1 (NP_005009) produced in HEK293T cell. |
| Formulation: | PBS (pH 7.3) containing 1% BSA, 50% glycerol and 0.02% sodium azide. |
| Concentration: | 1 mg/ml |
| Purification: | Purified from mouse ascites fluids or tissue culture supernatant by affinity chromatography (protein A/G) |
| Conjugation: | Unconjugated |
| Storage: | Store at -20°C as received. |
| Stability: | Stable for 12 months from date of receipt. |
| Predicted Protein Size: | 29.2 kDa |
| Gene Name: | programmed cell death 1 |
| Database Link: | NP_005009 Entrez Gene 5133 Human Q15116 |
| Synonyms: | CD279; hPD-1; hPD-I; hSLE1; PD-1; PD1; SLEB2 |
| Protein Families: | Druggable Genome, Transmembrane |
| Protein Pathways: | Cell adhesion molecules (CAMs), T cell receptor signaling pathway |


[View online »](#)

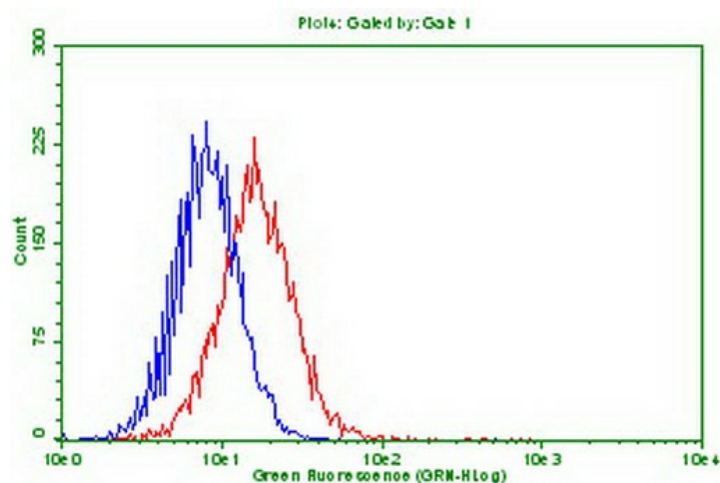
Product images:



Western blot analysis of extracts (35ug) from PBMCs and PHA-stimulated-PBMCs by using anti-PDCD1 monoclonal antibody (1:250).



Immunohistochemical staining of paraffin-embedded Human tonsil using anti-PDCD1 mouse monoclonal antibody. Heat-induced epitope retrieval by EDTA solution buffer pH 8.0 at 120°C for 3 min.



Flow cytometric Analysis of stable expression PD1 cells using anti-PDCD1 antibody ([TA806807]) (Red) compared to a nonspecific negative control antibody (Blue). (1:100) (1:50)