

## Product datasheet for **TA806800AM**

### CCN2 Mouse Monoclonal Antibody (Biotin conjugated) [Clone ID: OTI5C10]

#### Product data:

Product Type:	Primary Antibodies
Clone Name:	OTI5C10
Applications:	WB
Recommended Dilution:	WB 1:500
Reactivity:	Human
Host:	Mouse
Isotype:	IgG2a
Clonality:	Monoclonal
Immunogen:	Human recombinant protein fragment corresponding to amino acids 27-349 of human CTGF(NP_001892) produced in E.coli.
Formulation:	PBS (pH 7.3) containing 1% BSA, 50% glycerol and 0.02% sodium azide.
Concentration:	0.5 mg/ml
Purification:	Purified from mouse ascites fluids or tissue culture supernatant by affinity chromatography (protein A/G)
Conjugation:	Biotin
Storage:	Store at -20°C as received.
Stability:	Stable for 12 months from date of receipt.
Predicted Protein Size:	37.9 kDa
Gene Name:	connective tissue growth factor
Database Link:	<a href="#">NP_001892</a> <a href="#">Entrez Gene 1490 Human</a> <a href="#">P29279</a>
Background:	The protein encoded by this gene is a mitogen that is secreted by vascular endothelial cells. The encoded protein plays a role in chondrocyte proliferation and differentiation, cell adhesion in many cell types, and is related to platelet-derived growth factor. Certain polymorphisms in this gene have been linked with a higher incidence of systemic sclerosis. [provided by RefSeq, Nov 2009]

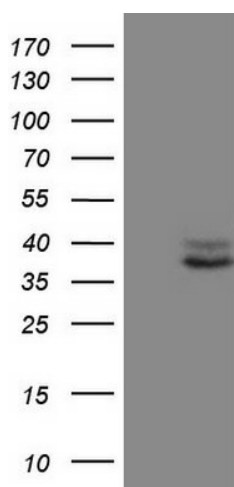


[View online »](#)

Synonyms: CCN2; HCS24; IGFBP8; NOV2

Protein Families: Druggable Genome, Secreted Protein

### Product images:



HEK293T cells were transfected with the pCMV6-ENTRY control (Left lane) or pCMV6-ENTRY CTGF ([RC210336], Right lane) cDNA for 48 hrs and lysed. Equivalent amounts of cell lysates (5 ug per lane) were separated by SDS-PAGE and immunoblotted with anti-CTGF. Positive lysates [LY419668] (100ug) and [LC419668] (20ug) can be purchased separately from OriGene.