

Product datasheet for **TA806789S**

Dishevelled 2 (DVL2) Mouse Monoclonal Antibody [Clone ID: OTI7C7]

Product data:

Product Type:	Primary Antibodies
Clone Name:	OTI7C7
Applications:	IHC, WB
Recommended Dilution:	WB 1:2000, IHC 1:250
Reactivity:	Human, Mouse, Rat
Host:	Mouse
Isotype:	IgG1
Clonality:	Monoclonal
Immunogen:	Human recombinant protein fragment corresponding to amino acids 1-320 of human DVL2(NP_004413) produced in E.coli.
Formulation:	PBS (pH 7.3) containing 1% BSA, 50% glycerol and 0.02% sodium azide.
Concentration:	1 mg/ml
Purification:	Purified from mouse ascites fluids or tissue culture supernatant by affinity chromatography (protein A/G)
Conjugation:	Unconjugated
Storage:	Store at -20°C as received.
Stability:	Stable for 12 months from date of receipt.
Predicted Protein Size:	78.8 kDa
Gene Name:	dishevelled segment polarity protein 2
Database Link:	NP_004413 Entrez Gene 13543 Mouse Entrez Gene 1856 Human O14641
Background:	This gene encodes a member of the dishevelled (dsh) protein family. The vertebrate dsh proteins have approximately 40% amino acid sequence similarity with Drosophila dsh. This gene encodes a 90-kD protein that undergoes posttranslational phosphorylation to form a 95-kD cytoplasmic protein, which may play a role in the signal transduction pathway mediated by multiple Wnt proteins. The mechanisms of dishevelled function in Wnt signaling are likely to be conserved among metazoans. [provided by RefSeq, Jul 2008]



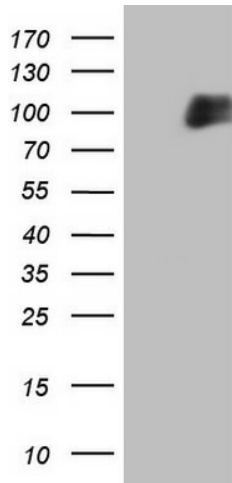
[View online »](#)

Synonyms: dishevelled; dishevelled 2; dishevelled 2 (homologous to Drosophila dsh); DSH homolog 2; dsh homolog 2 (Drosophila); segment polarity protein dishevelled homolog DVL-2

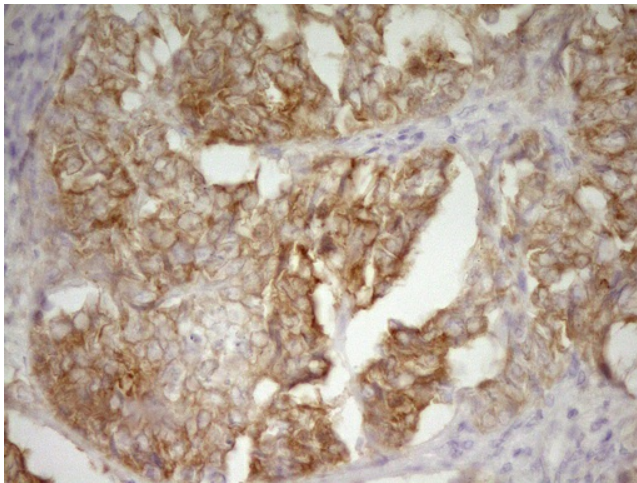
Protein Families: Druggable Genome, ES Cell Differentiation/IPS

Protein Pathways: Basal cell carcinoma, Colorectal cancer, Melanogenesis, Notch signaling pathway, Pathways in cancer, Wnt signaling pathway

Product images:



HEK293T cells were transfected with the pCMV6-ENTRY control (Left lane) or pCMV6-ENTRY DVL2 ([RC202233], Right lane) cDNA for 48 hrs and lysed. Equivalent amounts of cell lysates (5 ug per lane) were separated by SDS-PAGE and immunoblotted with anti-DVL2. Positive lysates [LY401405] (100ug) and [LC401405] (20ug) can be purchased separately from OriGene.



Immunohistochemical staining of paraffin-embedded Adenocarcinoma of Human endometrium tissue using anti-DVL2 mouse monoclonal antibody. (Heat-induced epitope retrieval by 1mM EDTA in 10mM Tris, pH8.5, 120°C for 3min, [TA806789])