

## Product datasheet for **TA806782**

### PHGDH Mouse Monoclonal Antibody [Clone ID: OTI4A1]

#### Product data:

Product Type:	Primary Antibodies
Clone Name:	OTI4A1
Applications:	WB
Recommended Dilution:	WB 1:2000
Reactivity:	Human, Mouse, Rat
Host:	Mouse
Isotype:	IgG2b
Clonality:	Monoclonal
Immunogen:	Full length human recombinant protein of human PHGDH (NP_006614) produced in HEK293T cell.
Formulation:	PBS (pH 7.3) containing 1% BSA, 50% glycerol and 0.02% sodium azide.
Concentration:	1 mg/ml
Purification:	Purified from mouse ascites fluids or tissue culture supernatant by affinity chromatography (protein A/G)
Conjugation:	Unconjugated
Storage:	Store at -20°C as received.
Stability:	Stable for 12 months from date of receipt.
Gene Name:	phosphoglycerate dehydrogenase
Database Link:	<a href="#">NP_006614</a> <a href="#">Entrez Gene 58835 Rat</a> <a href="#">Entrez Gene 236539 Mouse</a> <a href="#">Entrez Gene 26227 Human</a> <a href="#">O43175</a>
Background:	This gene encodes the enzyme which is involved in the early steps of L-serine synthesis in animal cells. L-serine is required for D-serine and other amino acid synthesis. The enzyme requires NAD/NADH as a cofactor and forms homotetramers for activity. Mutations in this gene have been found in a family with congenital microcephaly, psychomotor retardation and other symptoms. Multiple alternatively spliced transcript variants have been found, however the full-length nature of most are not known. [provided by RefSeq, Aug 2011]
Synonyms:	3-PGDH; 3PGDH; HEL-S-113; NLS; NLS1; PDG; PGAD; PGD; PGDH; PHGDHD; SERA

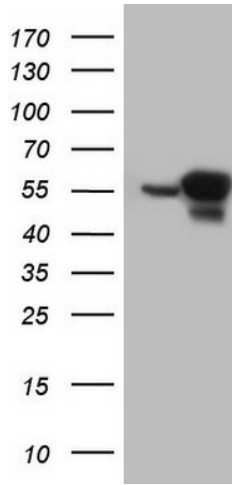


[View online »](#)

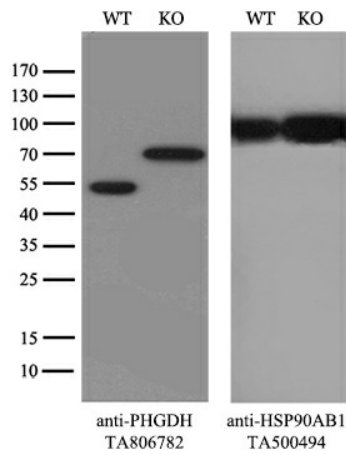
**Protein Families:** Druggable Genome, Stem cell - Pluripotency

**Protein Pathways:** Glycine, serine and threonine metabolism, Metabolic pathways

**Product images:**



HEK293T cells were transfected with the pCMV6-ENTRY control (Left lane) or pCMV6-ENTRY PHGDH ([RC203949], Right lane) cDNA for 48 hrs and lysed. Equivalent amounts of cell lysates (5 ug per lane) were separated by SDS-PAGE and immunoblotted with anti-PHGDH. Positive lysates [LY401983] (100ug) and [LC401983] (20ug) can be purchased separately from OriGene.



Equivalent amounts of cell lysates (10 ug per lane) of wild-type HeLa cells (WT, Cat# LC810HELA) and PHGDH-Knockout HeLa cells (KO, Cat# [LC810345]) were separated by SDS-PAGE and immunoblotted with anti-PHGDH monoclonal antibody TA806782, (1:500). Then the blotted membrane was stripped and reprobed with anti-HSP90AB1 antibody ([TA500494]) as a loading control.