

## Product datasheet for **TA806766BM**

### **VEGF Receptor 1 (FLT1) Mouse Monoclonal Antibody (HRP conjugated) [Clone ID: OTI8G6]**

#### **Product data:**

Product Type:	Primary Antibodies
Clone Name:	OTI8G6
Applications:	WB
Recommended Dilution:	WB 1:2000
Reactivity:	Human
Host:	Mouse
Isotype:	IgG1
Clonality:	Monoclonal
Immunogen:	Human recombinant protein fragment corresponding to amino acids 781-1338 of human FLT1 (NP_002010) produced in HEK293T cell.
Formulation:	PBS (pH 7.3) containing 1% BSA, 50% glycerol.
Concentration:	0.5 mg/ml
Purification:	Purified from mouse ascites fluids or tissue culture supernatant by affinity chromatography (protein A/G)
Conjugation:	HRP
Storage:	Store at -20°C as received.
Stability:	Stable for 12 months from date of receipt.
Gene Name:	fms related tyrosine kinase 1
Database Link:	<a href="#">NP_002010</a> <a href="#">Entrez Gene 2321 Human</a> <a href="#">P17948</a>



[View online »](#)

**Background:**

This gene encodes a member of the vascular endothelial growth factor receptor (VEGFR) family. VEGFR family members are receptor tyrosine kinases (RTKs) which contain an extracellular ligand-binding region with seven immunoglobulin (Ig)-like domains, a transmembrane segment, and a tyrosine kinase (TK) domain within the cytoplasmic domain. This protein binds to VEGFR-A, VEGFR-B and placental growth factor and plays an important role in angiogenesis and vasculogenesis. Expression of this receptor is found in vascular endothelial cells, placental trophoblast cells and peripheral blood monocytes. Multiple transcript variants encoding different isoforms have been found for this gene. Isoforms include a full-length transmembrane receptor isoform and shortened, soluble isoforms. The soluble isoforms are associated with the onset of pre-eclampsia. [provided by RefSeq, May 2009]

**Synonyms:**

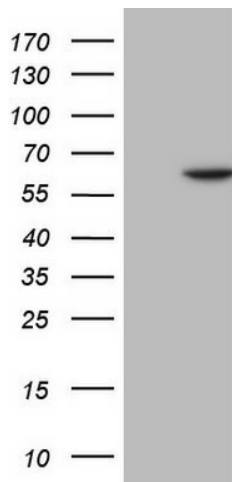
FLT; FLT-1; VEGFR-1; VEGFR1

**Protein Families:**

Druggable Genome, Protein Kinase, Secreted Protein

**Protein Pathways:**

Cytokine-cytokine receptor interaction, Endocytosis, Focal adhesion

**Product images:**

HEK293T cells were transfected with the pCMV6-ENTRY control (Left lane) or pCMV6-ENTRY FLT1 ([RC224406], Right lane) cDNA for 48 hrs and lysed. Equivalent amounts of cell lysates (5 ug per lane) were separated by SDS-PAGE and immunoblotted with anti-FLT1.