

## Product datasheet for **TA806725S**

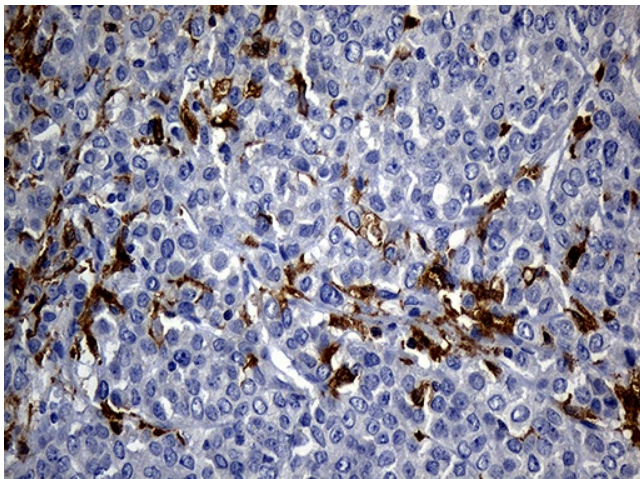
### UBE3B Mouse Monoclonal Antibody [Clone ID: OTI3F10]

#### Product data:

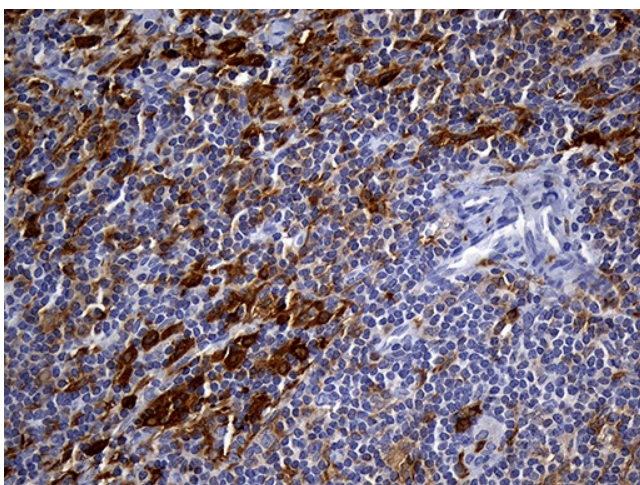
Product Type:	Primary Antibodies
Clone Name:	OTI3F10
Applications:	IHC
Recommended Dilution:	IHC 1:250
Reactivity:	Human, Mouse, Rat
Host:	Mouse
Isotype:	IgG2a
Clonality:	Monoclonal
Immunogen:	Human recombinant protein fragment corresponding to amino acids 768-1068 of human UBE3B (NP_569733) produced in E.coli.
Formulation:	PBS (pH 7.3) containing 1% BSA, 50% glycerol and 0.02% sodium azide.
Concentration:	1 mg/ml
Purification:	Purified from mouse ascites fluids or tissue culture supernatant by affinity chromatography (protein A/G)
Conjugation:	Unconjugated
Storage:	Store at -20°C as received.
Stability:	Stable for 12 months from date of receipt.
Predicted Protein Size:	122.9 kDa
Gene Name:	ubiquitin protein ligase E3B
Database Link:	<a href="#">NP_569733</a> <a href="#">Entrez Gene 89910 Human</a> <a href="#">Q7Z3V4</a>
Synonyms:	BPIDS
Protein Families:	Druggable Genome
Protein Pathways:	Ubiquitin mediated proteolysis



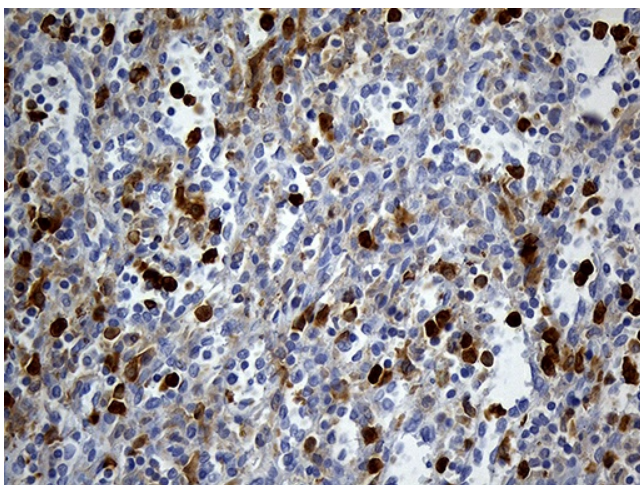
[View online »](#)

**Product images:**

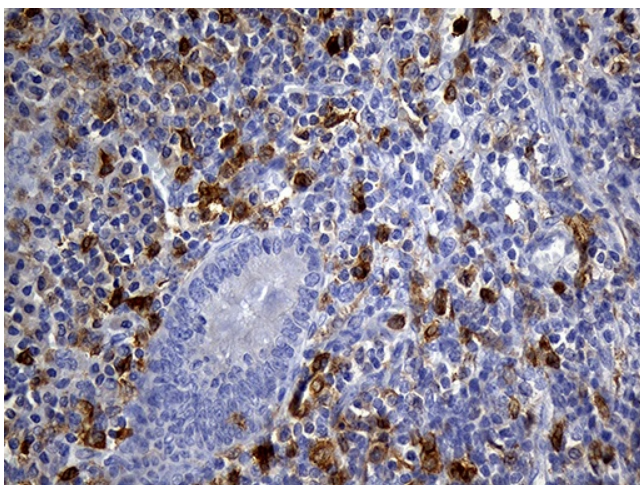
Immunohistochemical staining of paraffin-embedded Adenocarcinoma of Human breast tissue using anti-UBE3B mouse monoclonal antibody. (Heat-induced epitope retrieval by 1mM EDTA in 10mM Tris buffer (pH8.5) at 120°C for 3min, [TA806725]) (1:250)



Immunohistochemical staining of paraffin-embedded Carcinoma of Human thyroid tissue using anti-UBE3B mouse monoclonal antibody. (Heat-induced epitope retrieval by 1mM EDTA in 10mM Tris buffer (pH8.5) at 120°C for 3min, [TA806725]) (1:250)



Immunohistochemical staining of paraffin-embedded Human spleen tissue within the normal limits using anti-UBE3B mouse monoclonal antibody. (Heat-induced epitope retrieval by 1mM EDTA in 10mM Tris buffer (pH8.5) at 120°C for 3min, [TA806725]) (1:250)



Immunohistochemical staining of paraffin-embedded Human appendix tissue within the normal limits using anti-UBE3B mouse monoclonal antibody. (Heat-induced epitope retrieval by 1mM EDTA in 10mM Tris buffer (pH8.5) at 120°C for 3min, [TA806725]) (1:250)