

Product datasheet for **TA806649S**

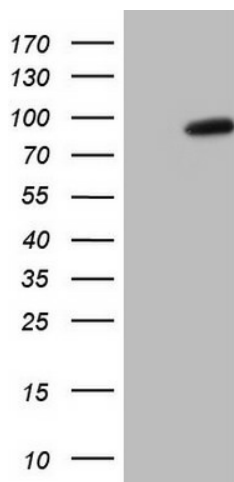
SMURF 2 (SMURF2) Mouse Monoclonal Antibody [Clone ID: OTI6E12]

Product data:

Product Type:	Primary Antibodies
Clone Name:	OTI6E12
Applications:	WB
Recommended Dilution:	WB 1:2000
Reactivity:	Human, Mouse, Rat
Host:	Mouse
Isotype:	IgG1
Clonality:	Monoclonal
Immunogen:	Human recombinant protein fragment corresponding to amino acids 151-440 of human SMURF2(NP_073576) produced in E.coli.
Formulation:	PBS (pH 7.3) containing 1% BSA, 50% glycerol and 0.02% sodium azide.
Concentration:	1 mg/ml
Purification:	Purified from mouse ascites fluids or tissue culture supernatant by affinity chromatography (protein A/G)
Conjugation:	Unconjugated
Storage:	Store at -20°C as received.
Stability:	Stable for 12 months from date of receipt.
Predicted Protein Size:	86 kDa
Gene Name:	SMAD specific E3 ubiquitin protein ligase 2
Database Link:	NP_073576 Entrez Gene 66313 Mouse Entrez Gene 303614 Rat Entrez Gene 64750 Human Q9HAU4
Synonyms:	DKFZp686F0270; MGC138150
Protein Families:	Adult stem cells, Druggable Genome, ES Cell Differentiation/IPS, Transcription Factors
Protein Pathways:	Allograft rejection, Antigen processing and presentation, Autoimmune thyroid disease, Cell adhesion molecules (CAMs), Endocytosis, Graft-versus-host disease, TGF-beta signaling pathway, Type I diabetes mellitus, Ubiquitin mediated proteolysis, Viral myocarditis



[View online »](#)

Product images:

HEK293T cells were transfected with the pCMV6-ENTRY control (Left lane) or pCMV6-ENTRY SMURF2 ([RC210866], Right lane) cDNA for 48 hrs and lysed. Equivalent amounts of cell lysates (5 ug per lane) were separated by SDS-PAGE and immunoblotted with anti-SMURF2. Positive lysates [LY402939] (100ug) and [LC402939] (20ug) can be purchased separately from OriGene.