

Product datasheet for **TA806626AM**

Desmuslin (SYNM) Mouse Monoclonal Antibody (Biotin conjugated) [Clone ID: OTI2F4]

Product data:

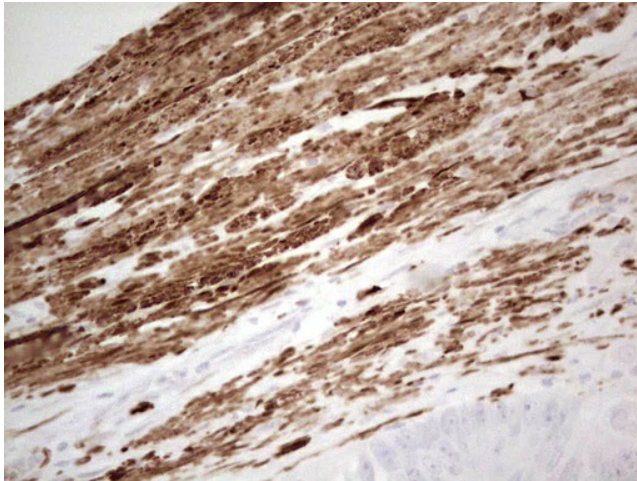
Product Type:	Primary Antibodies
Clone Name:	OTI2F4
Applications:	IHC
Recommended Dilution:	IHC 1:150
Reactivity:	Human
Host:	Mouse
Isotype:	IgG1
Clonality:	Monoclonal
Immunogen:	Human recombinant protein fragment corresponding to amino acids 329-580 of human SYNM(NP_663780) produced in E.coli.
Formulation:	PBS (pH 7.3) containing 1% BSA, 50% glycerol and 0.02% sodium azide.
Concentration:	0.5 mg/ml
Purification:	Purified from mouse ascites fluids or tissue culture supernatant by affinity chromatography (protein A/G)
Conjugation:	Biotin
Storage:	Store at -20°C as received.
Stability:	Stable for 12 months from date of receipt.
Predicted Protein Size:	172.7 kDa
Gene Name:	synemin
Database Link:	NP_663780 Entrez Gene 23336 Human O15061
Background:	The protein encoded by this gene is an intermediate filament (IF) family member. IF proteins are cytoskeletal proteins that confer resistance to mechanical stress and are encoded by a dispersed multigene family. This protein has been found to form a linkage between desmin, which is a subunit of the IF network, and the extracellular matrix, and provides an important structural support in muscle. Two alternatively spliced variants encoding different isoforms have been described for this gene. [provided by RefSeq, Jul 2008]



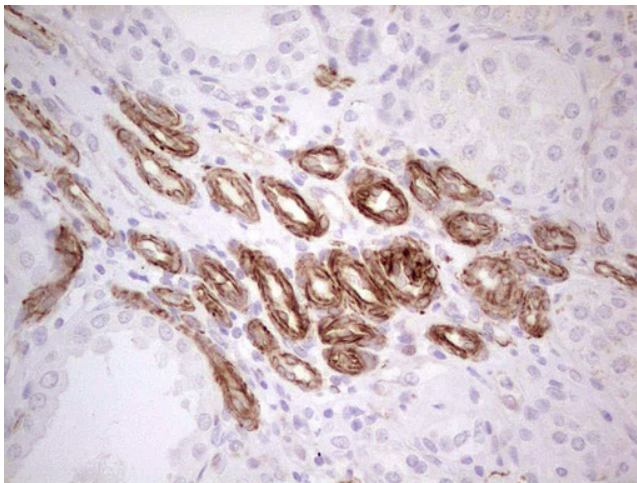
[View online »](#)

Synonyms: DMN; SYN

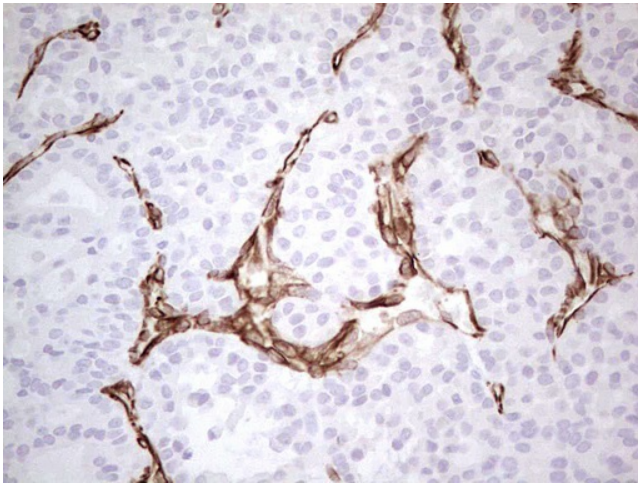
Product images:



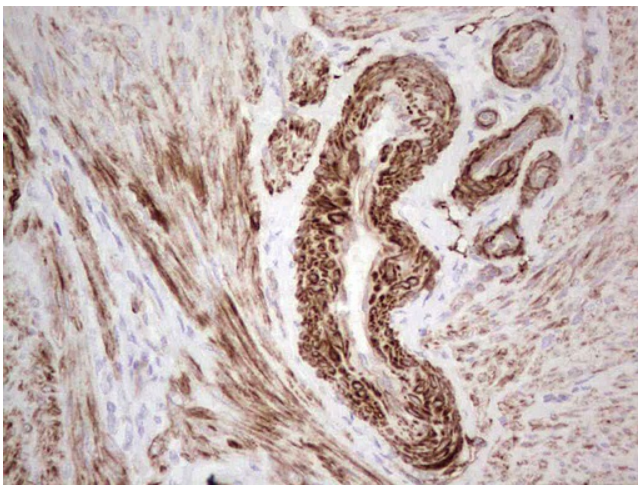
Immunohistochemical staining of paraffin-embedded Adenocarcinoma of Human colon tissue using anti-SYNM mouse monoclonal antibody. (Heat-induced epitope retrieval by 1mM EDTA in 10mM Tris, pH8.5, 120°C for 3min, [TA806626])



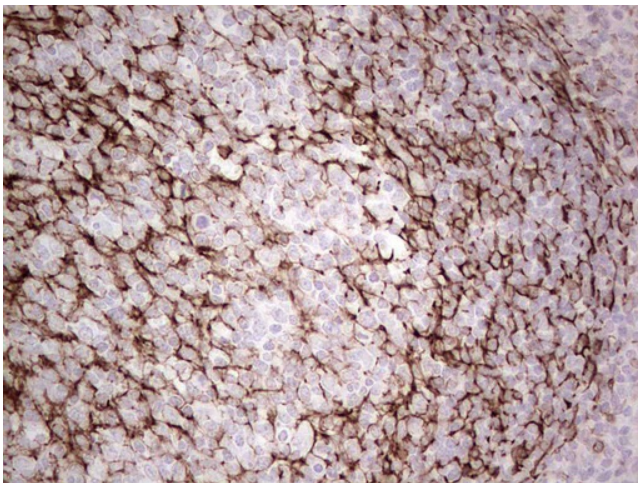
Immunohistochemical staining of paraffin-embedded Human Kidney tissue within the normal limits using anti-SYNM mouse monoclonal antibody. (Heat-induced epitope retrieval by 1mM EDTA in 10mM Tris, pH8.5, 120°C for 3min, [TA806626])



Immunohistochemical staining of paraffin-embedded Carcinoma of Human thyroid tissue using anti-SYNM mouse monoclonal antibody. (Heat-induced epitope retrieval by 1mM EDTA in 10mM Tris, pH8.5, 120°C for 3min, [TA806626])



Immunohistochemical staining of paraffin-embedded Human endometrium tissue within the normal limits using anti-SYNM mouse monoclonal antibody. (Heat-induced epitope retrieval by 1mM EDTA in 10mM Tris, pH8.5, 120°C for 3min, [TA806626])



Immunohistochemical staining of paraffin-embedded Human tonsil within the normal limits using anti-SYNM mouse monoclonal antibody. (Heat-induced epitope retrieval by 1mM EDTA in 10mM Tris, pH8.5, 120°C for 3min, [TA806626])