

Product datasheet for **TA806622BM**

BCL2 Mouse Monoclonal Antibody (HRP conjugated) [Clone ID: OTI5H4]

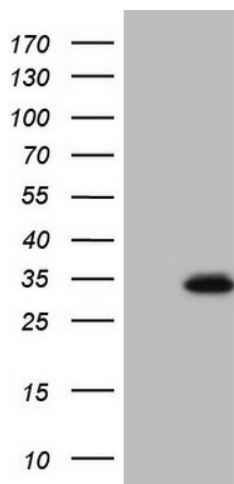
Product data:

Product Type:	Primary Antibodies
Clone Name:	OTI5H4
Applications:	IHC, WB
Recommended Dilution:	WB 1:2000
Reactivity:	Human, Mouse, Rat
Host:	Mouse
Isotype:	IgG2b
Clonality:	Monoclonal
Immunogen:	Full length human recombinant protein of human BCL2 (NP_000624) produced in HEK293T cell.
Formulation:	PBS (pH 7.3) containing 1% BSA, 50% glycerol.
Concentration:	0.5 mg/ml
Purification:	Purified from mouse ascites fluids or tissue culture supernatant by affinity chromatography (protein A/G)
Conjugation:	HRP
Storage:	Store at -20°C as received.
Stability:	Stable for 12 months from date of receipt.
Gene Name:	B-cell CLL/lymphoma 2
Database Link:	NP_000624 Entrez Gene 12043 Mouse Entrez Gene 24224 Rat Entrez Gene 596 Human P10415
Synonyms:	Bcl-2; PPP1R50
Protein Families:	Druggable Genome, ES Cell Differentiation/IPS, Stem cell - Pluripotency, Transmembrane
Protein Pathways:	Amyotrophic lateral sclerosis (ALS), Apoptosis, Colorectal cancer, Focal adhesion, Neurotrophin signaling pathway, Pathways in cancer, Prostate cancer, Small cell lung cancer

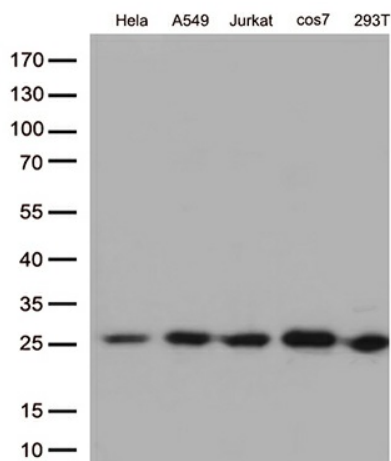


[View online »](#)

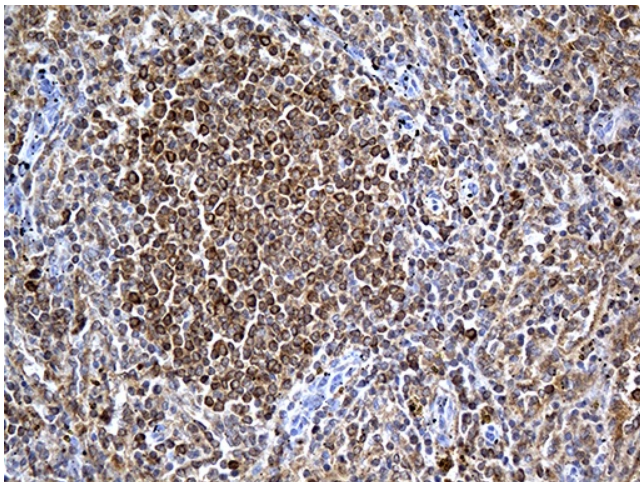
Product images:



HEK293T cells were transfected with the pCMV6-ENTRY control (Left lane) or pCMV6-ENTRY BCL2 ([RC204498], Right lane) cDNA for 48 hrs and lysed. Equivalent amounts of cell lysates (5 ug per lane) were separated by SDS-PAGE and immunoblotted with anti-BCL2 (1:2000).



Western blot analysis of extracts (35ug) from 5 cell lines lysates by using anti-BCL2 monoclonal antibody (1:500).



Immunohistochemical staining of paraffin-embedded Human spleen tissue within the normal limits using anti-BCL2 mouse monoclonal antibody. (Heat-induced epitope retrieval by 1mM EDTA in 10mM Tris buffer (pH8.5) at 120°C for 3min, [TA806622]) (1:500)