

Product datasheet for **TA806613BM**

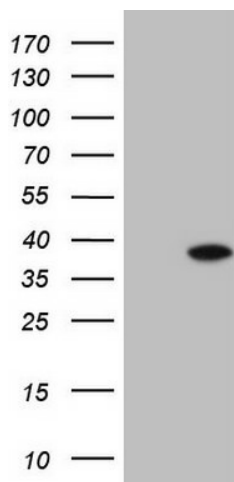
SCP3 (SYCP3) Mouse Monoclonal Antibody (HRP conjugated) [Clone ID: OTI1B11]

Product data:

| | |
|-------------------------|---|
| Product Type: | Primary Antibodies |
| Clone Name: | OTI1B11 |
| Applications: | WB |
| Recommended Dilution: | WB 1:2000 |
| Reactivity: | Human |
| Host: | Mouse |
| Isotype: | IgG1 |
| Clonality: | Monoclonal |
| Immunogen: | Full length human recombinant protein of human SYCP3 (NP_710161) produced in E.coli. |
| Formulation: | PBS (pH 7.3) containing 1% BSA, 50% glycerol. |
| Concentration: | 0.5 mg/ml |
| Purification: | Purified from mouse ascites fluids or tissue culture supernatant by affinity chromatography (protein A/G) |
| Conjugation: | HRP |
| Storage: | Store at -20°C as received. |
| Stability: | Stable for 12 months from date of receipt. |
| Predicted Protein Size: | 27.5 kDa |
| Gene Name: | synaptonemal complex protein 3 |
| Database Link: | NP_710161 Entrez Gene 50511 Human Q8IZU3 |
| Background: | This gene encodes an essential structural component of the synaptonemal complex. This complex is involved in synapsis, recombination and segregation of meiotic chromosomes. Mutations in this gene are associated with azoospermia in males and susceptibility to pregnancy loss in females. Alternate splicing results in multiple transcript variants that encode the same protein. [provided by RefSeq, May 2010] |
| Synonyms: | COR1; SCP3; SPGF4 |



[View online »](#)

Product images:

HEK293T cells were transfected with the pCMV6-ENTRY control (Left lane) or pCMV6-ENTRY SYCP3 ([RC209340], Right lane) cDNA for 48 hrs and lysed. Equivalent amounts of cell lysates (5 ug per lane) were separated by SDS-PAGE and immunoblotted with anti-SYCP3. Positive lysates [LY406978] (100ug) and [LC406978] (20ug) can be purchased separately from OriGene.