

## Product datasheet for **TA806594S**

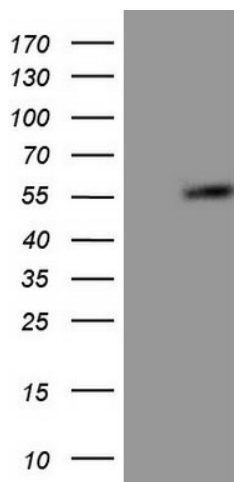
### **GABA A Receptor alpha 5 (GABRA5) Mouse Monoclonal Antibody [Clone ID: OTI1C2]**

#### **Product data:**

<b>Product Type:</b>	Primary Antibodies
<b>Clone Name:</b>	OTI1C2
<b>Applications:</b>	WB
<b>Recommended Dilution:</b>	WB 1:2000
<b>Reactivity:</b>	Human, Mouse, Rat
<b>Host:</b>	Mouse
<b>Isotype:</b>	IgG1
<b>Clonality:</b>	Monoclonal
<b>Immunogen:</b>	Human recombinant protein fragment corresponding to amino acids 32-259 of human GABRA5(NP_000801) produced in E.coli.
<b>Formulation:</b>	PBS (pH 7.3) containing 1% BSA, 50% glycerol and 0.02% sodium azide.
<b>Concentration:</b>	1 mg/ml
<b>Purification:</b>	Purified from mouse ascites fluids or tissue culture supernatant by affinity chromatography (protein A/G)
<b>Conjugation:</b>	Unconjugated
<b>Storage:</b>	Store at -20°C as received.
<b>Stability:</b>	Stable for 12 months from date of receipt.
<b>Gene Name:</b>	gamma-aminobutyric acid type A receptor alpha5 subunit
<b>Database Link:</b>	<a href="#">NP_000801</a> <a href="#">Entrez Gene 29707 Rat</a> <a href="#">Entrez Gene 110886 Mouse</a> <a href="#">Entrez Gene 2558 Human</a> <a href="#">P31644</a>
<b>Synonyms:</b>	MGC138184
<b>Protein Families:</b>	Druggable Genome, Ion Channels: Cys-loop Receptors, Transmembrane
<b>Protein Pathways:</b>	Neuroactive ligand-receptor interaction



[View online »](#)

**Product images:**

HEK293T cells were transfected with the pCMV6-ENTRY control (Left lane) or pCMV6-ENTRY GABRA5 ([RC216541], Right lane) cDNA for 48 hrs and lysed. Equivalent amounts of cell lysates (5 ug per lane) were separated by SDS-PAGE and immunoblotted with anti-GABRA5. Positive lysates [LY400284] (100ug) and [LC400284] (20ug) can be purchased separately from OriGene.