

Product datasheet for **TA806590BM**

BCL2 Mouse Monoclonal Antibody (HRP conjugated) [Clone ID: OTI5H8]

Product data:

Product Type:	Primary Antibodies
Clone Name:	OTI5H8
Applications:	WB
Recommended Dilution:	WB 1:2000
Reactivity:	Human, Mouse, Rat
Host:	Mouse
Isotype:	IgG2a
Clonality:	Monoclonal
Immunogen:	Full length human recombinant protein of human BCL2 (NP_000624) produced in HEK293T cell.
Formulation:	PBS (pH 7.3) containing 1% BSA, 50% glycerol.
Concentration:	0.5 mg/ml
Purification:	Purified from mouse ascites fluids or tissue culture supernatant by affinity chromatography (protein A/G)
Conjugation:	HRP
Storage:	Store at -20°C as received.
Stability:	Stable for 12 months from date of receipt.
Predicted Protein Size:	26.1 kDa
Gene Name:	B-cell CLL/lymphoma 2
Database Link:	NP_000624 Entrez Gene 12043 Mouse Entrez Gene 24224 Rat Entrez Gene 596 Human P10415
Background:	This gene encodes an integral outer mitochondrial membrane protein that blocks the apoptotic death of some cells such as lymphocytes. Constitutive expression of BCL2, such as in the case of translocation of BCL2 to Ig heavy chain locus, is thought to be the cause of follicular lymphoma. Two transcript variants, produced by alternate splicing, differ in their C-terminal ends. [provided by RefSeq, Jul 2008]



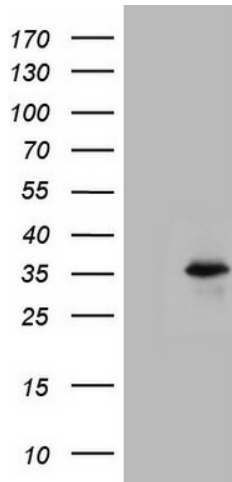
[View online »](#)

Synonyms: Bcl-2; PPP1R50

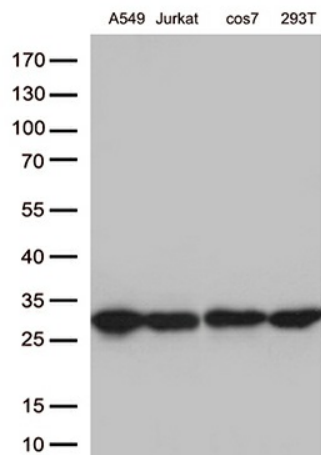
Protein Families: Druggable Genome, ES Cell Differentiation/IPS, Stem cell - Pluripotency, Transmembrane

Protein Pathways: Amyotrophic lateral sclerosis (ALS), Apoptosis, Colorectal cancer, Focal adhesion, Neurotrophin signaling pathway, Pathways in cancer, Prostate cancer, Small cell lung cancer

Product images:



HEK293T cells were transfected with the pCMV6-ENTRY control (Left lane) or pCMV6-ENTRY BCL2 ([RC204498], Right lane) cDNA for 48 hrs and lysed. Equivalent amounts of cell lysates (5 ug per lane) were separated by SDS-PAGE and immunoblotted with anti-BCL2 (1:2000). Positive lysates [LY424602] (100ug) and [LC424602] (20ug) can be purchased separately from OriGene.



Western blot analysis of extracts (35ug) from 4 cell lines lysates by using anti-BCL2 monoclonal antibody (1:500).