

Product datasheet for **TA806586M**

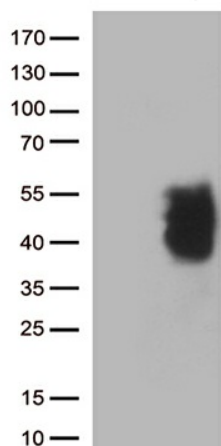
PD L2 (PDCD1LG2) Mouse Monoclonal Antibody [Clone ID: OTI1C9]

Product data:

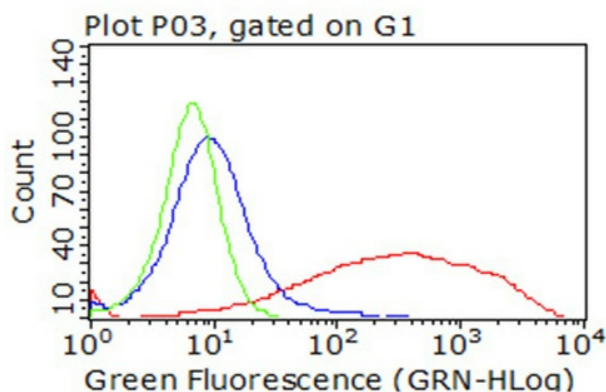
| | |
|-------------------------|---|
| Product Type: | Primary Antibodies |
| Clone Name: | OTI1C9 |
| Applications: | FC, WB |
| Recommended Dilution: | WB 1:2000 |
| Reactivity: | Human |
| Host: | Mouse |
| Isotype: | IgG1 |
| Clonality: | Monoclonal |
| Immunogen: | Full length human recombinant protein of human PDCD1LG2 (NP_079515) produced in HEK293T cell. |
| Formulation: | PBS (pH 7.3) containing 1% BSA, 50% glycerol and 0.02% sodium azide. |
| Concentration: | 1 mg/ml |
| Purification: | Purified from mouse ascites fluids or tissue culture supernatant by affinity chromatography (protein A/G) |
| Conjugation: | Unconjugated |
| Storage: | Store at -20°C as received. |
| Stability: | Stable for 12 months from date of receipt. |
| Predicted Protein Size: | 30.8 kDa |
| Gene Name: | programmed cell death 1 ligand 2 |
| Database Link: | NP_079515 Entrez Gene 80380 Human Q9BQ51 |
| Synonyms: | B7DC; bA574F11.2; Btdc; CD273; PD-L2; PDCD1L2; PDL2 |
| Protein Families: | Transmembrane |
| Protein Pathways: | Cell adhesion molecules (CAMs) |


[View online »](#)

Product images:



HEK293T cells were transfected with the pCMV6-ENTRY control (Left lane) or pCMV6-ENTRY PDL2 ([RC224141], Right lane) cDNA for 48 hrs and lysed. Equivalent amounts of cell lysates (5 ug per lane) were separated by SDS-PAGE and immunoblotted with anti-PDL2 (1:1k)



Flow cytometric analysis of living 293T cells transfected with PDL2 overexpression plasmid ([RC224141], Red)/empty vector ([PS100001], Blue) using anti-PDL2 antibody ([TA806586]). Cells incubated with a non-specific antibody (Green) were used as isotype control (1:100).